

## GLOBAL AND REGIONAL CASES

### HIGHLIGHTS

- From April 2012 to date, 2610 laboratory-confirmed cases of Middle East respiratory syndrome (MERS) were reported globally, with 940 associated deaths at a case-fatality ratio (CFR) of 36%. The majority of these cases were reported from Saudi Arabia, with 2201 cases and 859 related deaths (CFR: 39%).
- During the month of March 2024, no new cases were reported.
- The demographic and epidemiological characteristics of reported cases do not show any significant differences when compared with the same corresponding period between 2016 and 2024.
- Among primary cases, 50–59 year-olds are at the highest risk for acquiring infection and among secondary cases the 30–39 year-olds are at the highest risk. Among both primary and secondary cases, CFR is higher within the age group of 70–79 years-old.

\*Disclaimer: Data are subject to change over time due to lag in reporting.

### SUMMARY

**0**  
Newly reported cases

**12**  
Countries reported cases since April 2012 in the Eastern Mediterranean Region

**2610**  
Laboratory-confirmed cases reported since April 2012

**27**  
Countries reported cases globally

**940**  
Deaths reported since April 2012

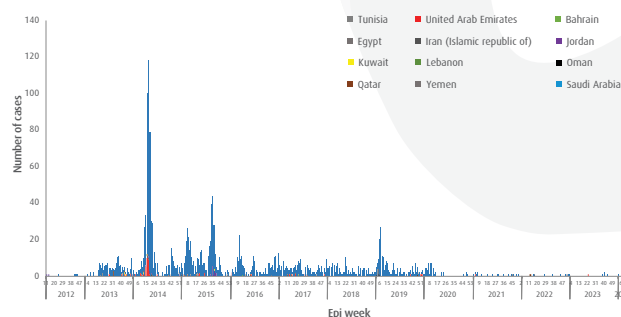
**Table 1. Number of MERS cases in the Eastern Mediterranean Region by month and outcome in 2024**

2024	Survived	Died
January	0	1
February	0	0
March	0	0
<b>Total</b>	<b>0</b>	<b>1</b>

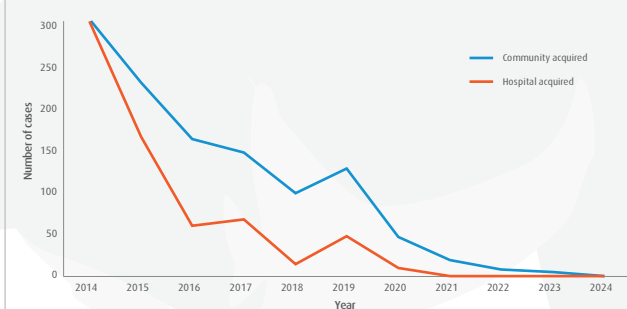
**Table 2. Epidemiological characteristics of MERS cases reported globally between October 2018 – March 2019 and October 2023 – March 2024**

Characteristic	Oct 18 - Mar 19	Oct 19 - Mar 20	Oct 20 - Mar 21	Oct 21 - Mar 22	Oct 22 - Mar 23	Oct 23 - Mar 24
Number	147	96	14	8	4	2
Median age in years	51	55	52	55	72	49
Gender (% male)	78	79	79	100	100	100
% of Primary Cases	52	80	86	100	75	100
% of Secondary cases	48	20	14	0	0	0
(%) of Unknown Contact History	0	0	0	0	25	0
% of HCW	14	10	15	0	0	0
% Fatal	24	28	43	50	50	100

**Fig. 1. Distribution of MERS reported cases from Eastern Mediterranean Region by week of onset, June 2012 – March 2024**

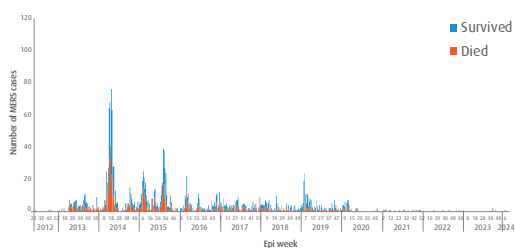


**Fig. 2. Community versus hospital acquired MERS cases in Eastern Mediterranean Region, January 2014 – March 2024**

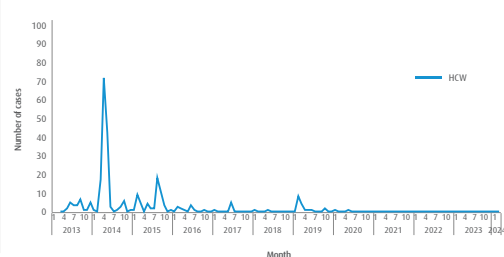


## KSA CASES

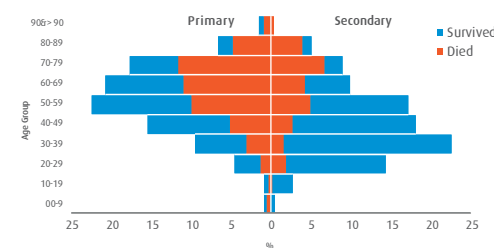
**Fig. 3. MERS cases per week of onset in Saudi Arabia, June 2012 – March 2024**



**Fig. 4. Cases of MERS in healthcare workers reported from Saudi Arabia, January 2013 – March 2024**



**Fig. 5. Age and fatality distribution of primary and secondary cases of MERS reported from Saudi Arabia, June 2012 – March 2024**



**Table 3. Characteristics of MERS cases reported from Saudi Arabia, June 2012 – March 2024**

Type of case	2012	2013	2014	2015	2016	2017	2018	2019	2020	2021	2022	2023	2024	Grand Total
Primary	4	71	292	234	163	148	102	128	49	18	5	5	1	1220
Secondary	1	91	371	219	85	88	39	77	10	0	0	0	0	981
Unknown	0	0	0	0	0	0	0	0	0	0	0	0	0	0
<b>Grand Total</b>	<b>5</b>	<b>162</b>	<b>663</b>	<b>453</b>	<b>248</b>	<b>236</b>	<b>141</b>	<b>205</b>	<b>59</b>	<b>18</b>	<b>5</b>	<b>5</b>	<b>1</b>	<b>2201</b>