

GLOBAL AND REGIONAL CASES

HIGHLIGHTS

- From April 2012 to date, 2610 laboratory-confirmed cases of Middle East respiratory syndrome (MERS) were reported globally, with 940 associated deaths at a case-fatality ratio (CFR) of 36%. The majority of these cases were reported from Saudi Arabia, with 2201 cases and 859 related deaths (CFR: 39%).
- During the month of February 2024, one new case was reported retrospectively for January.
- The demographic and epidemiological characteristics of reported cases do not show any significant differences when compared with the same corresponding period between 2016 and 2024.
- Among primary cases, 50–59 year-olds are at the highest risk for acquiring infection and among secondary cases the 30–39 year-olds are at the highest risk. Among both primary and secondary cases, CFR is higher within the age group of 70–79 years-old.

*Disclaimer: Data are subject to change over time due to lag in reporting.

SUMMARY

1
Newly reported case

12
Countries reported cases since April 2012 in the Eastern Mediterranean Region

2610
Laboratory-confirmed cases reported since April 2012

27
Countries reported cases globally

940
Deaths reported since April 2012

Table 1. Number of MERS cases in the Eastern Mediterranean Region by month and outcome in 2024

2024	Survived	Died
January	0	1
February	0	0
Total	0	1

Table 2. Epidemiological characteristics of MERS cases reported globally between September 2018 – February 2019 and September 2023 – February 2024

Characteristic	Sep 18 - Feb 19	Sep 19 - Feb 20	Sep 20 - Feb 21	Sep 21 - Feb 22	Sep 22 - Feb 23	Sep 23 - Feb 24
Number	121	89	12	7	4	5
Median age in years	50	55	50	58	72	66
Gender (% male)	81	81	83	100	100	60
% of Primary Cases	50	78	83	100	75	100
% of Secondary cases	50	22	17	0	0	0
(%) of Unknown Contact History	0	0	0	0	25	0
% of HCW	12	10	18	0	0	0
% Fatal	24	28	42	43	50	60

Fig. 1. Distribution of MERS reported cases from Eastern Mediterranean Region by week of onset, June 2012 – February 2024

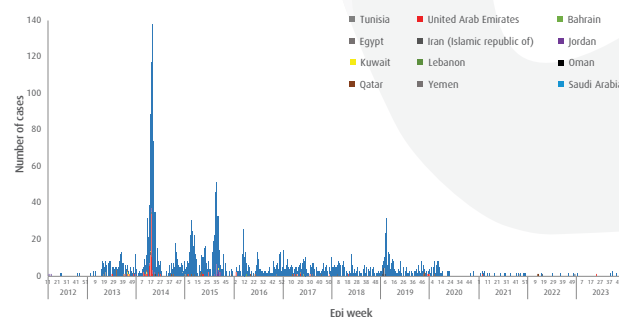
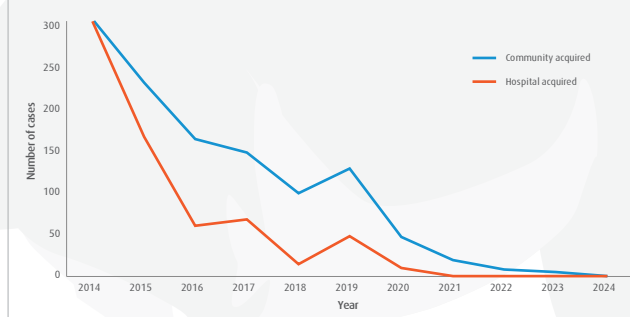


Fig. 2. Community versus hospital acquired MERS cases in Eastern Mediterranean Region, January 2014 – February 2024



KSA CASES

Fig. 3. MERS cases per week of onset in Saudi Arabia, June 2012 – February 2024

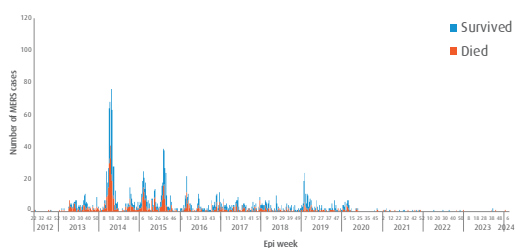


Fig. 4. Cases of MERS in healthcare workers reported from Saudi Arabia, January 2013 – February 2024

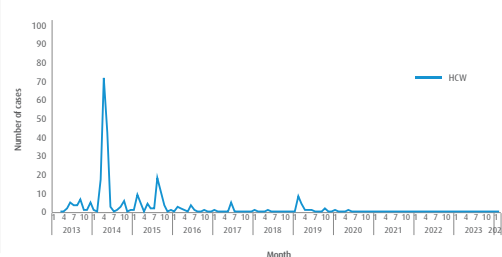


Fig. 5. Age and fatality distribution of primary and secondary cases of MERS reported from Saudi Arabia, June 2012 – February 2024

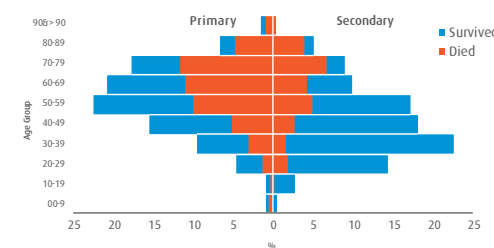


Table 3. Characteristics of MERS cases reported from Saudi Arabia, June 2012 – February 2024

Type of case	2012	2013	2014	2015	2016	2017	2018	2019	2020	2021	2022	2023	2024	Grand Total
Primary	4	71	292	234	163	148	102	128	49	18	5	5	1	1220
Secondary	1	91	371	219	85	88	39	77	10	0	0	0	0	981
Unknown	0	0	0	0	0	0	0	0	0	0	0	0	0	0
Grand Total	5	162	663	453	248	236	141	205	59	18	5	5	1	2201