

# COVID-19 MONTHLY UPDATE | DECEMBER 2022

## Highlights

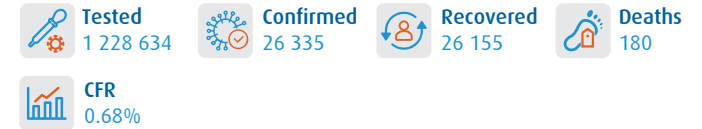
- In December 2022, a total of 26 335 COVID-19 cases were reported from the 22 countries of the Eastern Mediterranean Region (EMR). There was a 35% decrease in overall reported cases as compared to the previous month when it was 40 505. The highest number of cases was reported from Qatar followed by Morocco and United Arab Emirates.
- During December 2022, a total of 180 related deaths were reported from the Region with Kingdom of Saudi Arabia reporting the highest number of deaths followed by Iraq and Tunisia. There was a 13% decrease in reported deaths compared to the previous month when it was 206.
- Most of the 22 countries in the Region reported a decrease in COVID-19 cases and deaths during December as compared to November.
- Since the start of the pandemic, a total of 23 223 032 confirmed COVID-19 cases including 349 091 related deaths at a case-fatality ratio (CFR) of 1.5% were reported from the 22 countries of the Region.
- 21 countries have reported one or more new variants of concern (VOC) in the Region: Alpha in 21 countries, Beta in 18 countries, Gamma in 6 countries, Delta in 18 countries and Omicron in 15 countries.
- Vaccination continues across the Region. The total number of doses administered so far in the 22 countries is 844 957 683.

## COVID-19 cases and deaths by EMR countries, 29 January 2020 to 31 December 2022

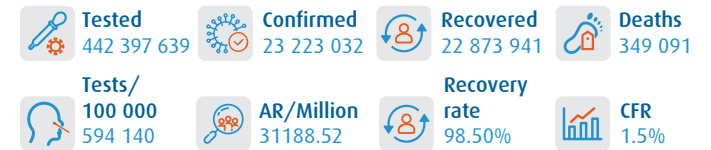
Countries	December		Cumulative figures			Trend*
	New cases	New deaths	Cases	Deaths	CFR%	
Afghanistan	1513	15	207 585	7849	3.8	↓
Bahrain	282	0	696 614	1536	0.2	↓
Djibouti			15 690	189	1	-
Egypt	91	4	515 533	24 802	4.8	↑
Islamic Republic of Iran	1434	52	7 561 140	144 685	1.9	↓
Iraq	1878	11	2 465 545	25 375	1.0	↓
Jordan			1 746 997	14 122	0.8	-
Kuwait			662 747	2570	0	-
Lebanon	2248	10	1 222 808	10 747	0.9	↑
Libya	58	0	507 142	6437	1	↑
Morocco	2772	10	1 271 595	16 294	1.3	↓
Occupied Palestinian territory	159	0	703 228	5708	0.8	↑
Oman			399 154	4628	1.2	-
Pakistan	580	4	1 575 805	30 636	1.9	↓
Qatar	10 580	0	489 428	685	0.1	↑
Saudi Arabia	1407	54	827 004	9518	1.2	↓
Somalia	24	0	27 310	1361	5	↓
Sudan	47	3	63 686	4994	7.8	↓
Syrian Arab Republic	24	0	57 423	3163	5.5	↓
Tunisia	573	17	1 147 645	29 285	2.6	↑
United Arab Emirates	2665	0	1 047 008	2348	0.2	↓
Yemen			11 945	2159	18.1	-
<b>Total</b>	<b>26 335</b>	<b>180</b>	<b>23 223 032</b>	<b>349 091</b>	<b>1.5</b>	<b>↓</b>

\*trend refers to % changes in the cases compared to previous month

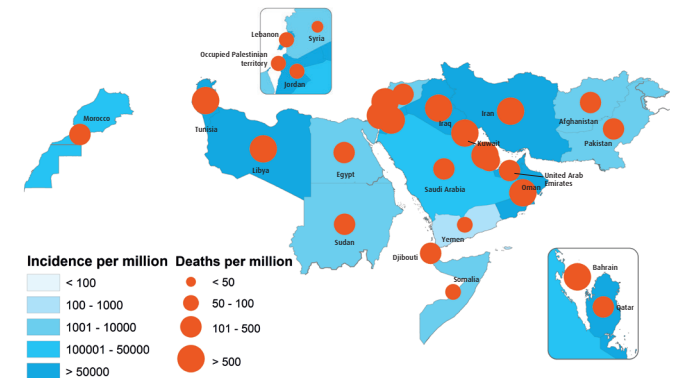
## Key figures, December 2022



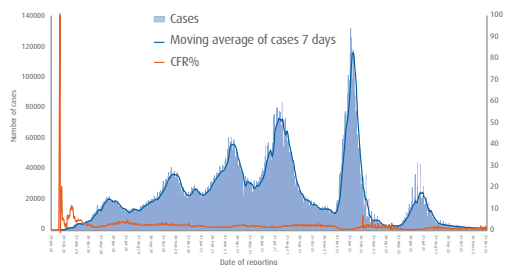
## Cumulative key figures, 29 January 2020 to 31 December 2022



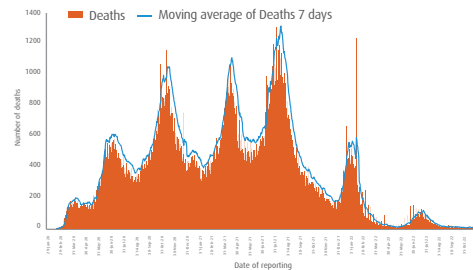
## COVID-19 cases and deaths per million population in EMR, 29 January 2020 to 31 December 2022



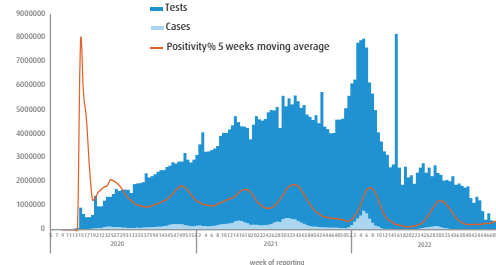
## Distribution of daily cases and CFR% in EMR, 29 January 2020 to 31 December 2022



## Distribution of daily deaths in EMR, 29 January 2020 to 31 December 2022



## Distribution of weekly COVID-19 tested in EMR, 29 January 2020 to December 2022



## Distribution of COVID-19 cases by age and gender in EMR, 29 January 2020 to December 2022

