

# COVID-19 MONTHLY UPDATE | NOVEMBER 2022

## Highlights

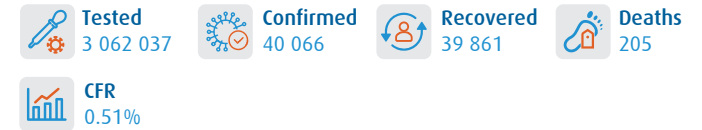
- In November 2022, a total of 40 066 COVID-19 cases were reported from the 22 countries of the Eastern Mediterranean Region (EMR). There was a decrease of 42% in overall reported cases as compared to the previous month when it was 68 769. The highest number of cases was reported from Qatar followed by United Arab Emirates and Bahrain.
- During November 2022, a total of 205 related deaths were reported from the Region with Islamic Republic of Iran reporting the highest number of deaths followed by Kingdom of Saudi Arabia and Lebanon. There was a 37% decrease in reported deaths compared to the previous month when it was 324.
- Most of the 22 countries in the Region reported a decrease in COVID-19 cases and deaths during November as compared to October.
- Since the start of the pandemic, a total of 23 196 258 confirmed COVID-19 cases including 348 910 related deaths at a case-fatality ratio (CFR) of 1.5% were reported from the 22 countries of the Region.
- 21 countries have reported one or more new variants of concern (VOC) in the Region: Alpha in 21 countries, Beta in 18 countries, Gamma in 6 countries, Delta in 18 countries and Omicron in 15 countries.
- Vaccination continues across the Region. The total number of doses administered so far in the 22 countries is 843 034 964.

## COVID-19 cases and deaths by EMR countries, 29 January 2020 to 30 November 2022

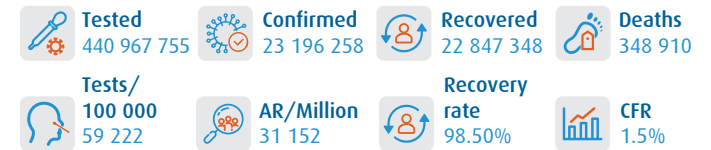
Countries	November		Cumulative figures			Trend*
	New cases	New deaths	Cases	Deaths	CFR%	
Afghanistan	2905	11	206 072	7834	3.8	↓
Bahrain	6145	8	696 332	1536	0.2	↓
Djibouti			15 690	189	1	-
Egypt	36	0	515 442	24 798	4.8	↑
Islamic Republic of Iran	2056	57	7 559 706	144 633	1.9	↓
Iraq	1846	3	2 463 296	25 363	1.0	↑
Jordan			1 746 997	14 122	0.8	-
Kuwait	517	1	662 747	2570	0	↓
Lebanon	1781	29	1 220 560	10 737	0.9	↓
Libya	33	0	507 084	6437	1	↓
Morocco	3222	3	1 268 823	16 284	1.3	↑
Occupied Palestinian territory			703 036	5708	0.8	-
Oman	270	0	399 119	4628	1.2	↓
Pakistan	1131	6	1 575 225	30 632	1.9	↓
Qatar	9581	1	478 848	685	0.1	↓
Saudi Arabia	3138	57	825 597	9464	1.1	↓
Somalia	49	0	27 286	1361	5	↑
Sudan	130	19	63 639	4991	7.8	↓
Syrian Arab Republic	39	0	57 399	3163	5.5	↓
Tunisia	479	9	1 147 072	29 268	2.6	↓
United Arab Emirates	6707	0	1 044 343	2348	0.2	↓
Yemen	1	1	11 945	2159	18.1	↓
<b>Total</b>	<b>40 066</b>	<b>205</b>	<b>23 196 258</b>	<b>348 910</b>	<b>1.5</b>	<b>↓</b>

\*trend refers to % changes in the cases compared to previous month

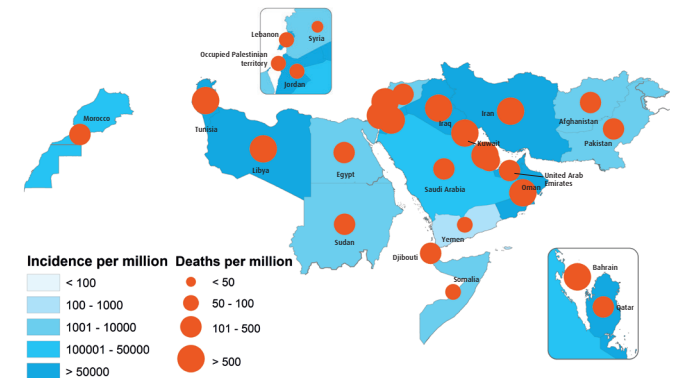
## Key figures, November 2022



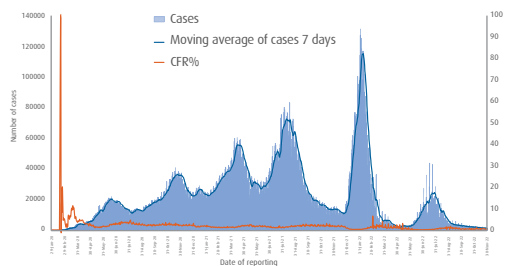
## Cumulative key figures, 29 January 2020 to 30 November 2022



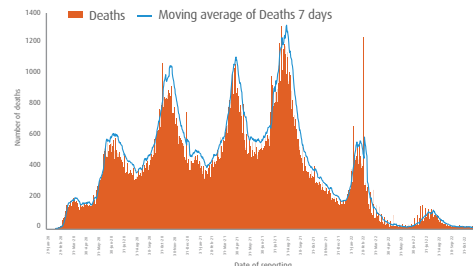
## COVID-19 cases and deaths per million population in EMR, 29 January 2020 to 30 November 2022



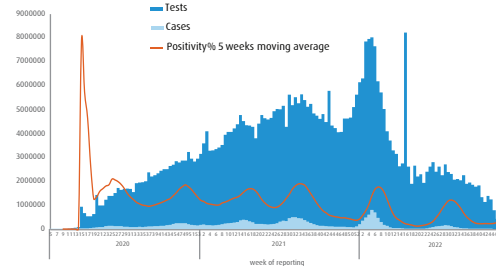
## Distribution of daily cases and CFR% in EMR, 29 January 2020 to 30 November 2022



## Distribution of daily deaths in EMR, 29 January 2020 to 30 November 2022



## Distribution of weekly COVID-19 tested in EMR, 29 January 2020 to November 2022



## Distribution of COVID-19 cases by age and gender in EMR, 29 January 2020 to November 2022

