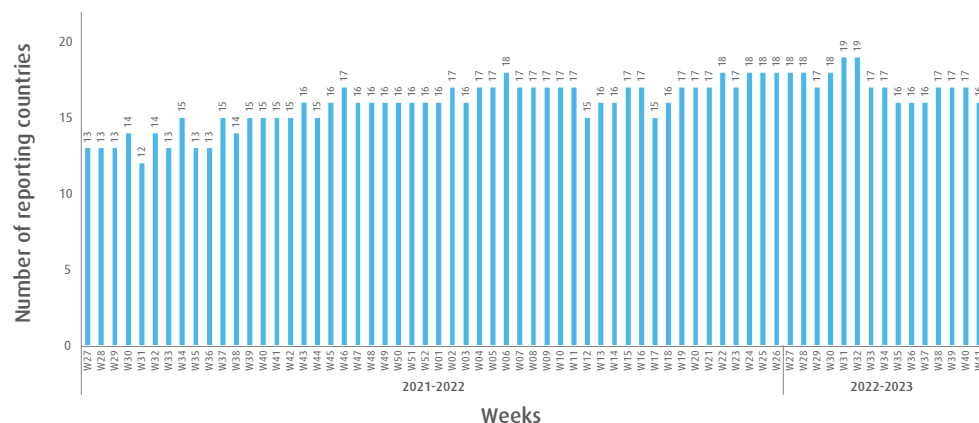


# INFLUENZA SITUATION IN THE EASTERN MEDITERRANEAN REGION

## Week 41, 2022 (9 October–15 October)

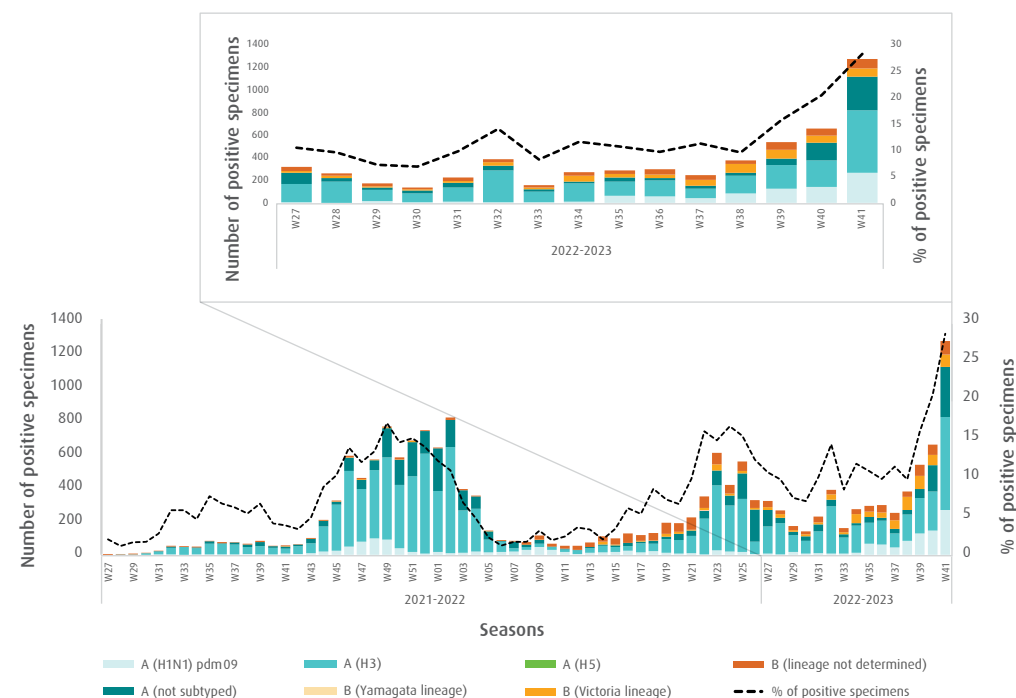
**Fig. 1.** Number of reporting countries to EMFLU/FluNet by week in the Region, week 27, 2021 – week 41, 2022



**Table.** Number of enrolled cases and number of tested specimens by reporting countries in the Region, week 41, 2022

| Country                    | Number of enrolled cases | Number of tested specimens (%) |
|----------------------------|--------------------------|--------------------------------|
| Afghanistan                | 124                      | 2 (2)                          |
| Bahrain                    | 460                      | 460 (100)                      |
| Egypt                      | 86                       | 86 (100)                       |
| Iran (Islamic Republic of) | 1805                     | 1805 (100)                     |
| Iraq                       | 8                        | 8 (100)                        |
| Jordan                     | 84                       | 84 (100)                       |
| Lebanon                    | 8                        | 8 (100)                        |
| Libya                      | 2                        | 2 (100)                        |
| Oman                       | 250                      | 250 (100)                      |
| Pakistan                   | 419                      | 419 (100)                      |
| Qatar                      | 947                      | 947 (100)                      |
| Saudi Arabia               | 484                      | 448 (93)                       |
| Somalia                    | 49                       | 35 (71)                        |
| Tunisia                    | 29                       | 29 (100)                       |
| United Arab Emirates       | 181                      | 181 (100)                      |
| Yemen                      | 2                        | 0 (0)                          |
| <b>Total</b>               | <b>4938</b>              | <b>4764 (96)</b>               |

**Fig. 2.** Number of positive specimens by subtype/lineage and percentage of specimens testing positive for influenza viruses starting from week 27, 2021 till week 41, 2022



**Fig. 3.** Proportion of influenza subtypes/lineages in the Region, week 41, 2022

