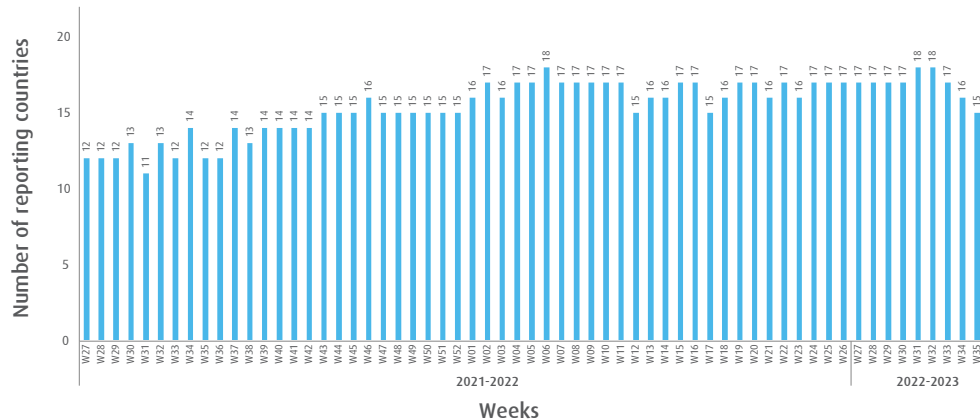


# INFLUENZA SITUATION IN THE EASTERN MEDITERRANEAN REGION

## Week 35, 2022 (28 August–03 September)

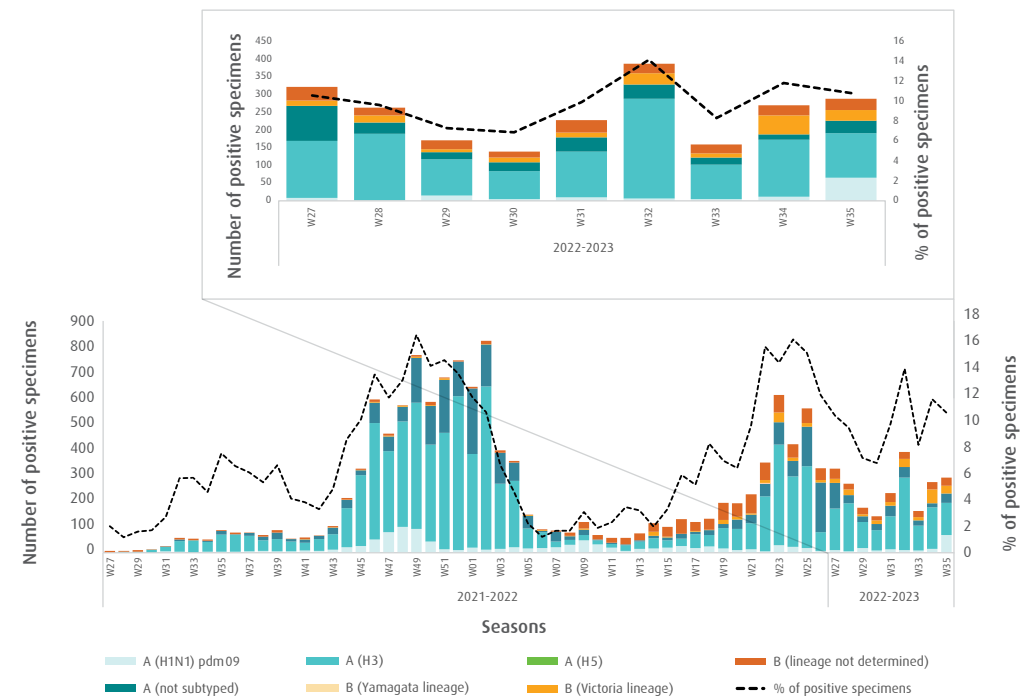
**Fig. 1.** Number of reporting countries to EMFLU/FluNet by week in the Region, week 27, 2021 – week 35, 2022



**Table.** Number of enrolled cases and number of tested specimens by reporting countries in the Region, week 35, 2022

Country	Number of enrolled cases	Number of tested specimens (%)
Afghanistan	40	40 (100)
Bahrain	970	970 (100)
Egypt	298	298 (100)
Iran (Islamic Republic of)	76	76 (100)
Iraq	1	1 (100)
Jordan	156	156 (100)
Lebanon	46	46 (100)
Libya	6	6 (100)
Oman	95	95 (100)
Pakistan	420	420 (100)
Qatar	323	323 (100)
Saudi Arabia	152	144 (95)
Somalia	126	123 (98)
Sudan	15	15 (100)
United Arab Emirates	147	147 (100)
<b>Total</b>	<b>2871</b>	<b>2860 (99.6)</b>

**Fig. 2.** Number of positive specimens by subtype/lineage and percentage of specimens testing positive for influenza viruses starting from week 27, 2021 till week 35, 2022



**Fig. 3.** Proportion of influenza subtypes/lineages in the Region, week 35, 2022

