

COVID-19 MONTHLY UPDATE | JUNE 2022

Highlights

- In June 2022, a total of 241 567 COVID-19 cases were reported from the 22 countries of the Eastern Mediterranean Region (EMR). There was a significant increase in overall reported cases as compared to the previous month when it was 74 888. The highest number of cases was reported from Morocco followed by Bahrain and UAE.
- During May 2022, a total of 340 related deaths were reported from the Region with Islamic Republic of Iran reporting the highest number of deaths followed by Egypt and Tunisia. There was a 67% decrease in reported deaths compared to the previous month when it was 568.
- Most of the 22 countries in the Region reported an increase in COVID-19 cases and deaths during June as compared to May.
- Since the start of the pandemic, a total of 22 020 041 confirmed COVID-19 cases including 343 574 related deaths (CFR 1.6%) were reported from the 22 countries.
- 21 countries have reported one or more new variants of concern (VOC) in the Region: Alpha in 21 countries, Beta in 18 countries, Gamma in 6 countries, Delta in 20 countries and Omicron in 17 countries.
- Vaccination continues across the Region. The total number of doses administered so far in the 22 countries is 735 855 17.

COVID-19 cases and deaths by EMR countries, 29 January 2020 to 30 June 2022

Countries	June		Cumulative figures			Trend*
	New cases	New deaths	Cases	Deaths	CFR%	
Afghanistan	2195	16	182 614	7723	4.2	↑
Bahrain	40 191	4	625 856	1492	0.2	↑
Djibouti	10	0	15 690	189	1	↓
Egypt	144	5	514 088	24 723	4.8	↓
Islamic Republic of Iran	6092	74	7 238 126	141 389	2.0	↓
Iraq	20 508	22	2 348 662	25 241	1.1	↑
Jordan	2260	2	1 699 197	14 068	0.8	↑
Kuwait	10 807	0	644 451	2555	0	↑
Lebanon	12 934	35	1 112 199	10 466	0.9	↑
Libya	122	0	502 138	6430	1	↑
Morocco	48 606	33	1 216 909	16 109	1.3	↑
Occupied Palestinian territory	2148	0	659 853	5660	0.9	↑
Oman	1079	0	390 728	4628	1.2	↑
Pakistan	6026	16	1 536 479	30 395	2.0	↑
Qatar	13 847	2	382 635	679	0.2	↑
Saudi Arabia	27 107	60	795 186	9208	1.2	↑
Somalia	238	0	26 803	1361	5	↑
Sudan	314	10	62 696	4952	7.9	↑
Syrian Arab Republic	34	0	55 927	3150	5.6	↓
Tunisia	9308	50	1 052 180	28 691	2.7	↑
United Arab Emirates	37 595	11	945 800	2316	0.2	↑
Yemen	2	0	11 824	2149	18.2	↓
Total	241 567	340	22 020 041	343 574	1.6	↑

*trend refers to % changes in the cases compared to previous month

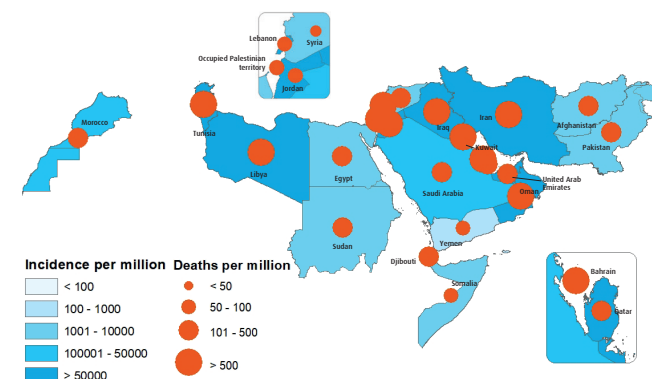
Key figures, June 2022



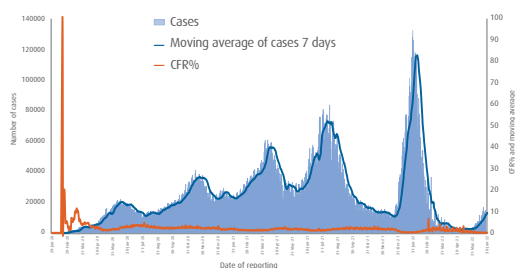
Cumulative key figures, 29 January 2020 to 30 June 2022



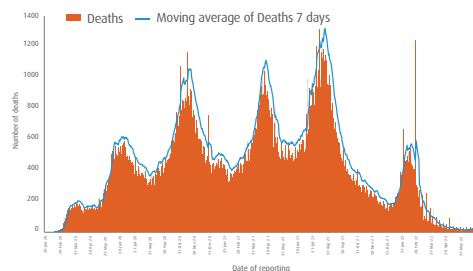
COVID-19 cases and deaths per million population in EMR, 29 January 2020 to 30 June 2022



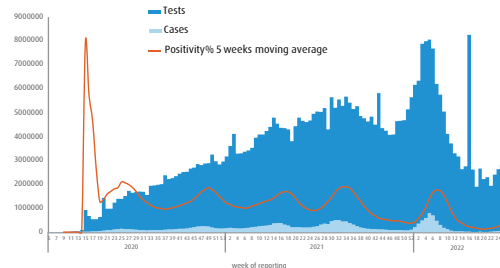
Distribution of daily cases and CFR% in EMR, 29 January 2020 to 30 June 2022



Distribution of daily deaths in EMR, 29 January 2020 to 30 June 2022



Distribution of weekly COVID-19 tested in EMR, 29 January 2020 to 30 June 2022



Distribution of COVID-19 cases by age and gender in EMR, 29 January 2020 to 30 June 2022

