

INFLUENZA SITUATION IN THE EASTERN MEDITERRANEAN REGION

Week 30, 2022 (24 July–30 July)

Fig. 1. Number of reporting countries to EMFLU/FluNet by week in the Region, week 27, 2021 – week 30, 2022

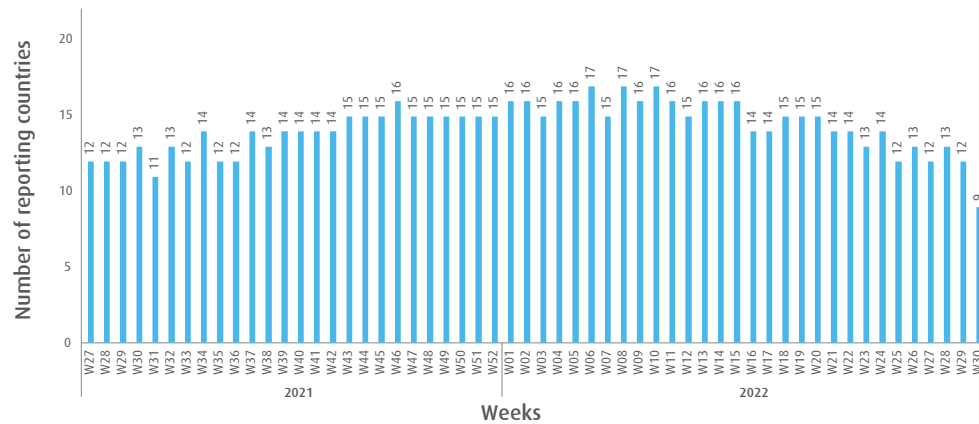


Table. Number of enrolled cases and number of tested specimens by reporting countries in the Region, week 30, 2022

Country	Number of enrolled cases	Number of tested specimens (%)
Afghanistan	40	0 (0)
Egypt	63	63 (100)
Jordan	67	67 (100)
Lebanon	91	91 (100)
Oman	20	20 (100)
Qatar	277	277 (100)
Saudi Arabia	132	106 (80)
Somalia	6	0 (0)
Sudan	6	6 (100)
Total	702	630 (90)

Fig. 2. Number of positive specimens by subtype/lineage and percentage of specimens testing positive for influenza viruses starting from week 27, 2020 till week 30, 2022

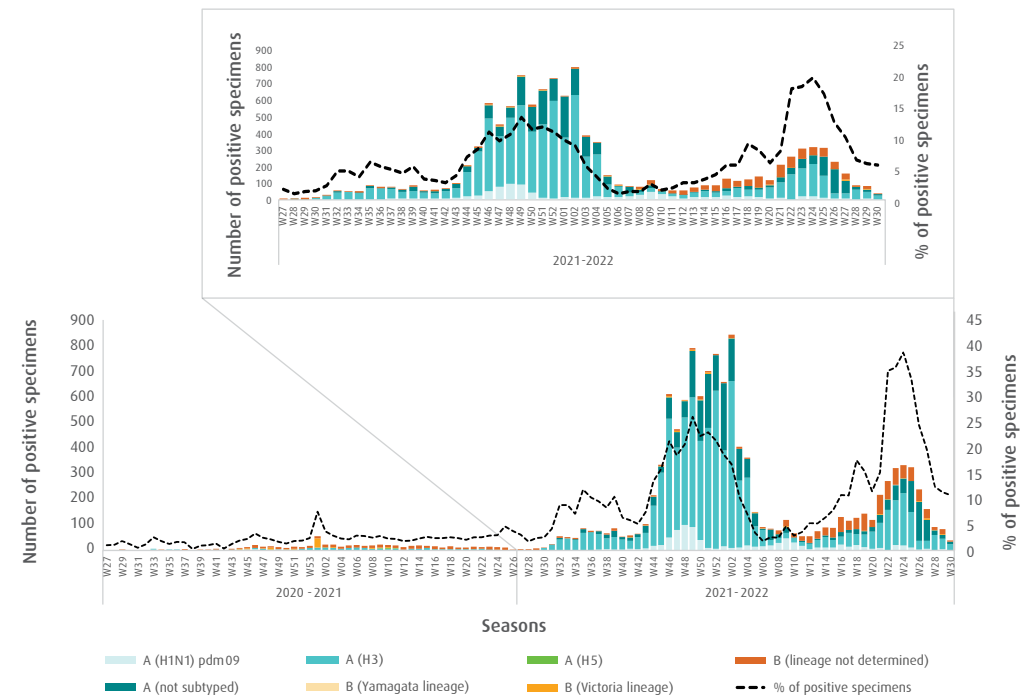


Fig. 3. Proportion of influenza subtypes/lineages in the Region, week 30, 2022

