

INFLUENZA SITUATION IN THE EASTERN MEDITERRANEAN REGION

Week 26, 2022 (26 June–02 July)

Fig. 1. Number of reporting countries to EMFLU/FluNet by week in the Region, week 27, 2021 – week 26, 2022

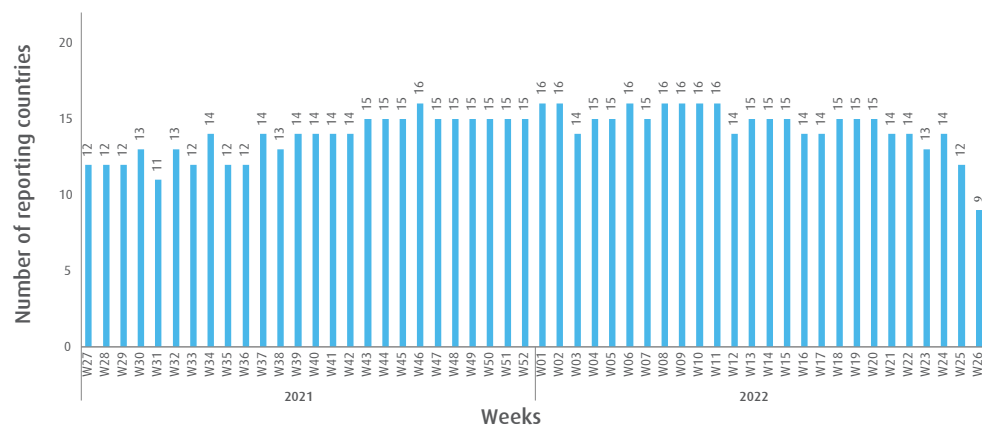


Table. Number of enrolled cases and number of tested specimens by reporting countries in the Region, week 26, 2022

Country	Number of enrolled cases	Number of tested specimens (%)
Afghanistan	45	45 (100)
Egypt	16	16 (100)
Lebanon	11	11 (100)
Libya	6	6 (100)
Oman	50	50 (100)
Qatar	8	8 (100)
Saudi Arabia	310	260 (84)
Somalia	30	7 (23)
United Arab Emirates	55	55 (100)
Total	531	458 (86)

Fig. 2. Number of positive specimens by subtype/lineage and percentage of specimens testing positive for influenza viruses starting from week 27, 2019 till week 26, 2022

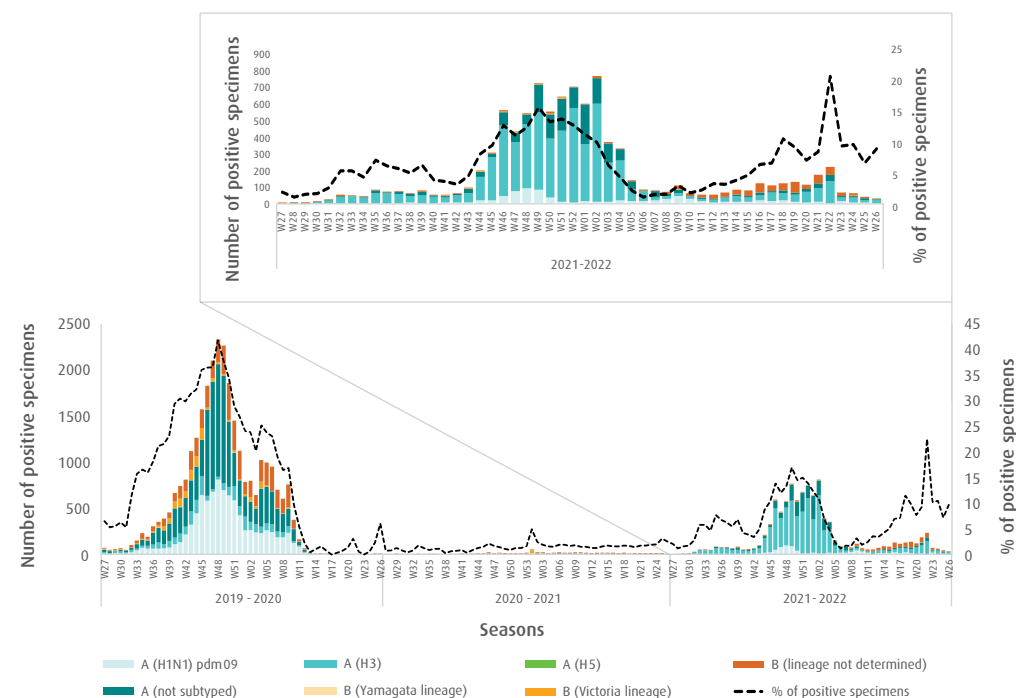


Fig. 3. Proportion of influenza subtypes/lineages in the Region, week 26, 2022

