

INFLUENZA SITUATION IN THE EASTERN MEDITERRANEAN REGION

Week 25, 2022 (19 June–25 June)

Fig. 1. Number of reporting countries to EMFLU/FluNet by week in the Region, week 27, 2021 – week 25, 2022

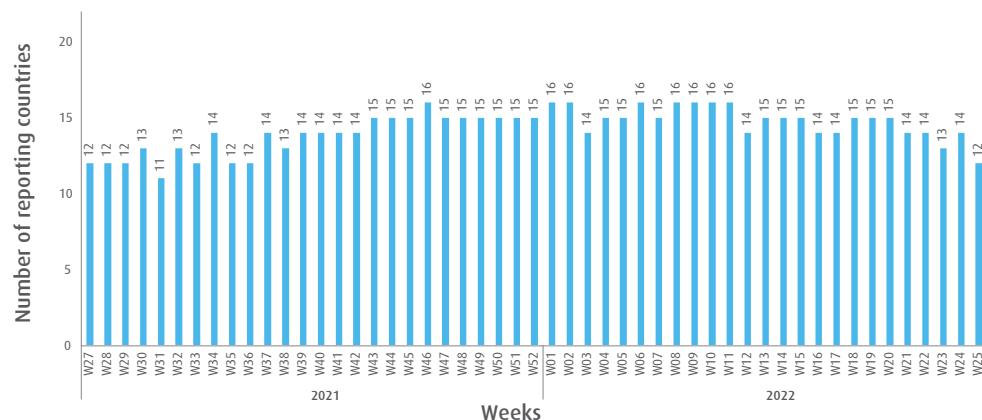


Table. Number of enrolled cases and number of tested specimens by reporting countries in the Region, week 25, 2022

Country	Number of enrolled cases	Number of tested specimens (%)
Afghanistan	41	41 (100)
Egypt	119	119 (100)
Iran (Islamic Republic of)	81	81 (100)
Iraq	144	144 (100)
Jordan	1	1 (100)
Lebanon	4	4 (100)
Libya	10	10 (100)
Oman	87	87 (100)
Qatar	41	41 (100)
Saudi Arabia	284	229 (81)
Somalia	5	3 (60)
Sudan	1	0 (0)
Total	818	760 (93)

Fig. 2. Number of positive specimens by subtype/lineage and percentage of specimens testing positive for influenza viruses starting from week 27, 2019 till week 25, 2022

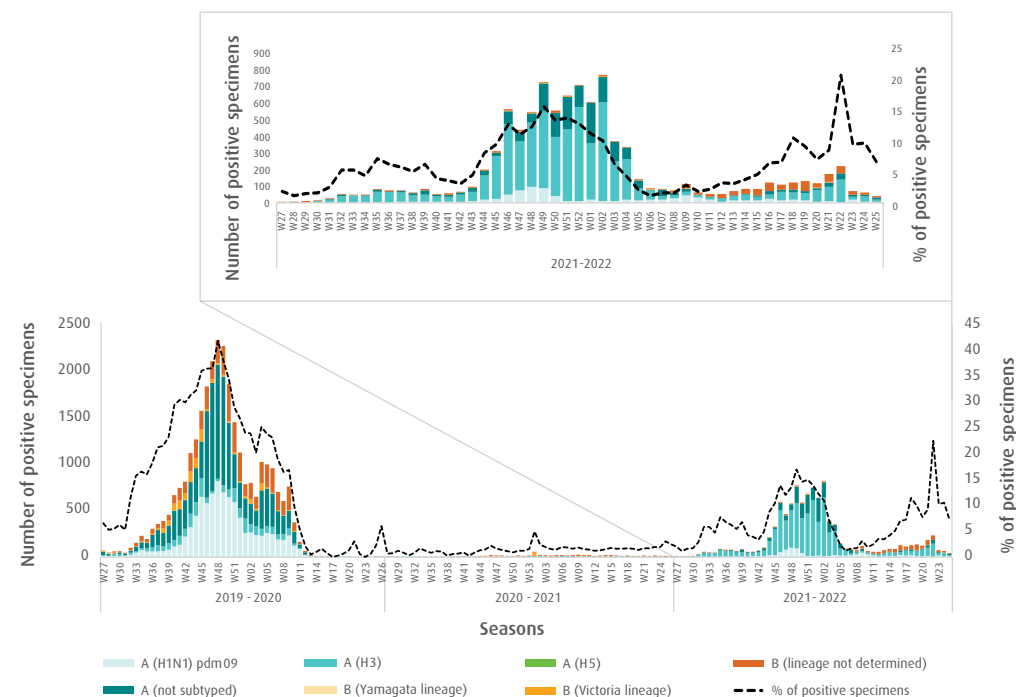


Fig. 3. Proportion of influenza subtypes/lineages in the Region, week 25, 2022

