

INFLUENZA SITUATION IN THE EASTERN MEDITERRANEAN REGION

Week 24, 2022 (12 June–18 June)

Fig. 1. Number of reporting countries to EMFLU/FluNet by week in the Region, week 27, 2021 – week 24, 2022

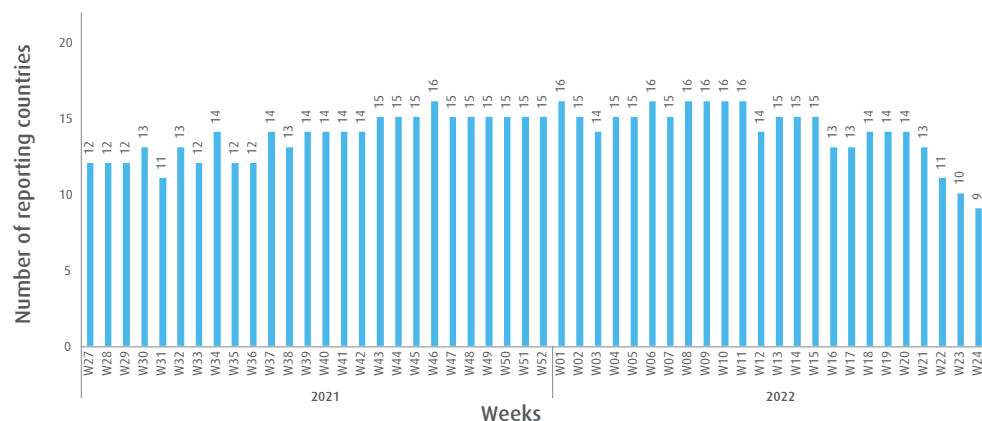


Table. Number of enrolled cases and number of tested specimens by reporting countries in the Region, week 24, 2022

Country	Number of enrolled cases	Number of tested specimens (%)
Afghanistan	68	(0)
Egypt	1	1 (100)
Iraq	61	61 (100)
Lebanon	5	5 (100)
Oman	38	37 (97)
Qatar	13	13 (100)
Saudi Arabia	255	218 (85)
Syrian Arab Republic	1	1 (100)
United Arab Emirates	45	45 (100)
Total	487	381 (78)

Fig. 2. Number of positive specimens by subtype/lineage and percentage of specimens testing positive for influenza viruses starting from week 27, 2019 till week 24, 2022

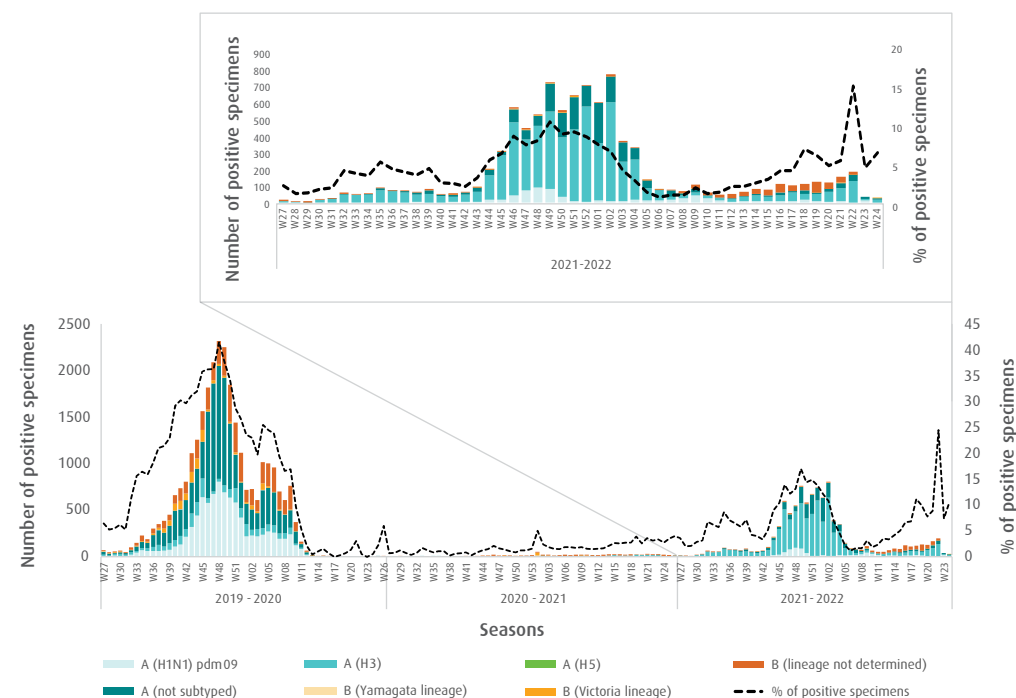


Fig. 3. Proportion of influenza subtypes/lineages in the Region, week 24, 2022

