

INFLUENZA SITUATION IN THE EASTERN MEDITERRANEAN REGION

Week 22, 2022 (29 May–04 June)

Fig. 1. Number of reporting countries to EMFLU/FluNet by week in the Region, week 27, 2021 – week 22, 2022

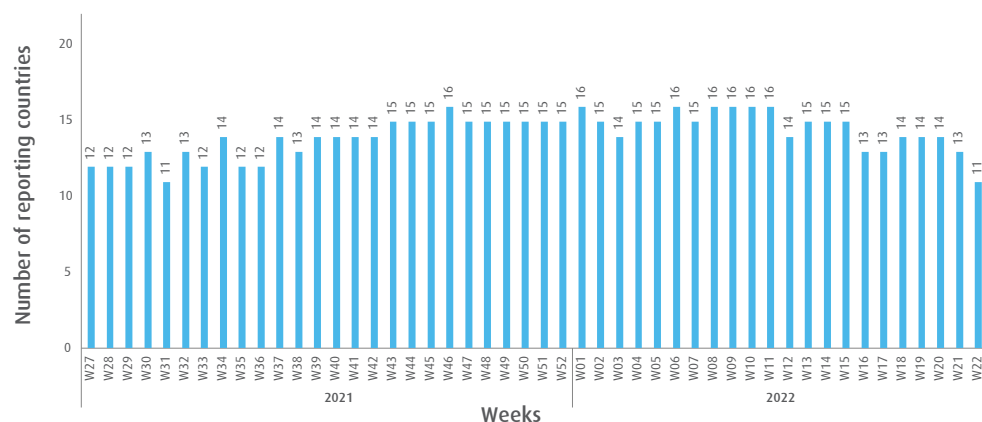


Table. Number of enrolled cases and number of tested specimens by reporting countries in the Region, week 22, 2022

Country	Number of enrolled cases	Number of tested specimens (%)
Afghanistan	62	0
Egypt	57	57 (100)
Iran (Islamic Republic of)	64	64 (100)
Iraq	56	56 (100)
Lebanon	3	3 (100)
Oman	41	41 (100)
Qatar	451	451 (100)
Saudi Arabia	123	93 (76)
Somalia	2	2 (100)
Syrian Arab Republic	22	22 (100)
United Arab Emirates	41	41 (100)
Total	922	830 (90)

Fig. 2. Number of positive specimens by subtype/lineage and percentage of specimens testing positive for influenza viruses starting from week 27, 2019 till week 22, 2022

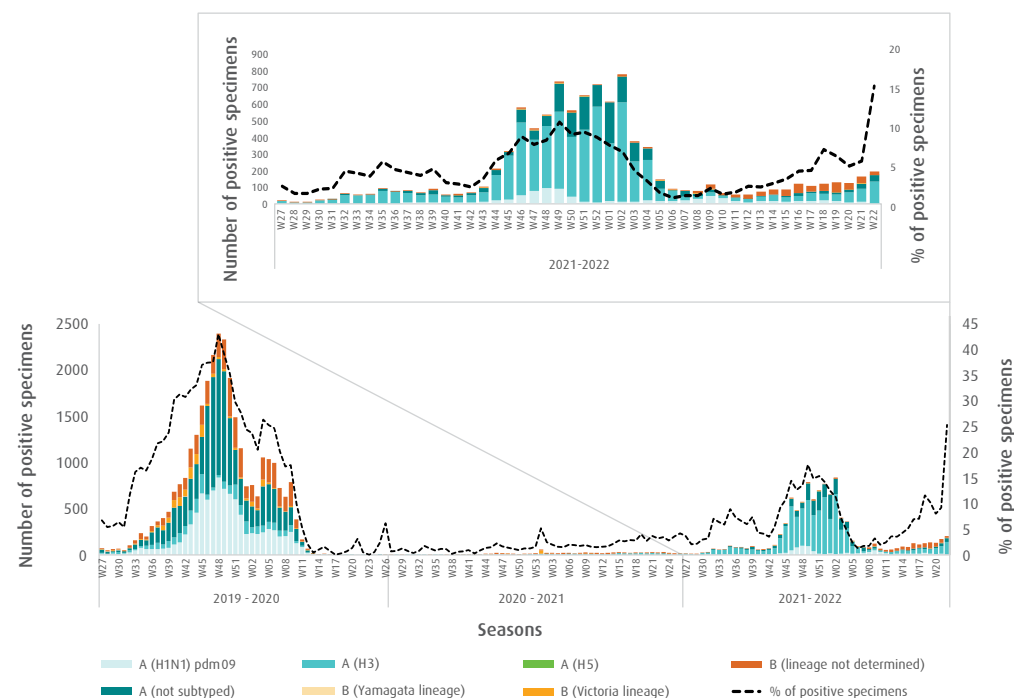


Fig. 3. Proportion of influenza subtypes/lineages in the Region, week 22, 2022

