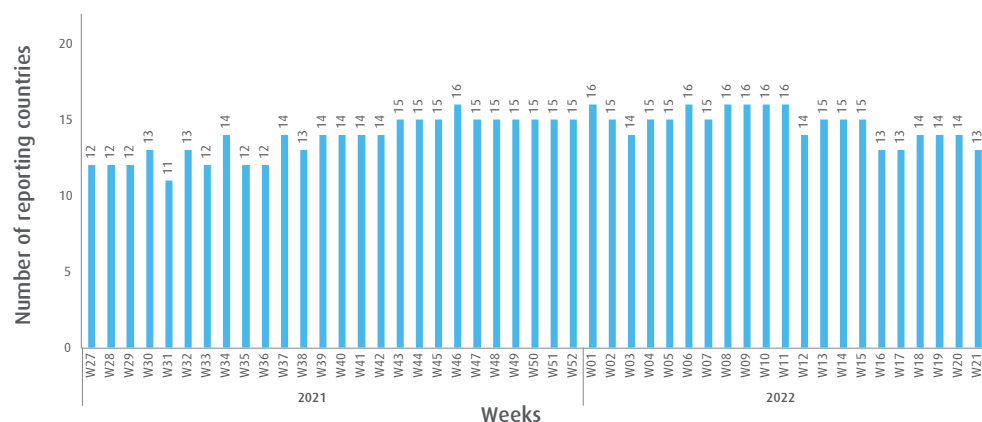


# INFLUENZA SITUATION IN THE EASTERN MEDITERRANEAN REGION

## Week 21, 2022 (22 May–28 May)

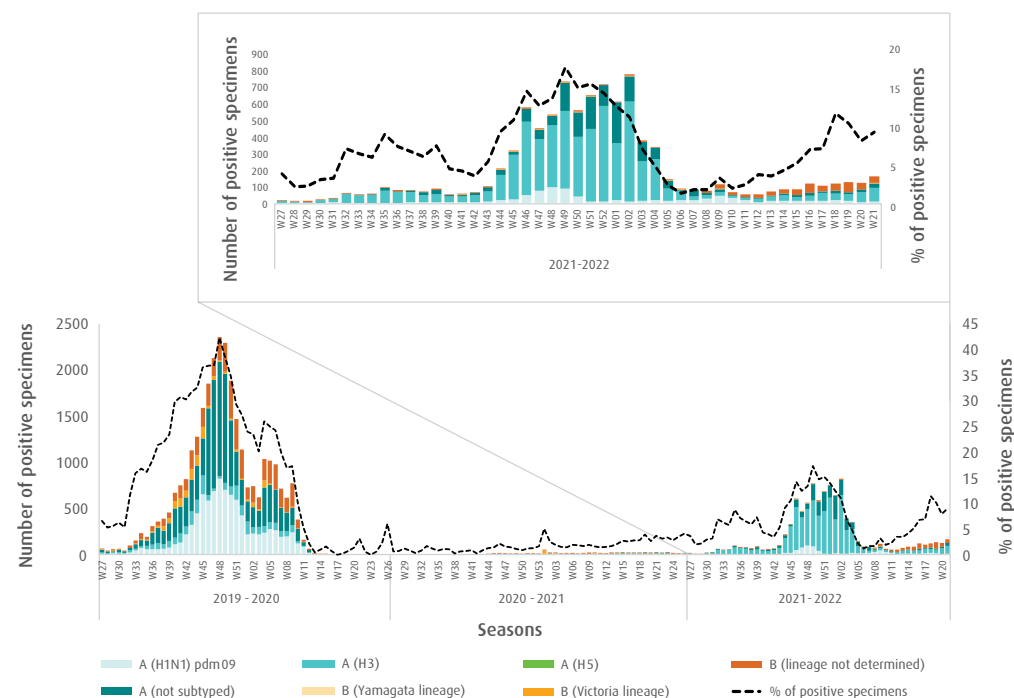
**Fig. 1.** Number of reporting countries to EMFLU/FluNet by week in the Region, week 27, 2021 – week 21, 2022



**Table.** Number of enrolled cases and number of tested specimens by reporting countries in the Region, week 21, 2022

Country	Number of enrolled cases	Number of tested specimens (%)
Afghanistan	50	50 (100)
Egypt	63	63 (100)
Iran (Islamic Republic of)	145	145 (100)
Iraq	45	45 (100)
Lebanon	6	6 (100)
Libya	3	3 (100)
Oman	72	72 (100)
Pakistan	980	980 (100)
Qatar	416	416 (100)
Saudi Arabia	102	72 (71)
Somalia	3	3 (100)
Syrian Arab Republic	11	11 (100)
United Arab Emirates	31	31 (100)
<b>Total</b>	<b>1927</b>	<b>1897 (98)</b>

**Fig. 2.** Number of positive specimens by subtype/lineage and percentage of specimens testing positive for influenza viruses starting from week 27, 2019 till week 21, 2022



**Fig. 3.** Proportion of influenza subtypes/lineages in the Region, week 21, 2022

