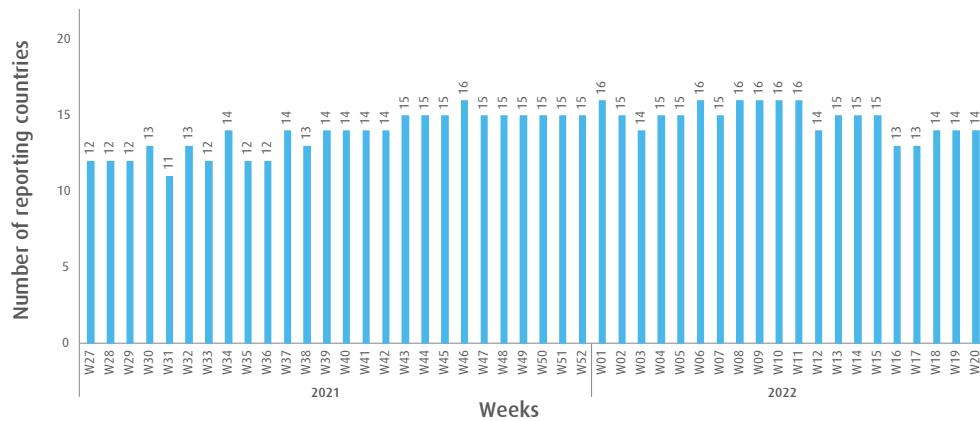


# INFLUENZA SITUATION IN THE EASTERN MEDITERRANEAN REGION

## Week 20, 2022 (15 May–21 May)

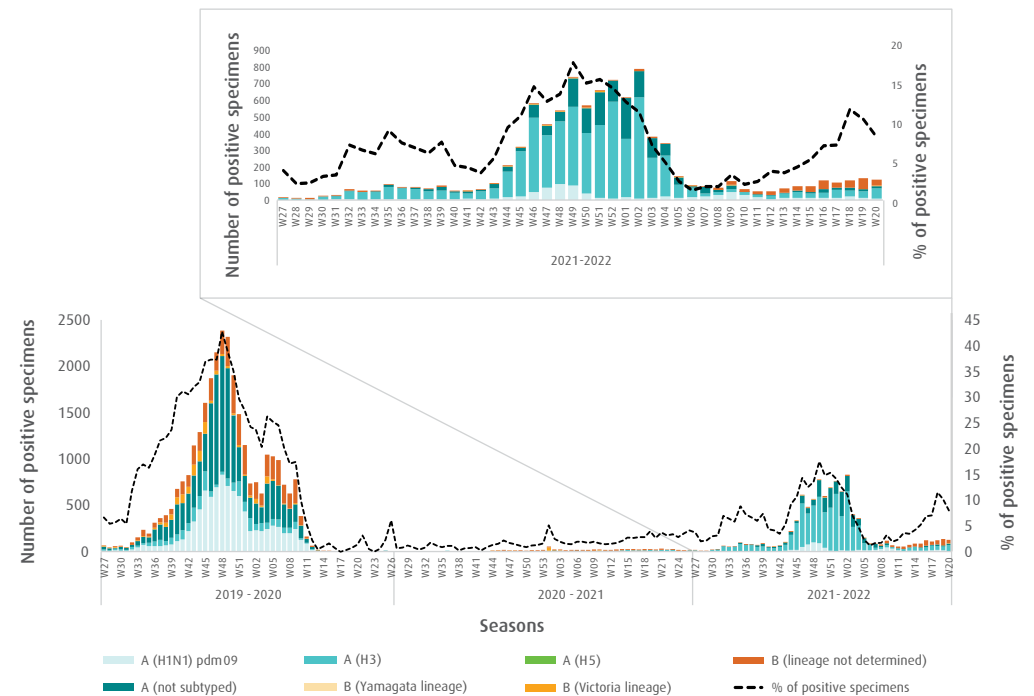
**Fig. 1.** Number of reporting countries to EMFLU/FluNet by week in the Region, week 27, 2021 – week 20, 2022



**Table.** Number of enrolled cases and number of tested specimens by reporting countries in the Region, week 20, 2022

Country	Number of enrolled cases	Number of tested specimens (%)
Afghanistan	40	40 (100)
Egypt	173	173 (100)
Iran (Islamic Republic of)	131	131 (100)
Iraq	37	37 (100)
Lebanon	10	10 (100)
Libya	7	7 (100)
Oman	83	82 (99)
Pakistan	615	615 (100)
Qatar	337	337 (100)
Saudi Arabia	79	62 (78)
Somalia	2	2 (100)
Syrian Arab Republic	4	4 (100)
Tunisia	110	110 (100)
United Arab Emirates	36	36 (100)
<b>Total</b>	<b>1664</b>	<b>1494 (99)</b>

**Fig. 2.** Number of positive specimens by subtype/lineage and percentage of specimens testing positive for influenza viruses starting from week 27, 2019 till week 20, 2022



**Fig. 3.** Proportion of influenza subtypes/lineages in the Region, week 20, 2022

