

INFLUENZA SITUATION IN THE EASTERN MEDITERRANEAN REGION

Week 16, 2022 (17 April–23 April)

Fig. 1. Number of reporting countries to EMFLU/FluNet by week in the Region, week 27, 2021 – week 16, 2022

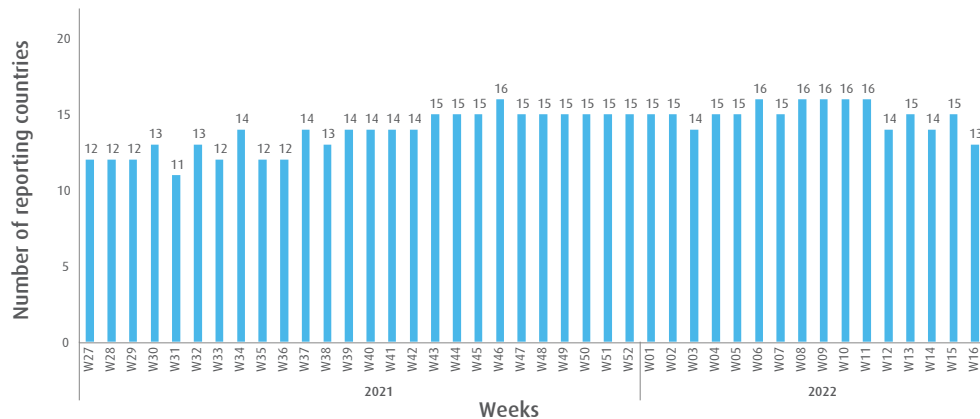


Table. Number of enrolled cases and number of tested specimens by reporting countries in the Region, week 16, 2022

Country	Number of enrolled cases	Number of tested specimens (%)
Afghanistan	85	0 (0)
Egypt	188	188 (100)
Iran (Islamic Republic of)	245	245 (100)
Iraq	48	48 (100)
Lebanon	17	17 (100)
Libya	4	4 (100)
Oman	93	93 (100)
Pakistan	681	681 (100)
Qatar	301	301 (100)
Saudi Arabia	7	3 (43)
Somalia	37	31 (84)
Syrian Arab Republic	22	0 (0)
Tunisia	63	63 (100)
Total	1791	1674 (93)

Fig. 2. Number of positive specimens by subtype/lineage and percentage of specimens testing positive for influenza viruses starting from week 27, 2019 till week 16, 2022

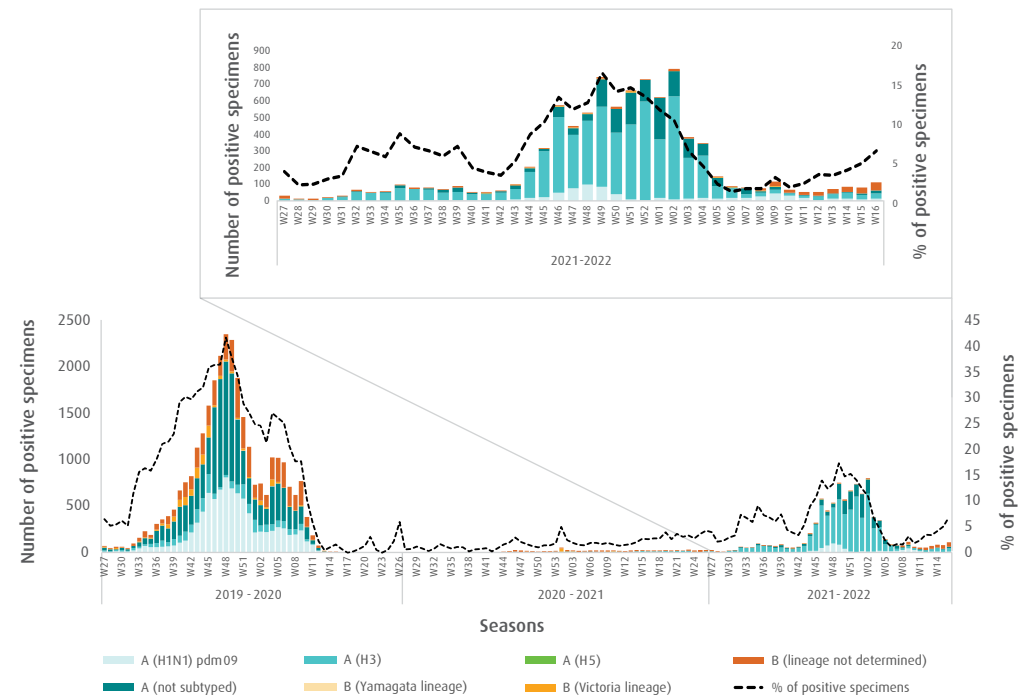


Fig. 3. Proportion of influenza subtypes/lineages in the Region, week 16, 2022

