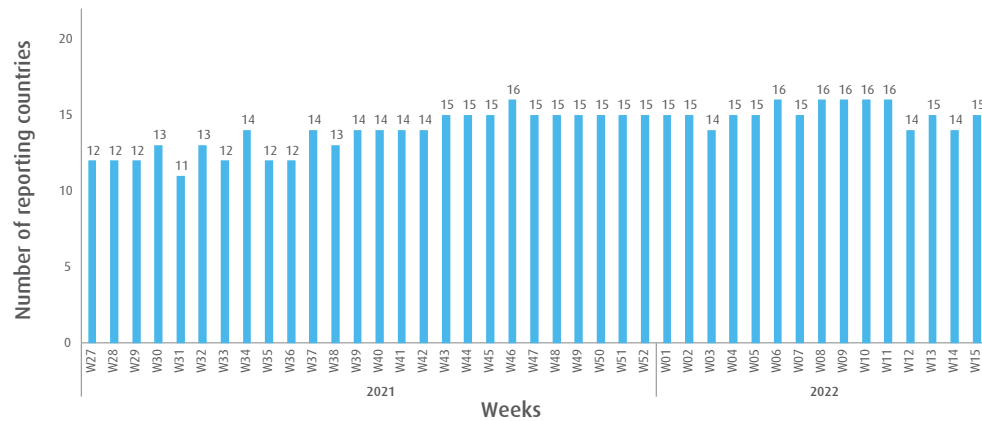


# INFLUENZA SITUATION IN THE EASTERN MEDITERRANEAN REGION

## Week 15, 2022 (10 April–16 April)

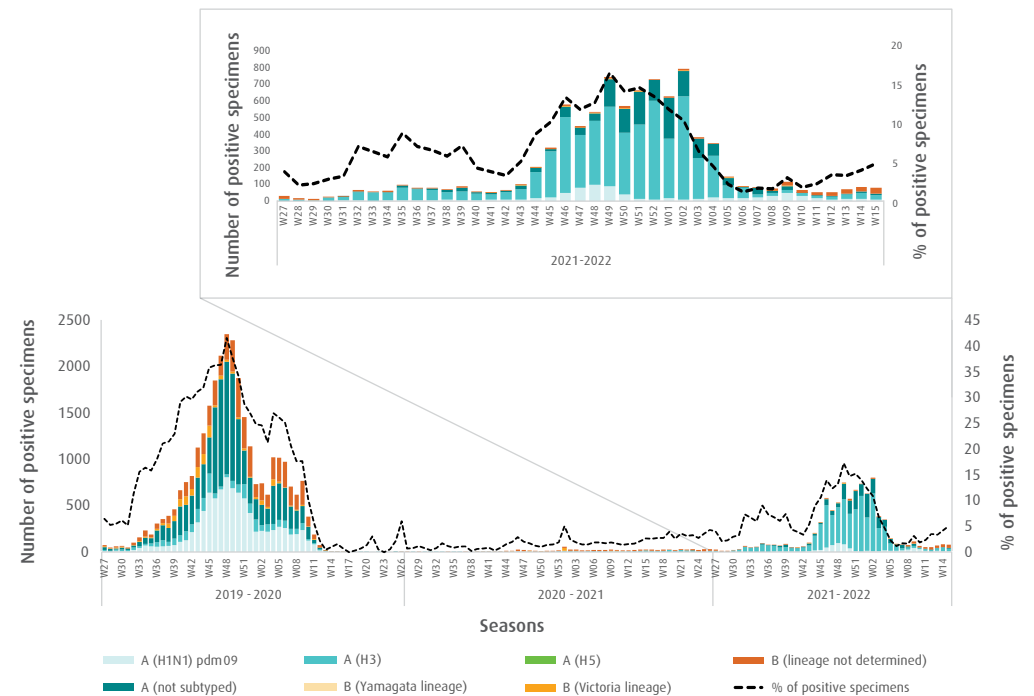
**Fig. 1.** Number of reporting countries to EMFLU/FluNet by week in the Region, week 27, 2021 – week 15, 2022



**Table.** Number of enrolled cases and number of tested specimens by reporting countries in the Region, week 15, 2022

Country	Number of enrolled cases	Number of tested specimens (%)
Afghanistan	45	45 (100)
Egypt	228	228 (100)
Iran (Islamic Republic of)	227	227 (100)
Iraq	54	54 (100)
Jordan	24	24 (100)
Lebanon	29	29 (100)
Libya	5	5 (100)
Oman	96	96 (100)
Pakistan	546	546 (100)
Qatar	287	287 (100)
Saudi Arabia	11	5 (45)
Somalia	4	4 (100)
Syrian Arab Republic	26	0 (0)
Tunisia	62	62 (100)
United Arab Emirates	24	24 (100)
<b>Total</b>	<b>1668</b>	<b>1636 (98)</b>

**Fig. 2.** Number of positive specimens by subtype/lineage and percentage of specimens testing positive for influenza viruses starting from week 27, 2019 till week 15, 2022



**Fig. 3.** Proportion of influenza subtypes/lineages in the Region, week 15, 2022

