

INFLUENZA SITUATION IN THE EASTERN MEDITERRANEAN REGION

Week 14, 2022 (03 April–09 April)

Fig. 1. Number of reporting countries to EMFLU/FluNet by week in the Region, week 27, 2021 – week 14, 2022

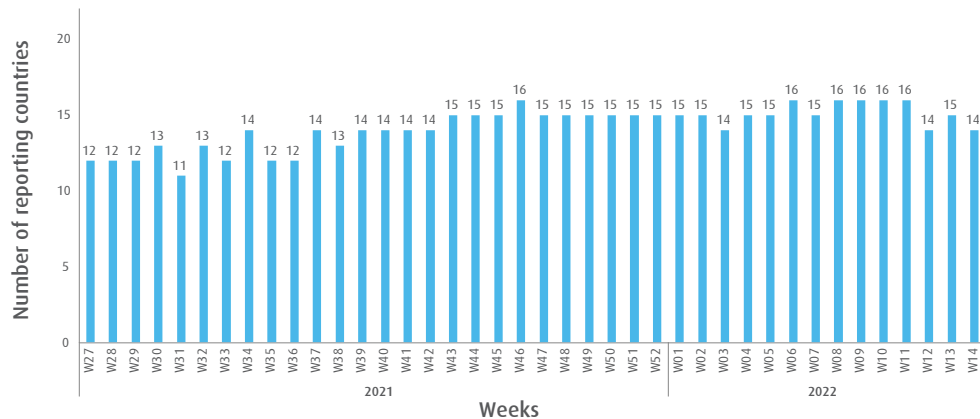


Table. Number of enrolled cases and number of tested specimens by reporting countries in the Region, week 14, 2022

| Country | Number of enrolled cases | Number of tested specimens (%) |
|----------------------------|--------------------------|--------------------------------|
| Afghanistan | 64 | 64 (100) |
| Egypt | 178 | 178 (100) |
| Iran (Islamic Republic of) | 389 | 389 (100) |
| Iraq | 46 | 46 (100) |
| Jordan | 46 | 46 (100) |
| Lebanon | 26 | 26 (100) |
| Libya | 7 | 7 (100) |
| Oman | 116 | 116 (100) |
| Pakistan | 780 | 780 (100) |
| Qatar | 277 | 277 (100) |
| Saudi Arabia | 11 | 4 (36) |
| Syrian Arab Republic | 19 | 0 (0) |
| Tunisia | 73 | 73 (100) |
| United Arab Emirates | 45 | 45 (100) |
| Total | 2077 | 2051 (99) |

Fig. 2. Number of positive specimens by subtype/lineage and percentage of specimens testing positive for influenza viruses starting from week 27, 2019 till week 14, 2022

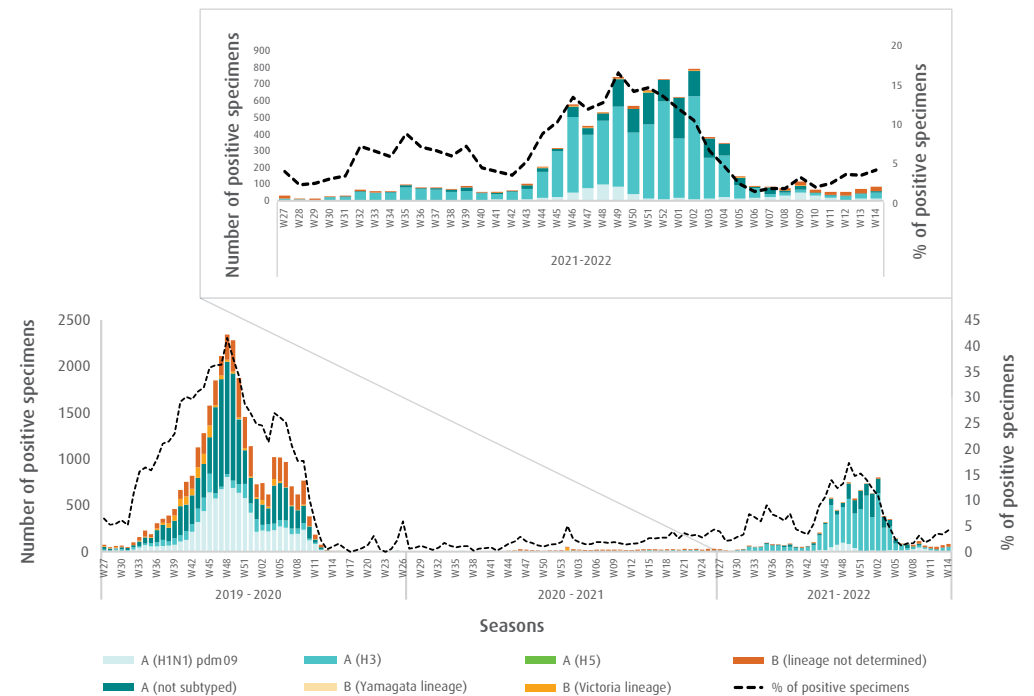


Fig. 3. Proportion of influenza subtypes/lineages in the Region, week 14, 2022

