

INFLUENZA SITUATION IN THE EASTERN MEDITERRANEAN REGION

Week 13, 2022 (27 March–2 April)

Fig. 1. Number of reporting countries to EMFLU/FluNet by week in the Region, week 27, 2021 – week 13, 2022

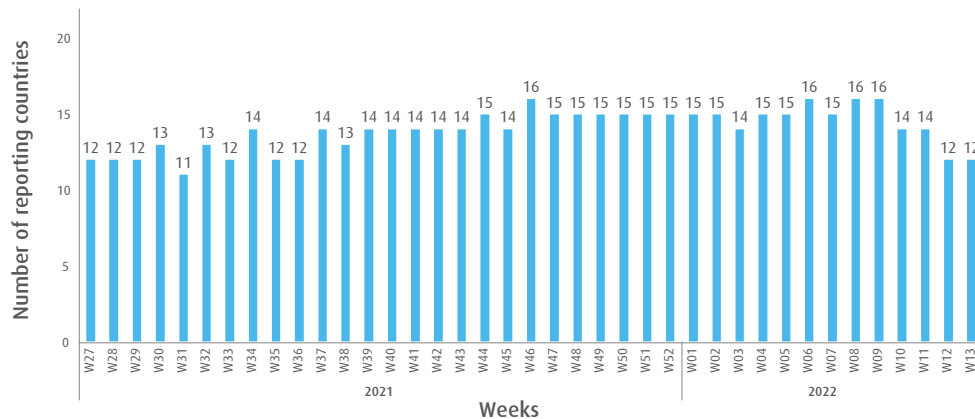


Table. Number of enrolled cases and number of tested specimens by reporting countries in the Region, week 13, 2022

Country	Number of enrolled cases	Number of tested specimens (%)
Afghanistan	85	(-)
Egypt	58	58 (100)
Iran (Islamic Republic of)	275	275 (100)
Lebanon	44	44 (100)
Libya	9	9 (100)
Oman	111	110 (99)
Pakistan	810	810 (100)
Saudi Arabia	7	3 (42.9)
Somalia	4	2 (50)
Syrian Arab Republic	2	2 (100)
Tunisia	163	163 (100)
United Arab Emirates	38	38 (100)
Total	1606	1514 (94.3)

Fig. 2. Number of positive specimens by subtype/lineage and percentage of specimens testing positive for influenza viruses starting from week 27, 2019 till week 13, 2022

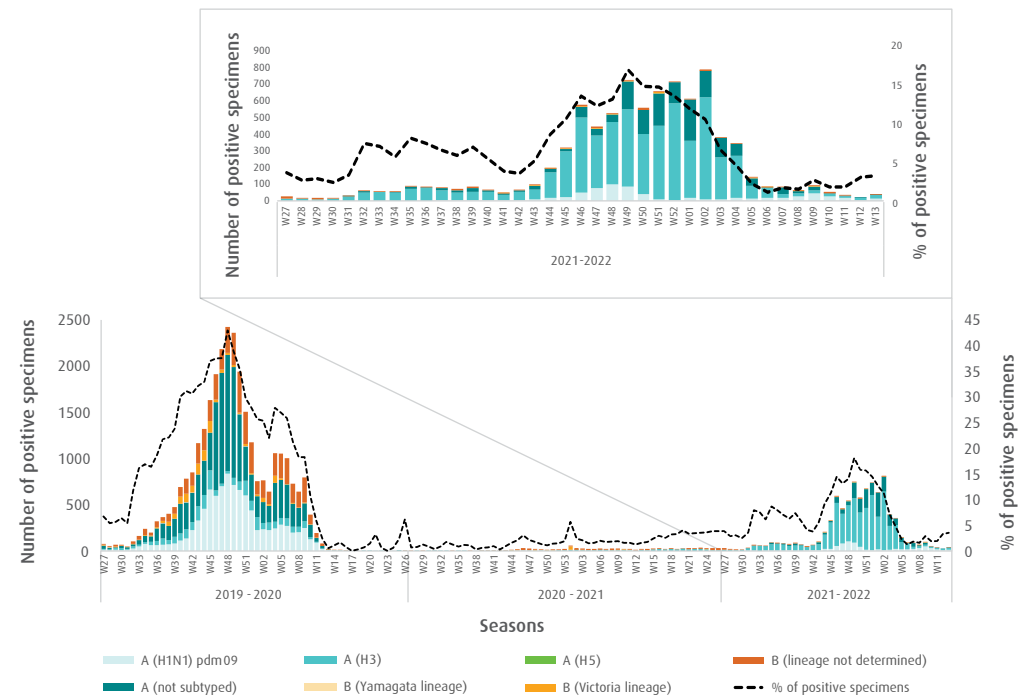


Fig. 3. Proportion of influenza subtypes/lineages in the Region, week 13, 2022

