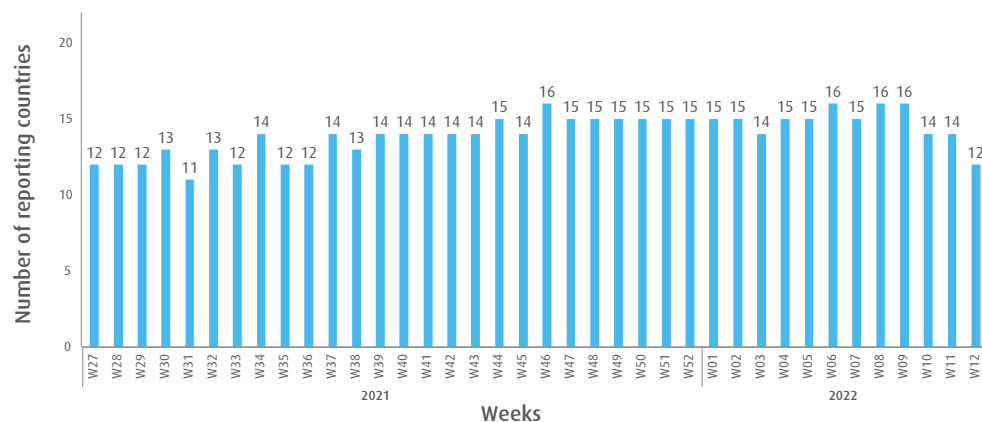


# INFLUENZA SITUATION IN THE EASTERN MEDITERRANEAN REGION

## Week 12, 2022 (20–26 March 2022)

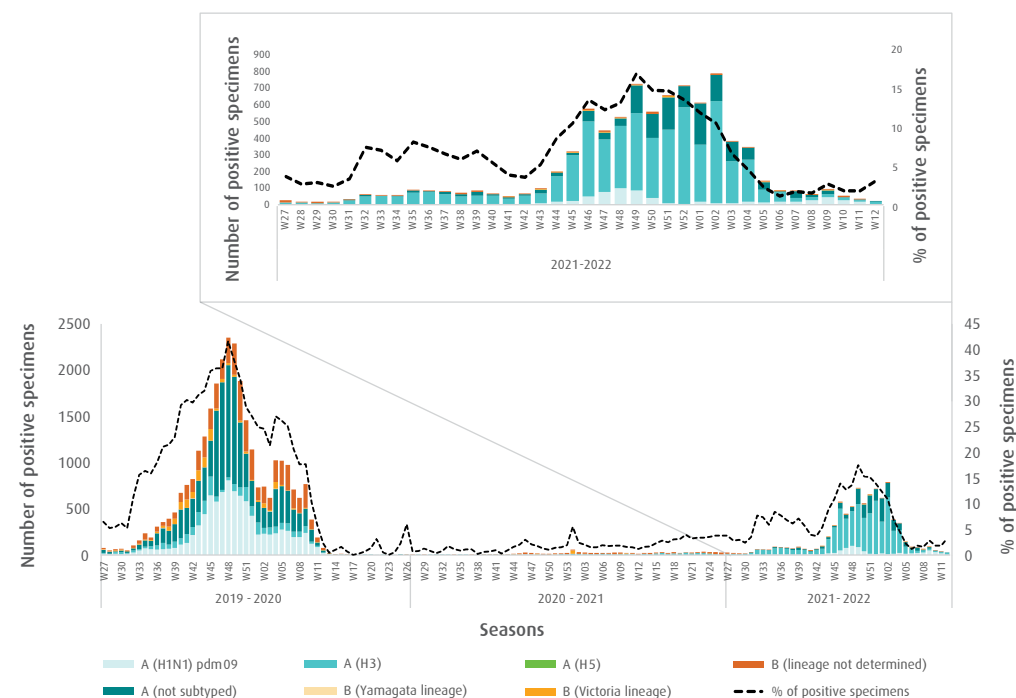
**Fig. 1.** Number of reporting countries to EMFLU/FluNet by week in the Region, week 27, 2021 – week 12, 2022



**Table.** Number of enrolled cases and number of tested specimens by reporting countries in the Region, week 12, 2022

Country	Number of enrolled cases	Number of tested specimens (%)
Afghanistan	97	(-)
Egypt	85	85 (100)
Iran (Islamic Republic of)	274	274 (100)
Iraq	82	82 (100)
Lebanon	44	44 (100)
Libya	8	8 (100)
Oman	133	133 (100)
Pakistan	319	319 (100)
Saudi Arabia	1	1 (100)
Syrian Arab Republic	16	16 (100)
Tunisia	94	94 (100)
United Arab Emirates	42	42 (100)
<b>Total</b>	<b>1195</b>	<b>1098 (92)</b>

**Fig. 2.** Number of positive specimens by subtype/lineage and percentage of specimens testing positive for influenza viruses starting from week 27, 2019 till week 12, 2022



**Fig. 3.** Proportion of influenza subtypes/lineages in the Region, week 12, 2022

