

INFLUENZA SITUATION IN THE EASTERN MEDITERRANEAN REGION

Week 11, 2022 (13–19 March 2022)

Fig. 1. Number of reporting countries to EMFLU/FluNet by week in the Region, week 27, 2021 – week 11, 2022

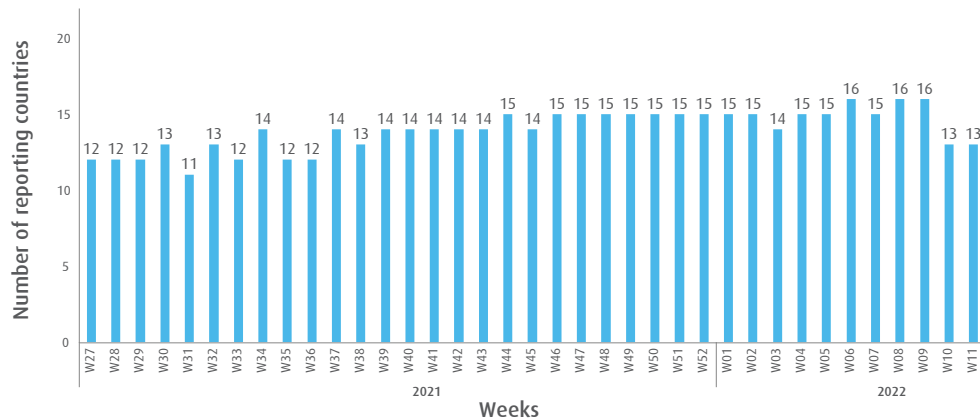


Table. Number of enrolled cases and number of tested specimens by reporting countries in the Region, week 11, 2022

Country	Number of enrolled cases	Number of tested specimens (%)
Afghanistan	80	80 (100)
Egypt	39	39 (100)
Iran (Islamic Republic of)	517	517 (100)
Iraq	33	33 (100)
Lebanon	16	16 (100)
Libyan Arab Jamahiriya	7	7 (100)
Oman	184	184 (100)
Pakistan	891	891 (100)
Saudi Arabia	2	1 (50)
Somalia	1	1 (100)
Syrian Arab Republic	12	12 (100)
Tunisia	50	50 (100)
United Arab Emirates	25	25 (100)
Total	1857	1856 (99.9)

Fig. 2. Number of positive specimens by subtype/lineage and percentage of specimens testing positive for influenza viruses starting from week 27, 2019 till week 11, 2022

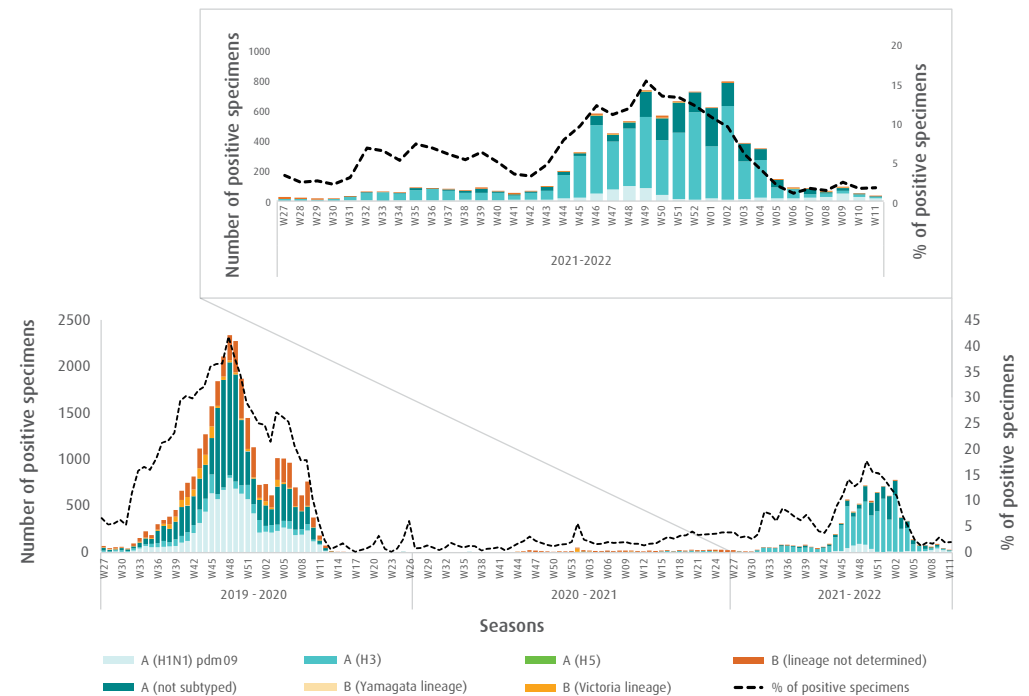


Fig. 3. Proportion of influenza subtypes/lineages in the Region, week 11, 2022

