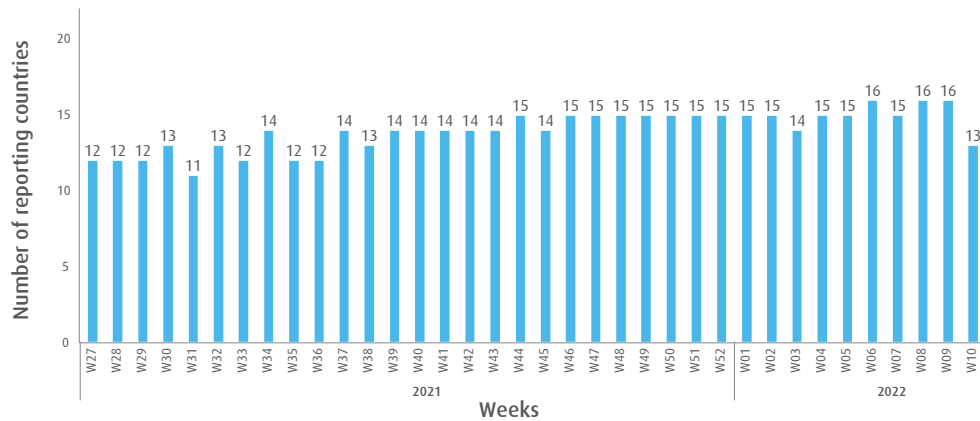


# INFLUENZA SITUATION IN THE EASTERN MEDITERRANEAN REGION

## Week 10, 2022 (6–12 March 2022)

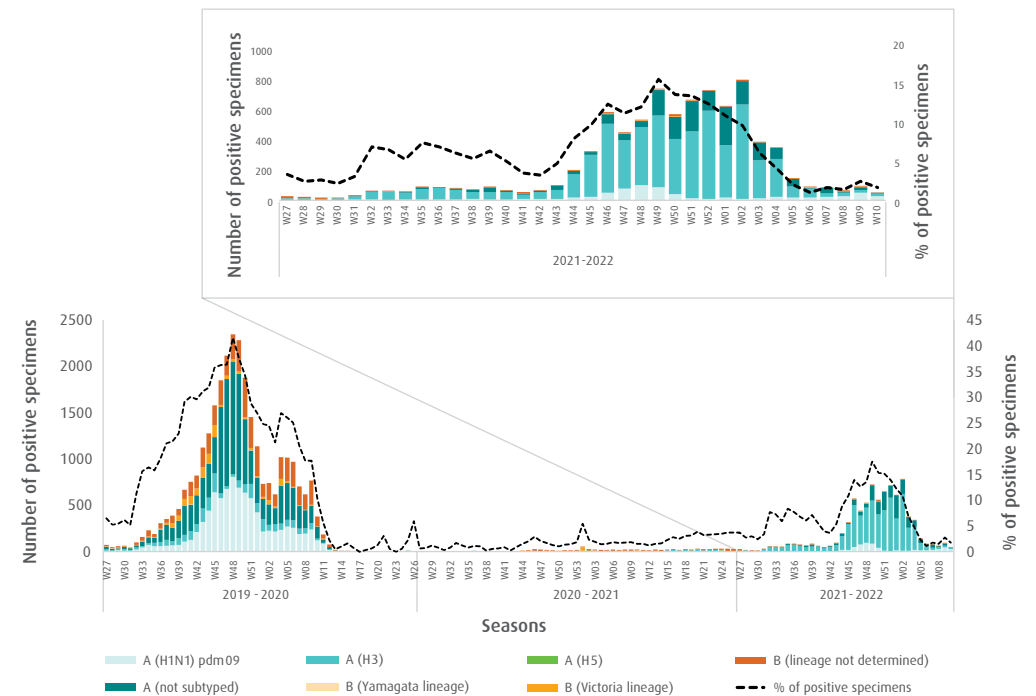
**Fig. 1.** Number of reporting countries to EMFLU/FluNet by week in the Region, week 27, 2021 – week 10, 2022



**Table.** Number of enrolled cases and number of tested specimens by reporting countries in the Region, week 10, 2022

Country	Number of enrolled cases	Number of tested specimens (%)
Afghanistan	70	70 (100)
Egypt	92	92 (100)
Iran (Islamic Republic of)	955	955 (100)
Iraq	140	140 (100)
Lebanon	212	212 (100)
Libyan Arab Jamahiriya	8	8 (100)
Oman	232	232 (100)
Pakistan	1298	1298 (100)
Saudi Arabia	6	1 (16.7)
Somalia	5	5 (100)
Syrian Arab Republic	35	35 (100)
Tunisia	50	50 (100)
United Arab Emirates	34	34 (100)
<b>Total</b>	<b>3137</b>	<b>3132 (99.8)</b>

**Fig. 2.** Number of positive specimens by subtype/lineage and percentage of specimens testing positive for influenza viruses starting from week 27, 2019 till week 10, 2022



**Fig. 3.** Proportion of influenza subtypes/lineages in the Region, week 10, 2022

