

COVID-19 MONTHLY UPDATE | FEBRUARY 2022

Highlights

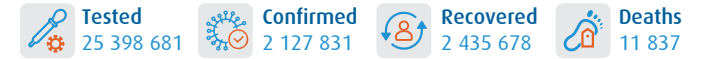
- In February 2022, a total of 2 127 831 COVID-19 cases were reported from the 22 countries of the Eastern Mediterranean Region (EMR). There was a 12% increase in overall reported cases as compared to the previous month when it was 1 875 777. The highest number of cases was reported from Islamic Republic of Iran followed by Jordan and Lebanon.
- During December 2021, a total of 11 837 related deaths were reported from the Region with Islamic Republic of Iran reporting the highest number of deaths followed by Tunisia and Egypt. There was a 51% increase in reported deaths compared to the previous month when it was 5827.
- Only 15 of the 22 countries in the Region reported an increase in COVID-19 cases and deaths during the month of February, which is the same as January.
- Since the start of the pandemic, a total of 21 290 981 confirmed COVID-19 cases including 334 010 related deaths (CFR 1.6%) were reported from the 22 countries.
- 21 countries have reported one or more new variants of concern (VOC) in the Region: Alpha in 21 countries, Beta in 18 countries, Gamma in 6 countries, Delta in 18 countries and Omicron in 15 countries.
- Vaccination continues across the Region. The total number of doses administered so far in the 22 countries is 654 786 702.

COVID-19 cases and deaths by EMR countries, 29 January 2020 to 31 January 2022

Countries	February		Cumulative figures			Trend*
	New cases	New deaths	Cases	Deaths	CFR%	
Afghanistan	9939	181	173 659	7598	4.4	↑
Bahrain	140 308	45	514 883	1454	0.3	↑
Djibouti	83	0	15 547	189	1	↓
Egypt	57 860	1405	483 771	24 074	5.0	↑
Islamic Republic of Iran	678 255	4177	7 051 429	136 838	1.9	↑
Iraq	92 211	586	2 302 793	24 989	1.1	↓
Jordan	406 399	597	1 631 708	13 835	0.8	↑
Kuwait	74 177	40	619 894	2538	0	↓
Lebanon	147 502	473	1 068 710	10 091	0.9	↓
Libya	60 514	233	494 446	6261	1	↑
Morocco	28 259	578	1 160 975	15 988	1.4	↓
Occupied Palestinian territory	112 043	397	647 203	5513	0.9	↑
Oman	43 364	96	382 244	4244	1.1	↑
Pakistan	78 994	877	1 509 360	30 178	2.0	↓
Qatar	17 835	23	356 982	670	0.2	↓
Saudi Arabia	57 763	56	745 027	8998	1.2	↓
Somalia	246	13	26 313	1348	5	↓
Sudan	2865	376	61 488	3909	6.4	↓
Syrian Arab Republic	3173	82	54 575	3075	5.6	↑
Tunisia	80 416	1422	998 230	27 784	2.8	↓
United Arab Emirates	34 915	58	879 973	2301	0.3	↓
Yemen	710	122	11 771	2135	18.1	↓
Total	2 127 831	11 837	21 190 981	334 010	1.6	↑

*trend refers to % changes in the cases compared to previous month

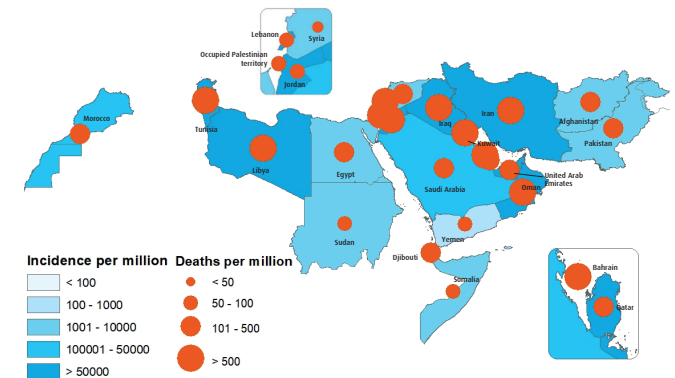
Key figures, February 2022



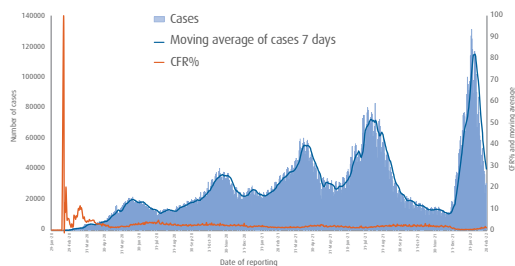
Cumulative key figures, 29 January 2020 to 28 February 2022



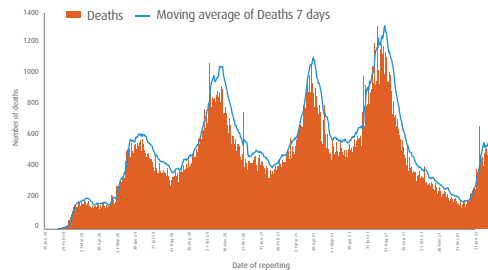
COVID-19 cases and deaths per million population in EMR, 29 January 2020 to 28 February 2022



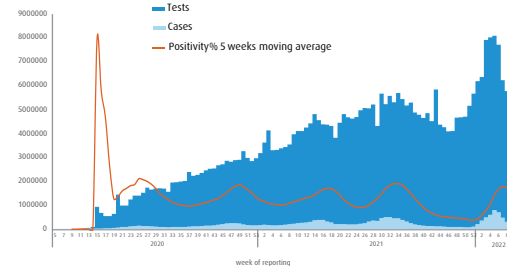
Distribution of weekly COVID-19 tested in EMR, 29 January 2020 to 28 February 2022



Distribution of daily deaths in EMR, 29 January 2020 to 28 February 2022



Distribution of weekly COVID-19 tested in EMR, 29 January 2020 to 28 February 2022



Distribution of COVID-19 cases by age and gender in EMR, 29 January 2020 to 28 February 2022

