

INFLUENZA SITUATION IN THE EASTERN MEDITERRANEAN REGION

Week 2, 2022 (9–15 January 2022)

Fig. 1. Number of reporting countries to EMFLU/FluNet by week in the Region, week 27, 2021 – week 2, 2022

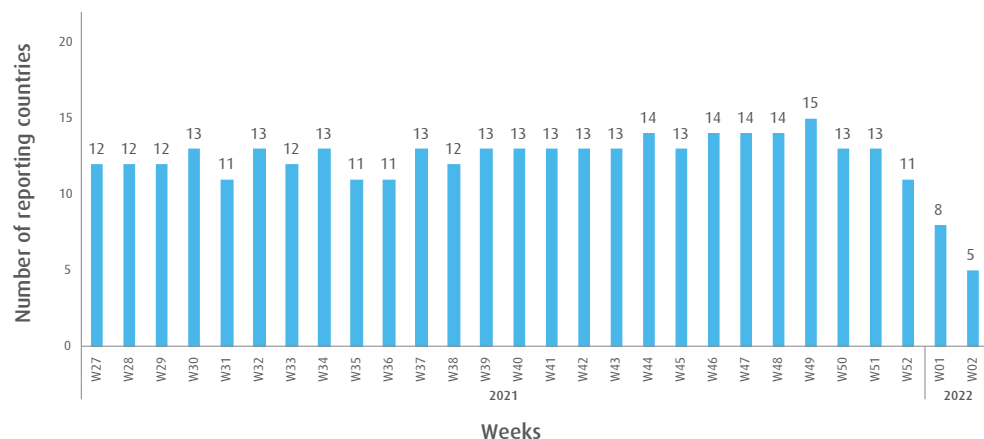


Table. Number of enrolled cases and number of tested specimens by reporting countries in the Region, week 2, 2022

Country	Number of enrolled cases	Number of tested specimens (%)
Afghanistan	76	0 (0)
Iraq	2	2 (100)
Lebanon	217	217 (100)
Qatar	142	142 (100)
Saudi Arabia	8	3 (38)
Total	445	364 (82)

Fig. 2. Number of positive specimens by subtype/lineage and percentage of specimens testing positive for influenza viruses starting from week 27, 2019 till week 2, 2022

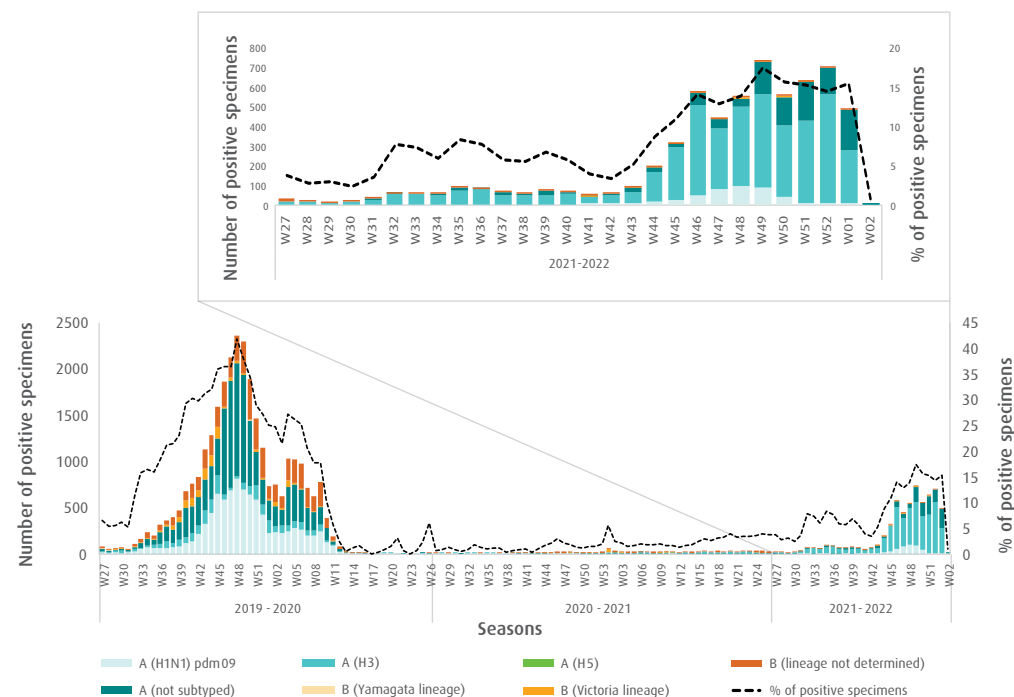


Fig. 3. Proportion of influenza subtypes/lineages in the Region, week 2, 2022

