

INFLUENZA SITUATION IN THE EASTERN MEDITERRANEAN REGION

Week 1, 2022 (1–8 January 2022)

Fig. 1. Number of reporting countries to EMFLU/FluNet by week in the Region, week 27, 2021 – week 1, 2022

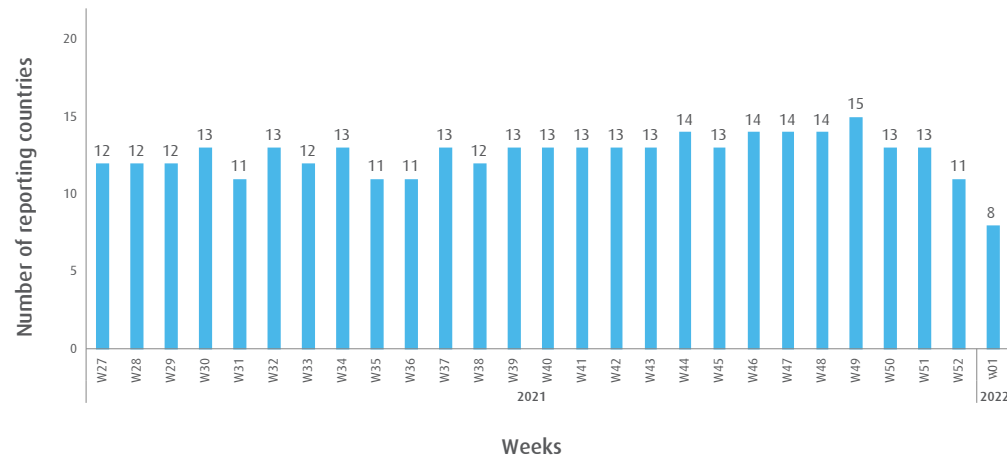


Table. Number of enrolled cases and number of tested specimens by reporting countries in the Region, week 1, 2022

Country	Number of enrolled cases	Number of tested specimens (%)
Afghanistan	126	120 (95)
Iran (Islamic Republic of)	2323	2323 (100)
Iraq	15	15 (100)
Lebanon	225	225 (100)
Oman	208	207 (99)
Qatar	238	238 (100)
Saudi Arabia	22	6 (27)
United Arab Emirates	48	48 (100)
Total	3205	3182 (99)

Fig. 2. Number of positive specimens by subtype/lineage and percentage of specimens testing positive for influenza viruses starting from week 27, 2019 till week 1, 2022

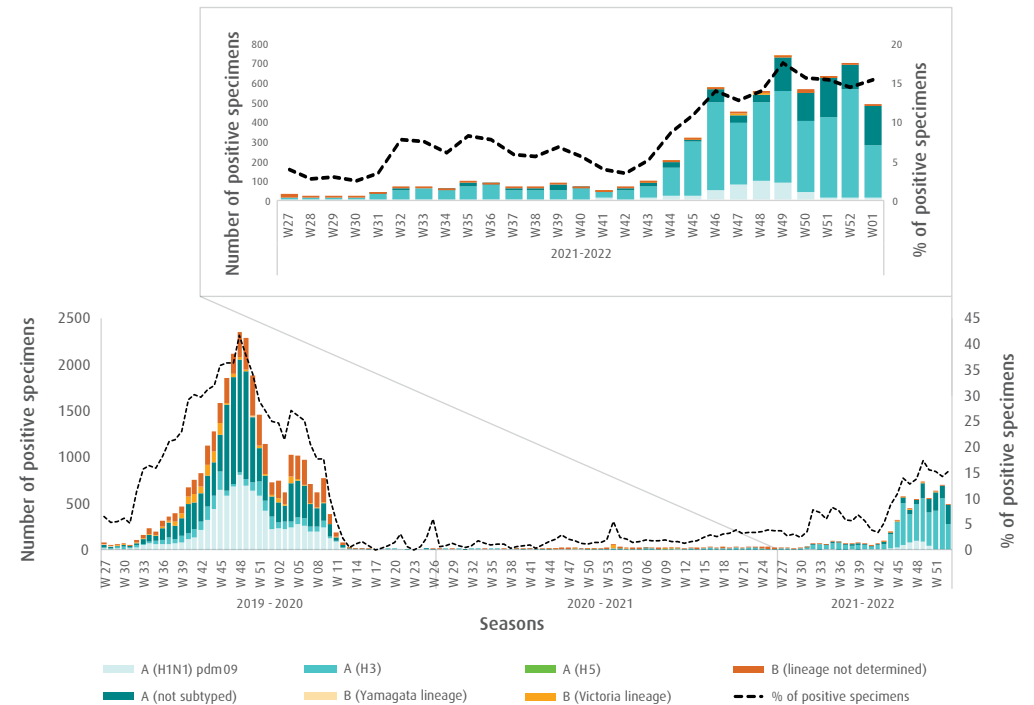


Fig. 3. Proportion of influenza subtypes/lineages in the Region, week 1, 2022

