

Influenza monthly update

In November 2021 (weeks 44–47), 14 countries in the Eastern Mediterranean Region (EMR) reported data to FluNet and EMFLU, namely Afghanistan, Bahrain, Egypt, Iran (Islamic Republic of), Iraq, Jordan, Lebanon, Oman, Pakistan, Qatar, Saudi Arabia, Syrian Arab Republic, Tunisia and United Arab Emirates.

Out of the 12 211 enrolled cases in the Region during this month, 12 175 specimens were tested for influenza, of which only 1494 specimens tested positive.

Influenza activity by subtype

▪ In the northern Africa influenza transmission zone, there has been no influenza activity detected in both Egypt and Tunisia.

▪ In the western Asia influenza transmission zone, influenza A(H3) was the only detected influenza virus in Iraq, Jordan, Lebanon and Syria. In Qatar and United Arab Emirates, both influenza A and B types have been detected with predominant presence of influenza A(H3) subtype. In Oman, both influenza A(H3) and A (H1N1) pdm09 subtypes have been detected with again predominant presence of the influenza A(H3) subtype. Saudi Arabia has detected like last month only three un-subtyped influenza A viruses. Bahrain reported no influenza activity during November.

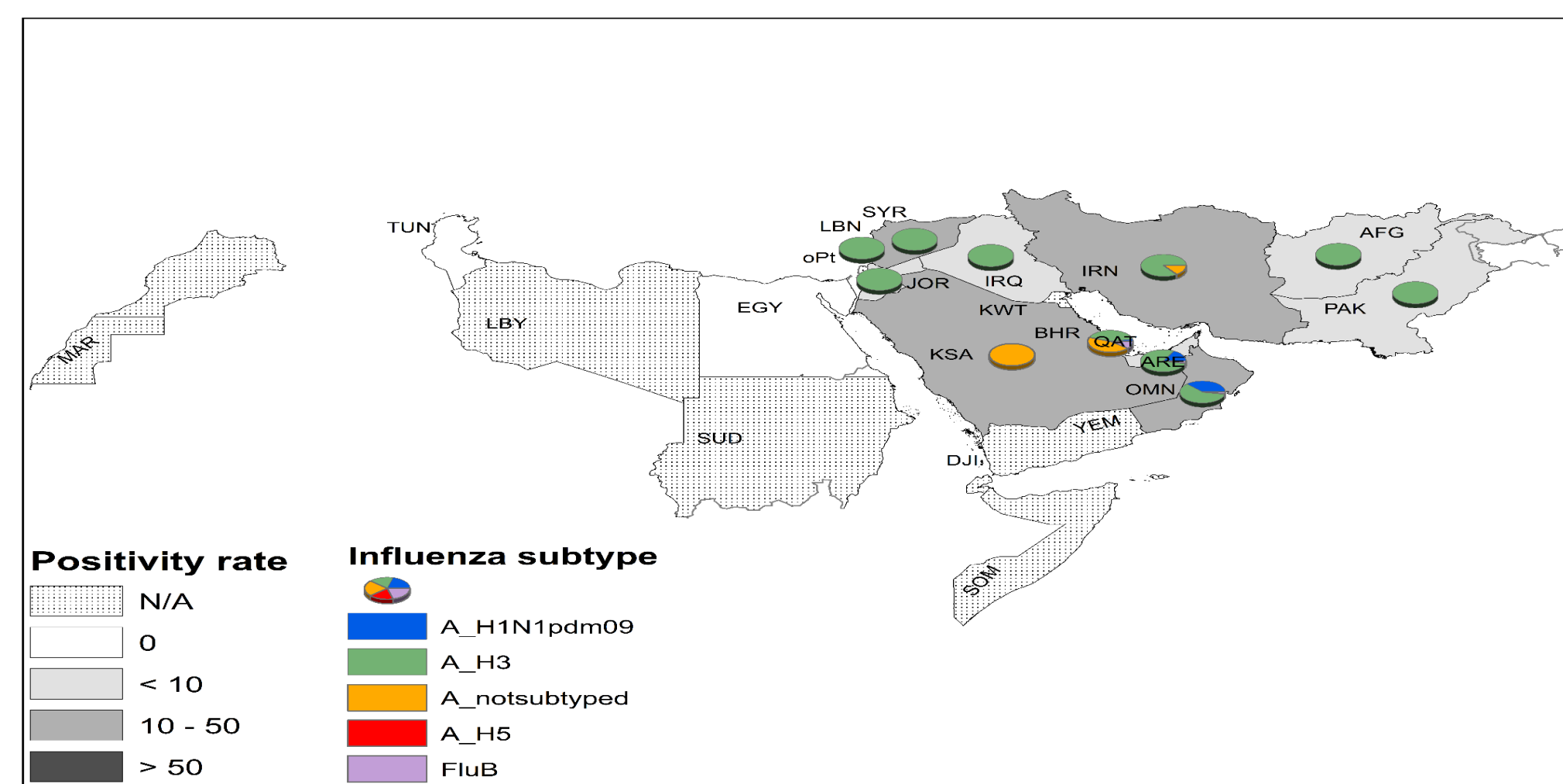
▪ In the southern Asia transmission zone, influenza A(H3) virus was the only detected subtype in Afghanistan, Iran, and Pakistan.

Circulating influenza viruses by subtype

▪ During November 2021, national influenza centres and influenza laboratories in the Region tested 99.7% of the total enrolled cases. The Region's influenza positivity reached 12.3% with Oman recording the highest influenza positivity in the Region (45.1%).

▪ Genetic and antigenic testing: Out of the 1494 subtyped specimens, 1162 specimens (77.8%) were influenza A(H3), 160 specimens (10.7%) were influenza A (H1N1) pdm09, 146 specimens (9.8%) were influenza A (not subtyped), 16 specimens (1.1%) were influenza B (lineage not determined), and 10 specimens (0.7%) were influenza B (victoria lineage).

Source of data: FluNet and EMFLU



Disclaimer: The representation of material on the maps contained herein does not imply the expression of any opinion whatsoever on the part of the World Health Organization concerning the legal status of any country, territory, city or area or its authority of frontiers or boundaries. Dotted lines on maps represents approximate border lines for which there may not be full agreement.

Figure 1. Influenza geographic distribution/circulation, EMR, November 2021

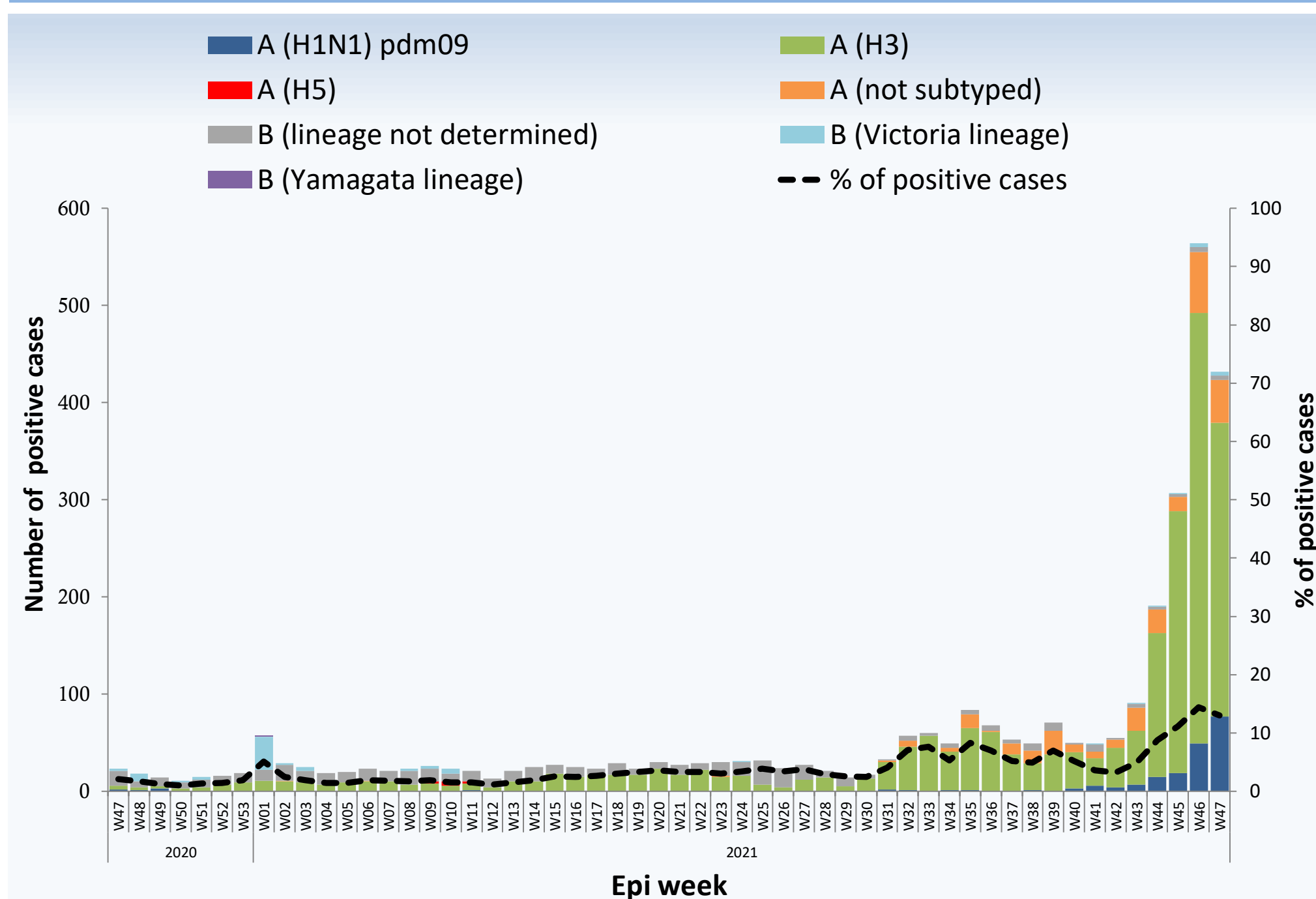


Figure 2. Number of positive influenza cases by subtyped viruses and percentage of positive cases by week, EMR, November 2021

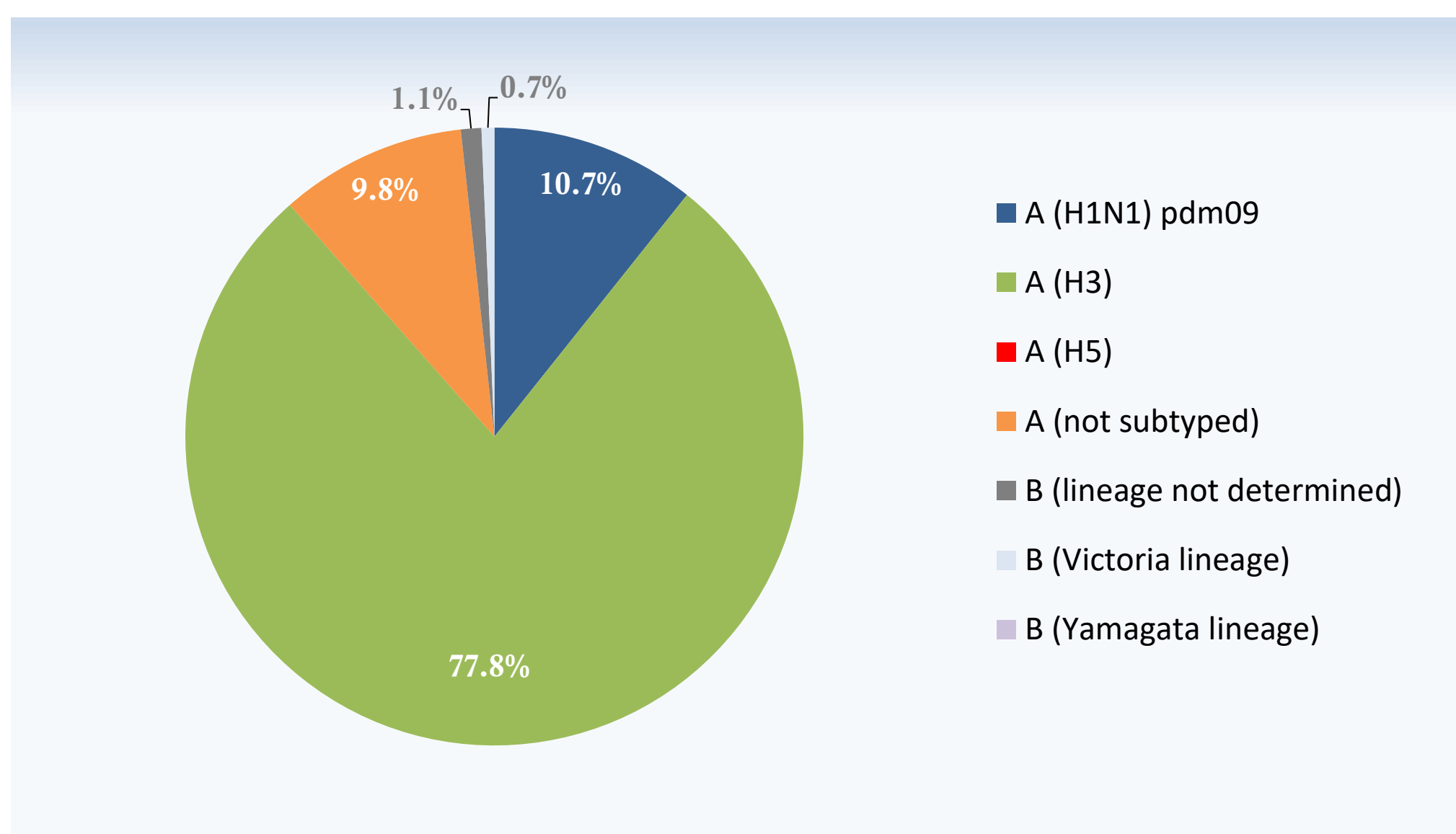


Figure 3. Subtyped influenza viruses, EMR, November 2021

© World Health Organization 2021.

Some rights reserved. This work is available under the Creative Commons Attribution-Non Commercial-Share Alike 3.0 IGO license (CC BY-NC-SA 3.0 IGO); <https://creativecommons.org/licenses/by-nc-sa/3.0/igo>.