

Influenza monthly update

In June 2021, 12 countries reported data to FluNet and EMFLU, namely Afghanistan, Egypt, Islamic Republic of Iran, Iraq, Jordan, Lebanon, Oman, Pakistan, Qatar, Saudi Arabia, Syrian Arab Republic and United Arab Emirates.

The proportion of tested cases for influenza in the Region was 93% out of 3032 enrolled cases. 3.4% of cases tested positive and 96.6% negative.

Influenza activity by subtype

- In the northern Africa influenza transmission zone, influenza A(H3) virus was detected predominantly in Egypt.
- In the western Asia influenza transmission zone, influenza B virus (lineage not determined) was the only detected influenza virus in Oman and Saudi Arabia, and was the predominant subtype in Qatar. Influenza A(H3) virus was the only detected influenza virus in Syrian Arab Republic and United Arab Emirates. Iraq, Jordan and Lebanon reported no activity.
- In the southern Asia transmission zone, influenza B virus (lineage not determined) was detected predominantly in Pakistan while Afghanistan and Islamic Republic of Iran reported no activity.

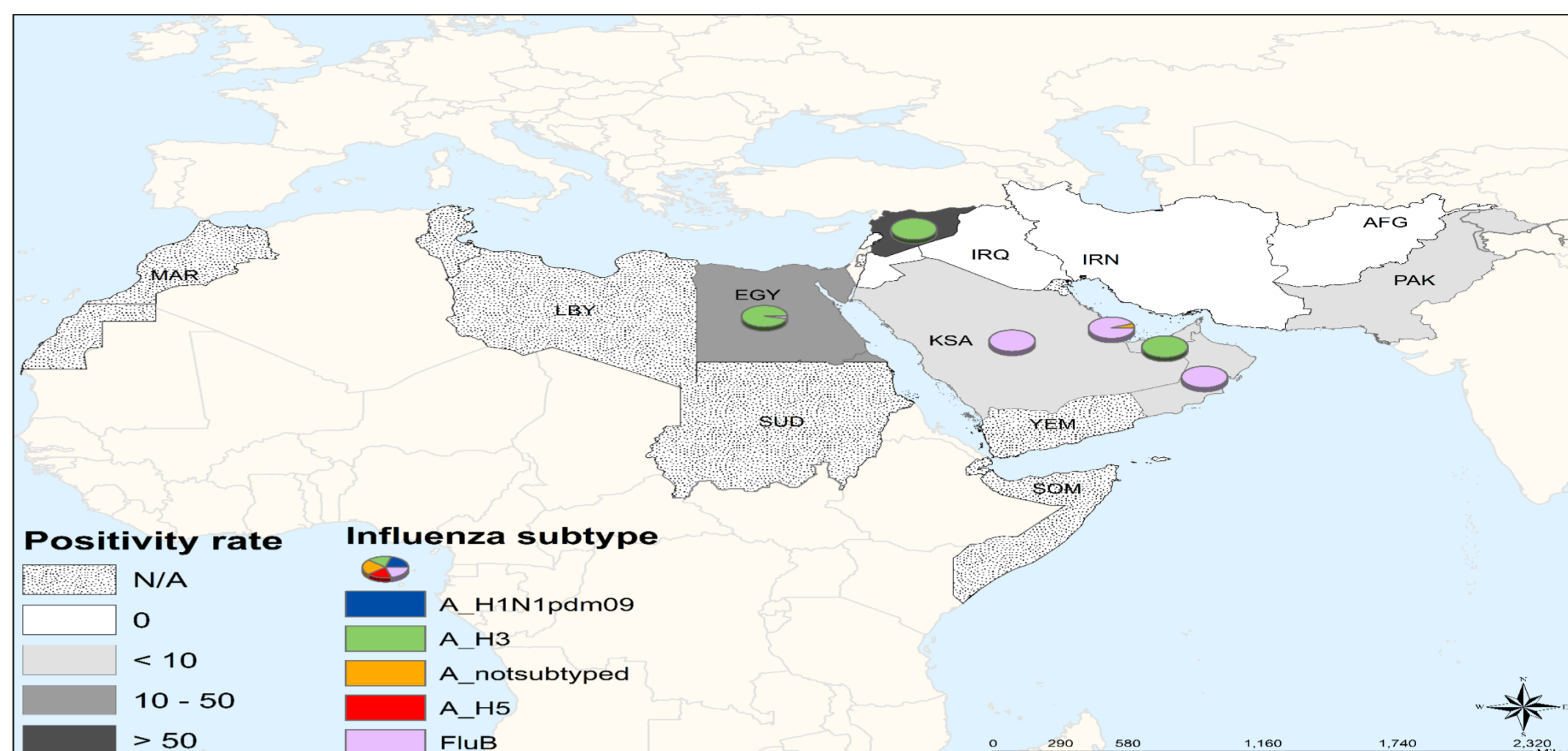
Source of transmission zones:

http://www.who.int/csr/disease/swineflu/transmission_zones/en/

Circulating influenza viruses by subtype

- During June 2021, national influenza centres and influenza laboratories in the Region tested a total of 2820 specimens for influenza viruses, of which 96 tested positive (3.4%).
- The average percentage of positive cases was 3.4%, with the highest positivity rate recorded in Qatar.
- Of the viruses tested, 57 (59%) were influenza B (lineage not determined), while 38 (40%) were influenza A(H3) and 1 (1%) were influenza A(not subtyped).

Source of data: FluNet and EMFLU



Disclaimer: The representation of material on the maps contained herein does not imply the expression of any opinion whatsoever on the part of the World Health Organization concerning the legal status of any country, territory, city or area or its authority of frontiers or boundaries. Dotted lines on maps represents approximate border lines for which there may not be full agreement.

Figure 1. Influenza geographic spread during June 2021

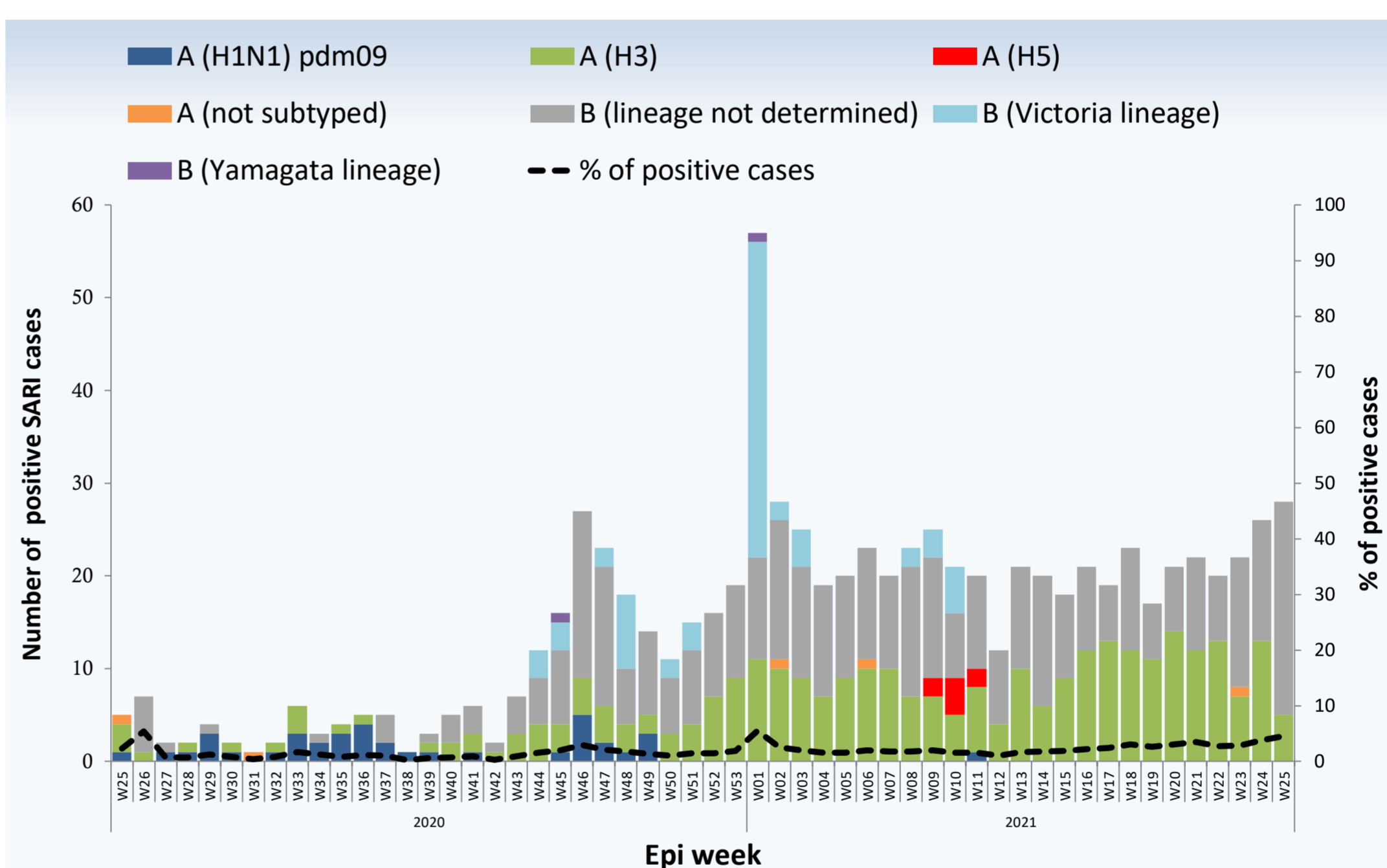


Figure 2. Weekly positive cases of influenza by subtype, weeks 25/2020–2021

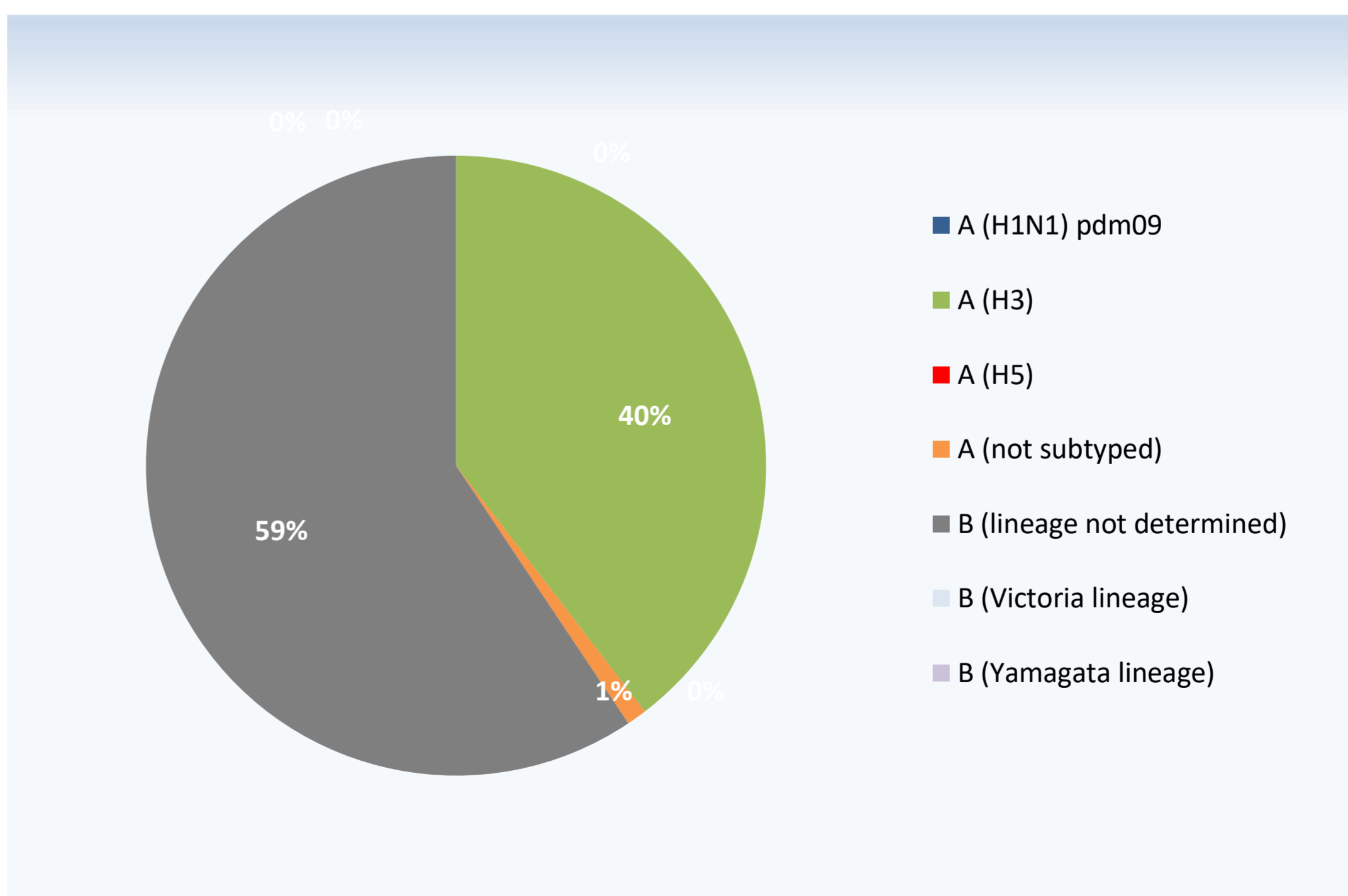


Figure 3. Circulating influenza viruses by subtype during June 2021

© World Health Organization 2021.

Some rights reserved. This work is available under the Creative Commons Attribution-Non Commercial-Share Alike 3.0 IGO license (CC BY-NC-SA 3.0 IGO); <https://creativecommons.org/licenses/by-nc-sa/3.0/igo/>.