

# Influenza monthly update

In **March 2021**, 11 countries reported data to FluNet and EMFLU, namely Afghanistan, Iran (Islamic Republic of), Iraq, Jordan, Lebanon, Morocco, Oman, Qatar, Saudi Arabia, Tunisia and United Arab Emirates.

The proportion of tested cases for influenza in the Region was 81.9% out of 3455 enrolled cases. 1.1% of cases tested positive and 98.9% negative.

## Influenza activity by sub-type

▪In the northern Africa influenza transmission zone, Morocco and Tunisia reported no activity.

▪In the western Asia influenza transmission zone, influenza B virus (lineage not determined) was the only subtype detected in Oman and Qatar, while it was the predominant subtype detected in United Arab Emirates and Saudi Arabia. Influenza A (not-subtyped) was detected predominantly in Iraq, while Jordan and Lebanon reported no activity.

▪In the southern Asia transmission zone, influenza B virus (lineage not determined) was the predominant subtype detected in Afghanistan, while Islamic Republic of Iran reported no activity.

### Source of transmission zones:

[http://www.who.int/csr/disease/swineflu/transmission\\_zones/en/](http://www.who.int/csr/disease/swineflu/transmission_zones/en/)

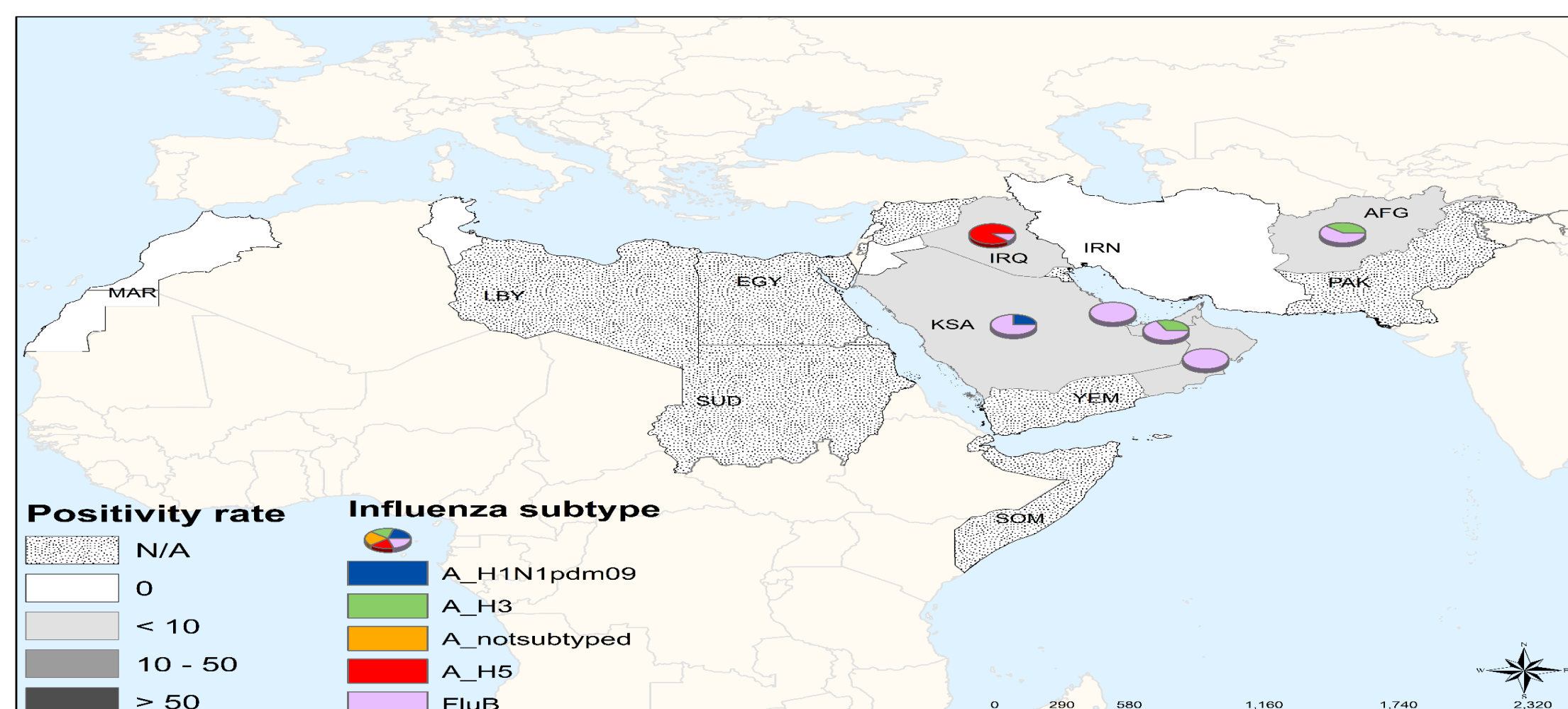
## Circulating influenza viruses by sub-type

▪During **March 2021**, national influenza centres and influenza laboratories in the Region tested a total of 2831 specimens for influenza viruses, of which 31 tested positive (1.1%).

▪The average percentage of positive rates was 1.1% with the highest positive rates recorded in Iraq.

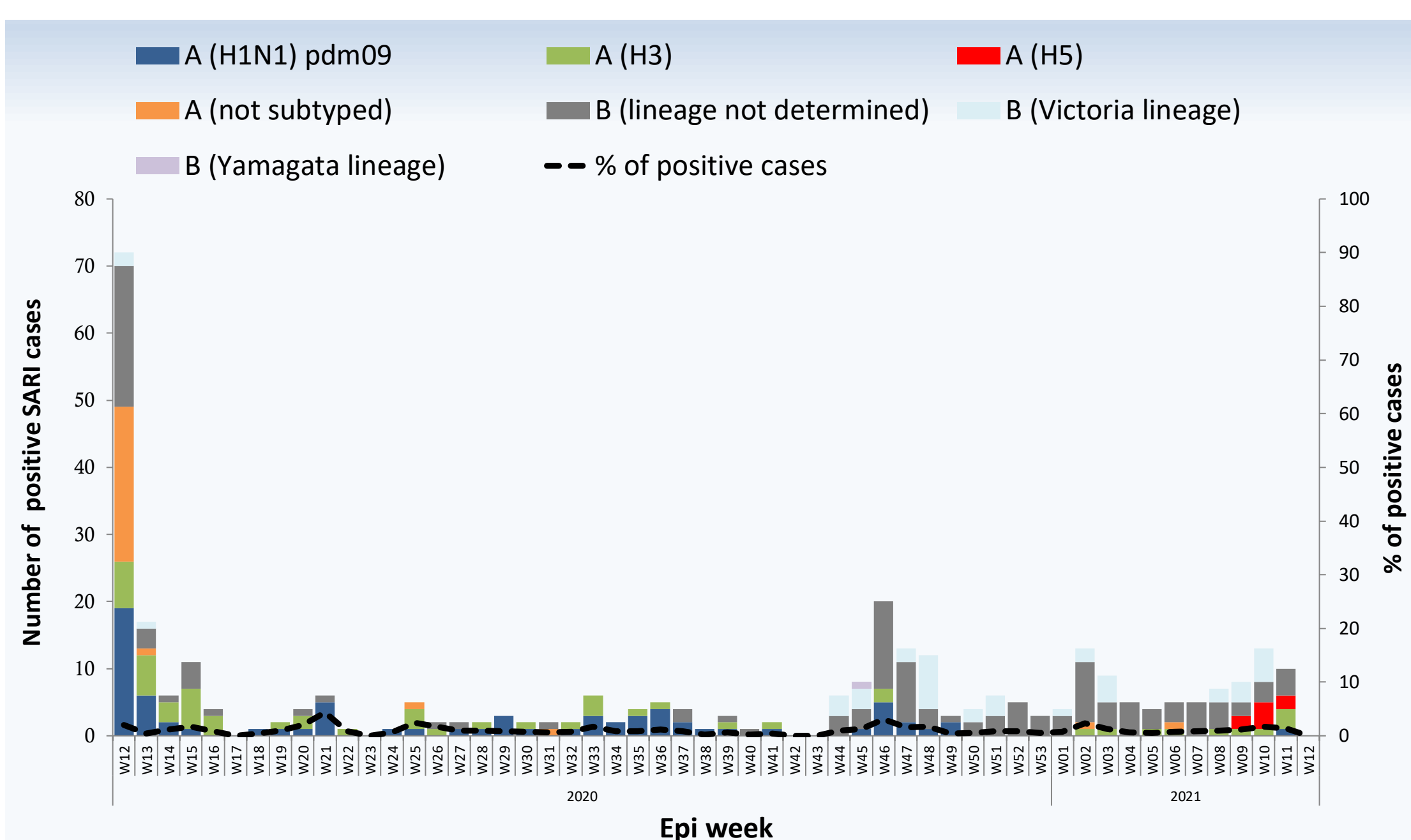
▪Of the viruses tested, 17 (55%) were influenza B viruses including 9 (29%) of lineage not determined and 8 (26%) of the Victoria lineage. On the other hand, 14 (45%) were influenza A viruses, including 8 (26%) of subtype A(H5), 5 (16%) of subtype A(H3), and one case (3%) of subtype A (H1N1) pdm09.

Source of data: FluNet and EMFLU

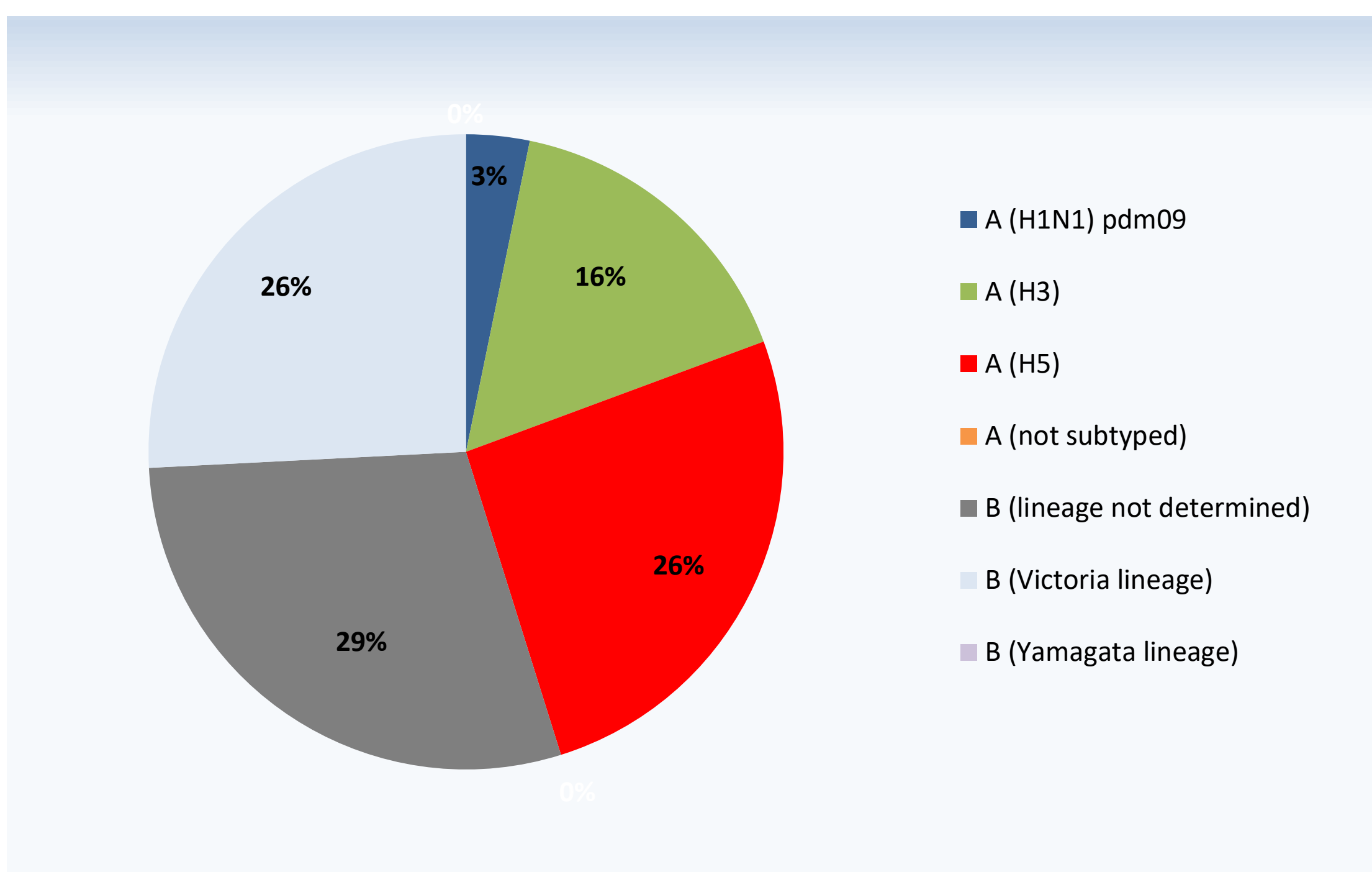


Disclaimer: The representation of material on the maps contained herein does not imply the expression of any opinion whatsoever on the part of the World Health Organization concerning the legal status of any country, territory, city or area or its authority of frontiers or boundaries. Dotted lines on maps represents approximate border lines for which there may not be full agreement.

**Figure 1. Influenza geographic spread during March 2021**



**Figure 2. Weekly positive cases of influenza by subtype, weeks 12/2020–2021**



**Figure 3. Circulating influenza viruses by sub-type during March 2021**

© World Health Organization 2021.

Some rights reserved. This work is available under the Creative Commons Attribution-Non Commercial-Share Alike 3.0 IGO license (CC BY-NC-SA 3.0 IGO); <https://creativecommons.org/licenses/by-nc-sa/3.0/igo/>.