



Trauma

11,992

Truma cases supported **



Nutrition

25

Stabilization centres are treating patients with severe acute malnutrition (SAM)

156

Patients with SAM with medical complications receiving treatment

827

Nutrition surveillance centres

135,793

Children under 5 screened



Integrated Management of Childhood Illness (IMCI)

259

Working health centers in IMCI

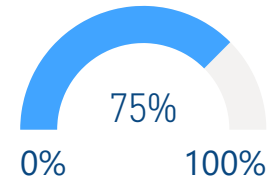
17,778

IMCI services



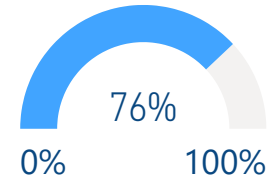
Immunization

DPT3 (under 1 y)



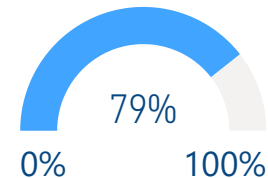
36,141

Measles 2 (1-2 y)



36,690

Polio 3 (under 1 y)



37,842



Mental Health

32,916

Mental health and psychosocial support interventions provided by NGOs

578

Health facilities and community centres providing MHPSS services

1,470

Schools providing MHPSS services Alerts



New borne care at home (NCH)

112

Health villages working in NCH

1,478

Home visits

13

Referred mothers and new born to specialized care



Neonatal resuscitation (NR):

42

Hospitals working in NR

6,039

New born

302

Referred new born to specialized care

*The data in this infographic are for WHO's hub in Damascus only

**Based on public hospital received support from WHO



Primary Health Care

7 DoH

Public PHC facilities/DoH received medical equipment and supplies directly by WHO

24

Rolled out DoH/SARC mobile medical teams/clinics



Health Information

124

Field visits (assessments, supervision, monitoring and evaluation)

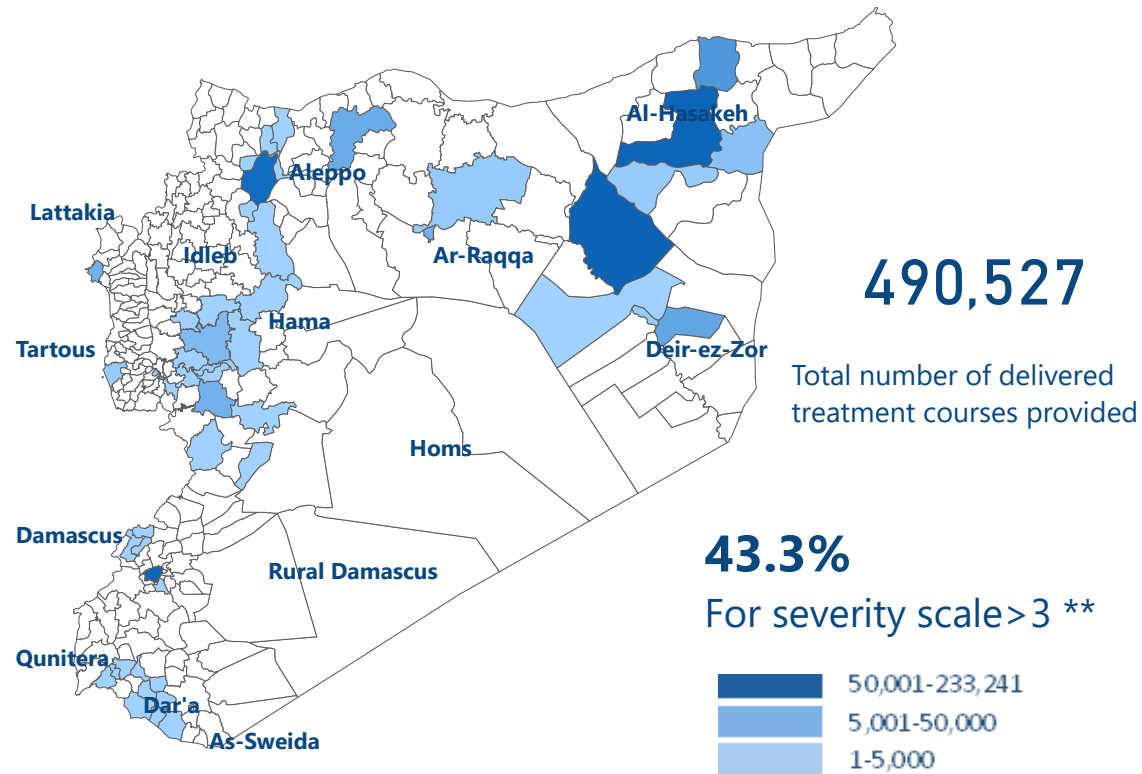


Secondary Health care

24

Hospitals supported directly by WHO with medical equipment and supplies*

Number of treatment courses provided at sub-district level

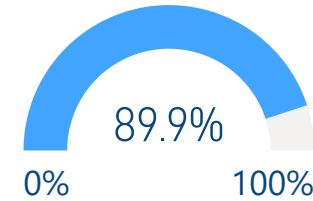


EWARS

1,370

Sentinel sites

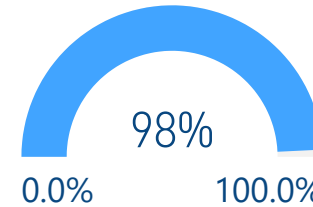
Sentinel sites submitting weekly surveillance reports



Top 5 reported morbidities

- 1-Influenza Like Illness
- 2-Acute Diarrhea
- 3-Lice
- 4-Suspected COVID-19
- 5-Leishmaniasis

Alerts investigated and responded to in a timely manner



Attacks on Health care

0

Number of Attacks

0

Health workers killed

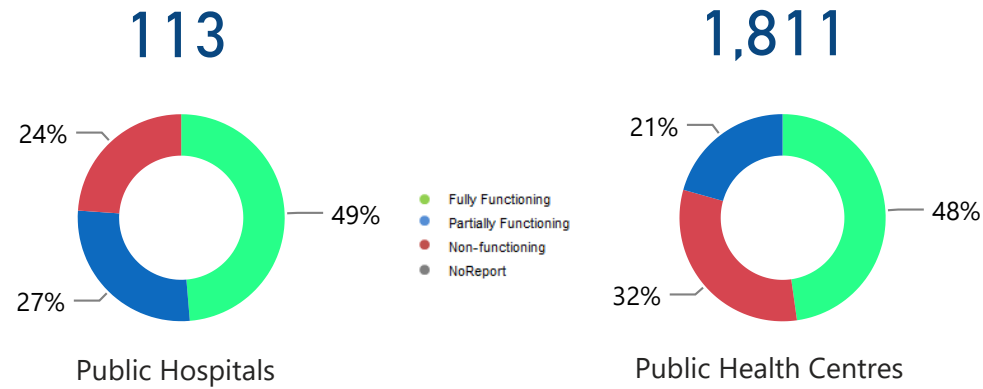
0

Health workers Injured

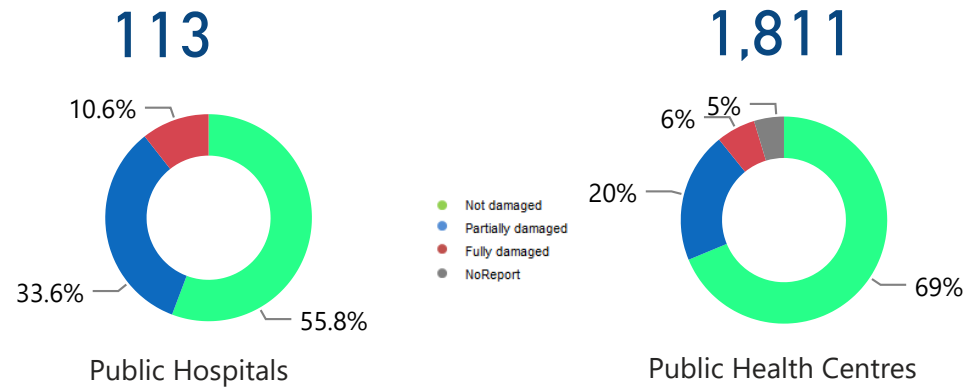
*Other undefined hospitals are supported indirectly throughout MoH and MoHE at central level

** Data source: Severity scale January 2020

HeRAMS : Functionality Status



HeRAMS : Level of damage



HeRAMS : Consultations



492,710
Public Hospitals



833,397
Public Health centres



Operations Support and logistic

72

Total number of regular deliveries across the country including IA convoys

123

Total weight (tons) of regular deliveries across the country including IA convoys



Total regular deliveries across the country

Total weight (tons) of supplies delivered **123**

72
Total number of regular deliveries

19
Medicines

12
Equipment

466,510
Total number of treatment courses delivered

59
Kits

33
Non-medical supplies (WASH, Nutriton, and others)



Inter-agency convoys

Total weight (tons) of supplies delivered **0**

0
Total number of IA convoys

0
Medicines

0
Equipment

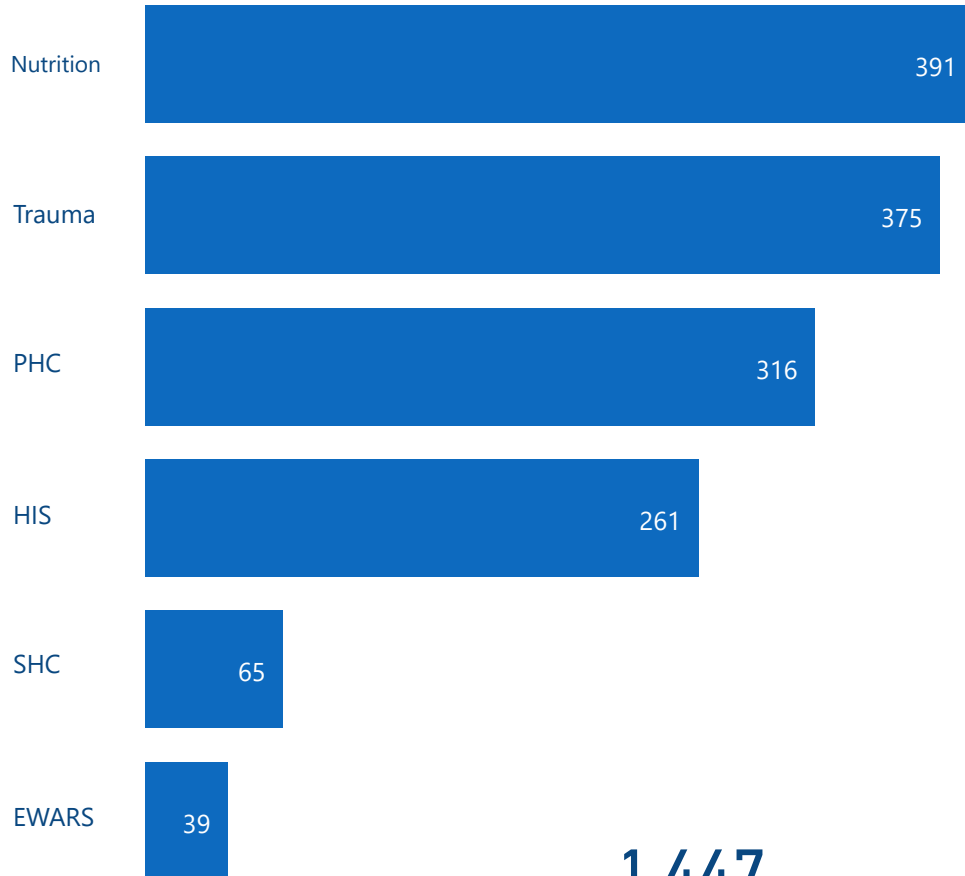
0
Total number of treatment courses delivered

0
Kits

0
Non-medical supplies (WASH, Nutriton, and others)



Health Care Providers Trained



1,447

Total of health care providers trained



National NGOs Coordination



12

National NGOs as implementing partners



53,065

PHC outpatient consultations provided by WHO partners



2

IDP camps/ settlements covered by WHO partners



9

Supported PHC centres by WHO implementing partners



24,017

Treatment courses provided by national NGOs



254

People with disabilities assisted by WHO partners



16

Mobile medical teams rolled out



3,481

Patients referred for specialized treatment



0

Beneficiaries from resilience activities (Quarterly)



4

Static medical points supported



252

Trauma cases supported by WHO partners



0

Beneficiaries of raising awareness activities (Quarterly)

The boundaries and names shown and the designations used on this map do not imply the expression of any opinion whatsoever on the part of the World Health Organization concerning the legal status of any country, territory, city or area or of its authorities, or concerning the delimitation of its frontiers or boundaries. Dotted and dashed lines on maps represent approximate border lines for which there may not yet be full agreement

Data source: WHO programs, 4Ws Map production: Health Information Management Unit, Country office, Syrian Arab Republic