



Trauma

16,201

Truma cases supported **



Nutrition

25

Stabilization centres are treating patients with severe acute malnutrition (SAM)

134

Patients with SAM with medical complications receiving treatment

827

Nutrition surveillance centres

96,563

Children under 5 screened



Integrated Management of Childhood Illness (IMCI)

254

Working health centers in IMCI

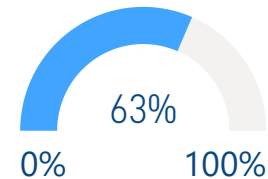
10,457

IMCI services



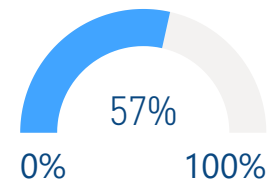
Immunization

DPT3 (under 1 y)



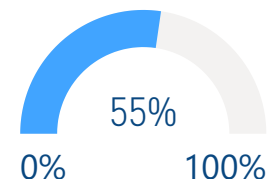
30,036

Measles 2 (1-2 y)



27,613

Polio 3 (under 1 y)



26,241



Mental Health

14,366

Mental health and psychosocial support interventions provided by NGOs

578

Health facilities and community centres providing MHPSS services

1,470

Schools providing MHPSS services Alerts



New borne care at home (NCH)

85

Health villages working in NCH

1,087

Home visits

25

Referred mothers and new born to specialized care



Neonatal resuscitation (NR):

41

Hospitals working in NR

5,965

New born

311

Referred new born to specialized care

*The data in this infographic are for WHO's hub in Damascus only

**Based on public hospital received support from WHO

Primary Health Care

3 DoH

Public PHC facilities/DoH received medical equipment and supplies directly by WHO

25

Rolled out DoH/SARC mobile medical teams/clinics

Health Information

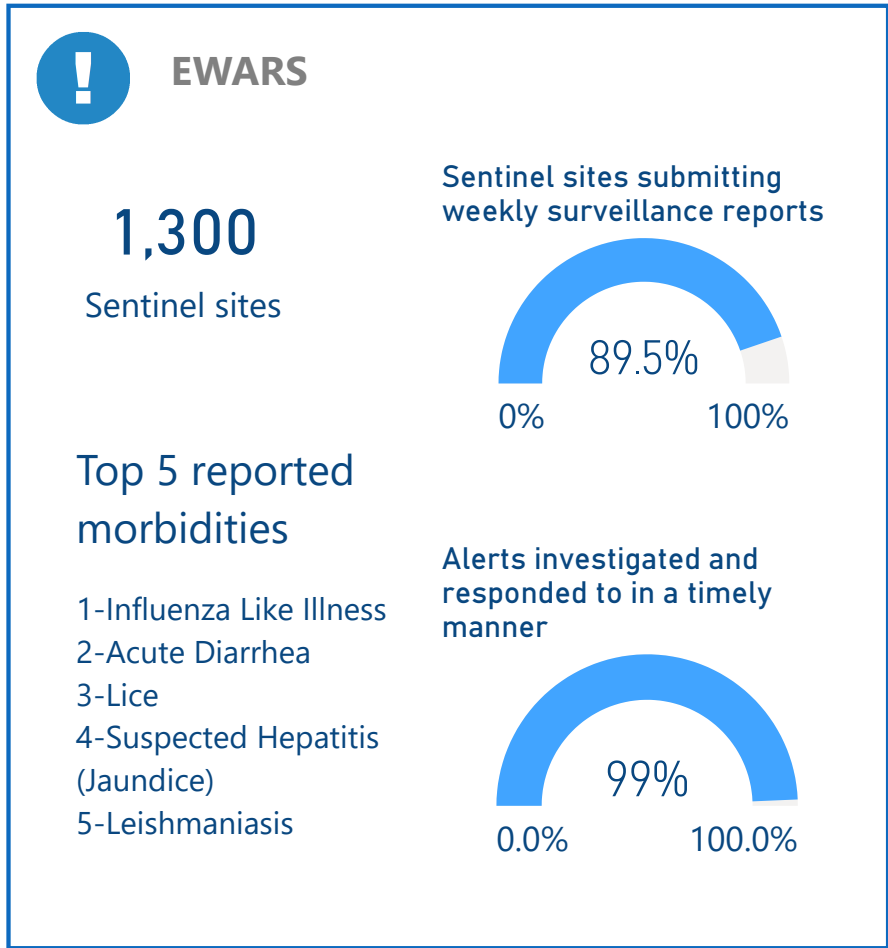
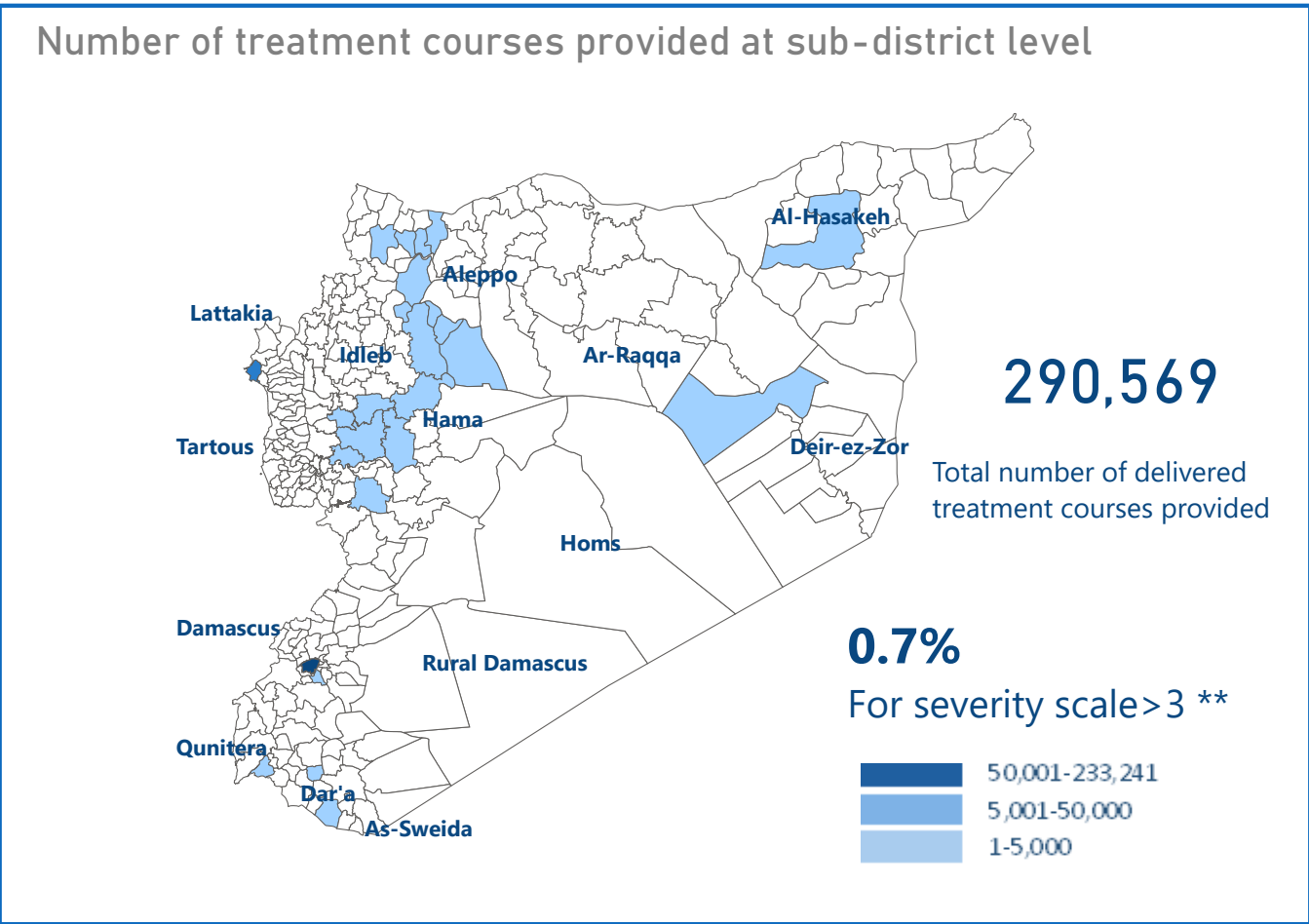
167

Field visits (assessments, supervision, monitoring and evaluation)

Secondary Health care

17

Hospitals supported directly by WHO with medical equipment and supplies*



Attacks on Health care

2

Number of Attacks

0

Health workers killed

0

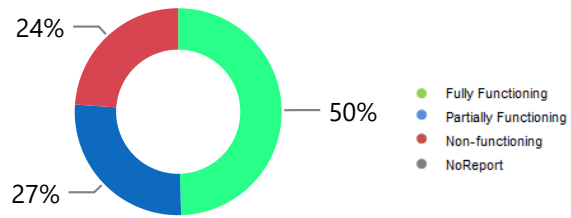
Health workers Injured

*Other undefined hospitals are supported indirectly throughout MoH and MoHE at central level

** Data source: Severity scale January 2020

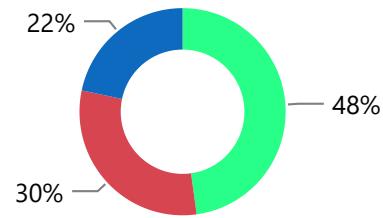
HeRAMS : Functionality Status

113



Public Hospitals

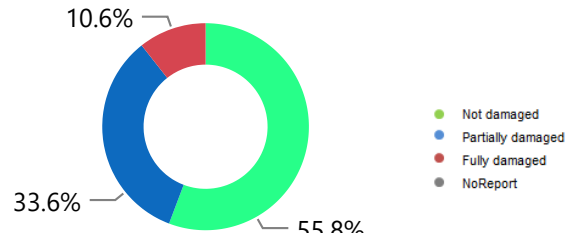
1,811



Public Health Centres

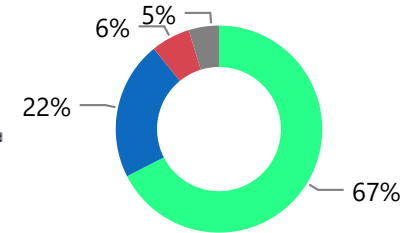
HeRAMS : Level of damage

113



Public Hospitals

1,811



Public Health Centres

HeRAMS : Consultations



579,219

Public Hospitals



1,010,068

Public Health centres



Operations Support and logistic

42

Total number of regular deliveries across the country including IA convoys

21

Total weight (tons) of regular deliveries across the country including IA convoys



Total regular deliveries across the country

42

Total number of regular deliveries

Total weight (tons) of supplies delivered **21**

4

Medicines

10

Equipment

3

Kits

4

Non-medical supplies (WASH, Nutriton, and others)

Total number of treatment courses delivered

280,975



Inter-agency convoys

0

Total number of IA convoys

Total weight (tons) of supplies delivered **0**

0

Medicines

0

Equipment

0

Kits

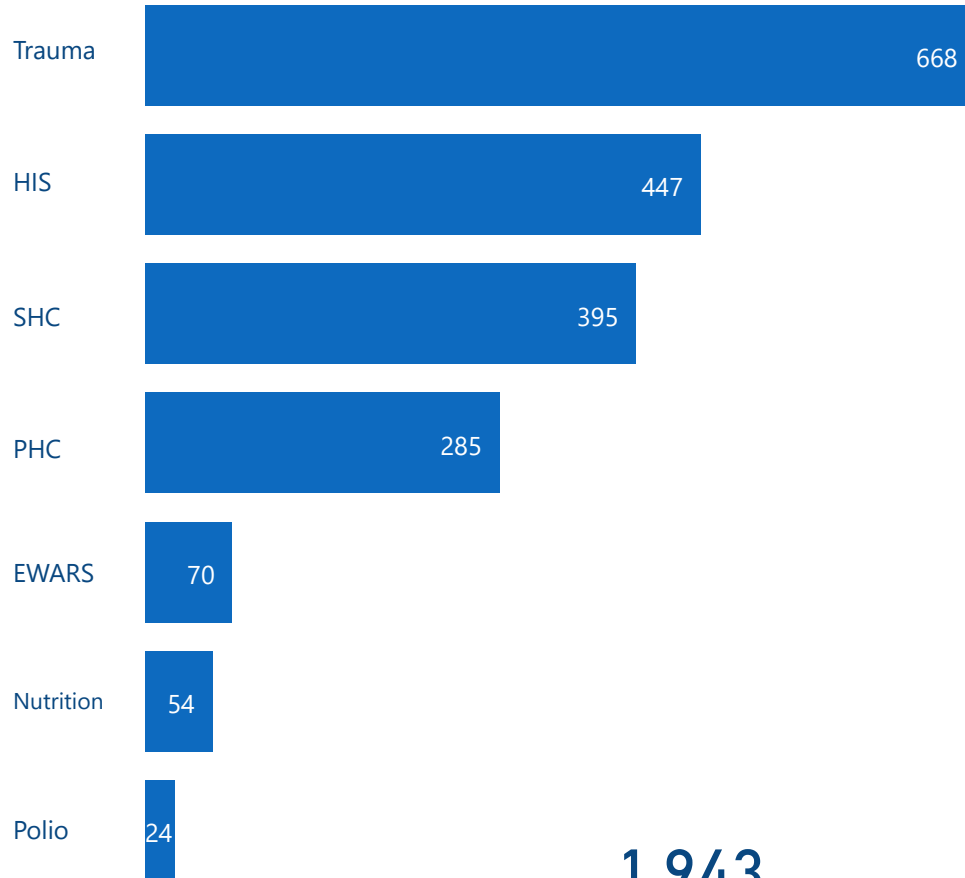
0

Non-medical supplies (WASH, Nutriton, and others)

Total number of treatment courses delivered



Health Care Providers Trained



1,943

Total of health care providers trained



National NGOs Coordination



17

National NGOs as implementing partners



41,140

PHC outpatient consultations provided by WHO partners



3

IDP camps/ settlements covered by WHO partners



6

Supported PHC centres by WHO implementing partners



9,594

Treatment courses provided by national NGOs



0

People with disabilities assisted by WHO partners



27

Mobile medical teams rolled out



1

Patients referred for specialized treatment



0

Beneficiaries from resilience activities (Quarterly)



10

Static medical points supported



0

Trauma cases supported by WHO partners



0

Beneficiaries of raising awareness activities (Quarterly)

The boundaries and names shown and the designations used on this map do not imply the expression of any opinion whatsoever on the part of the World Health Organization concerning the legal status of any country, territory, city or area or of its authorities, or concerning the delimitation of its frontiers or boundaries. Dotted and dashed lines on maps represent approximate border lines for which there may not yet be full agreement

Data source: WHO programs, 4Ws Map production: Health Information Management Unit, Country office, Syrian Arab Republic