



Trauma

3,122

Truma cases supported **



Nutrition

5

Stabilization centres are treating patients with severe acute malnutrition (SAM)

40

Patients with SAM with medical complications receiving treatment

33

Nutrition surveillance centres

6,064

Children under 5 screened



Integrated Management of Childhood Illness (IMCI)

20

Working health centers in IMCI

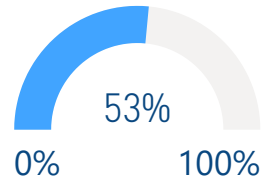
709

IMCI services



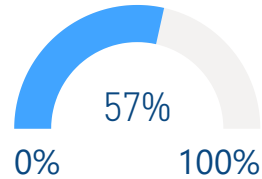
Immunization

DPT3 (under 1 y)



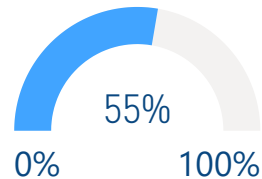
6,284

Measles 2 (1-2 y)



6,768

Polio 3 (under 1 y)



6,523



Mental Health

0

Mental health and psychosocial support interventions provided by NGOs

39

Health facilities and community centres providing MHPSS services

104

Schools providing MHPSS services Alerts



New borne care at home (NCH)

8

Health villages working in NCH

182

Home visits

0

Referred mothers and new born to specialized care



Neonatal resuscitation (NR):

2

Hospitals working in NR

568

New born

52

Referred new born to specialized care

*The data in this infographic are for WHO's hub in Damascus only

**Based on public hospital received support from WHO



Primary Health Care

2 DoH

Public PHC facilities/DoH received medical equipment and supplies directly by WHO

10

Rolled out DoH/SARC mobile medical teams/clinics



Health Information

19

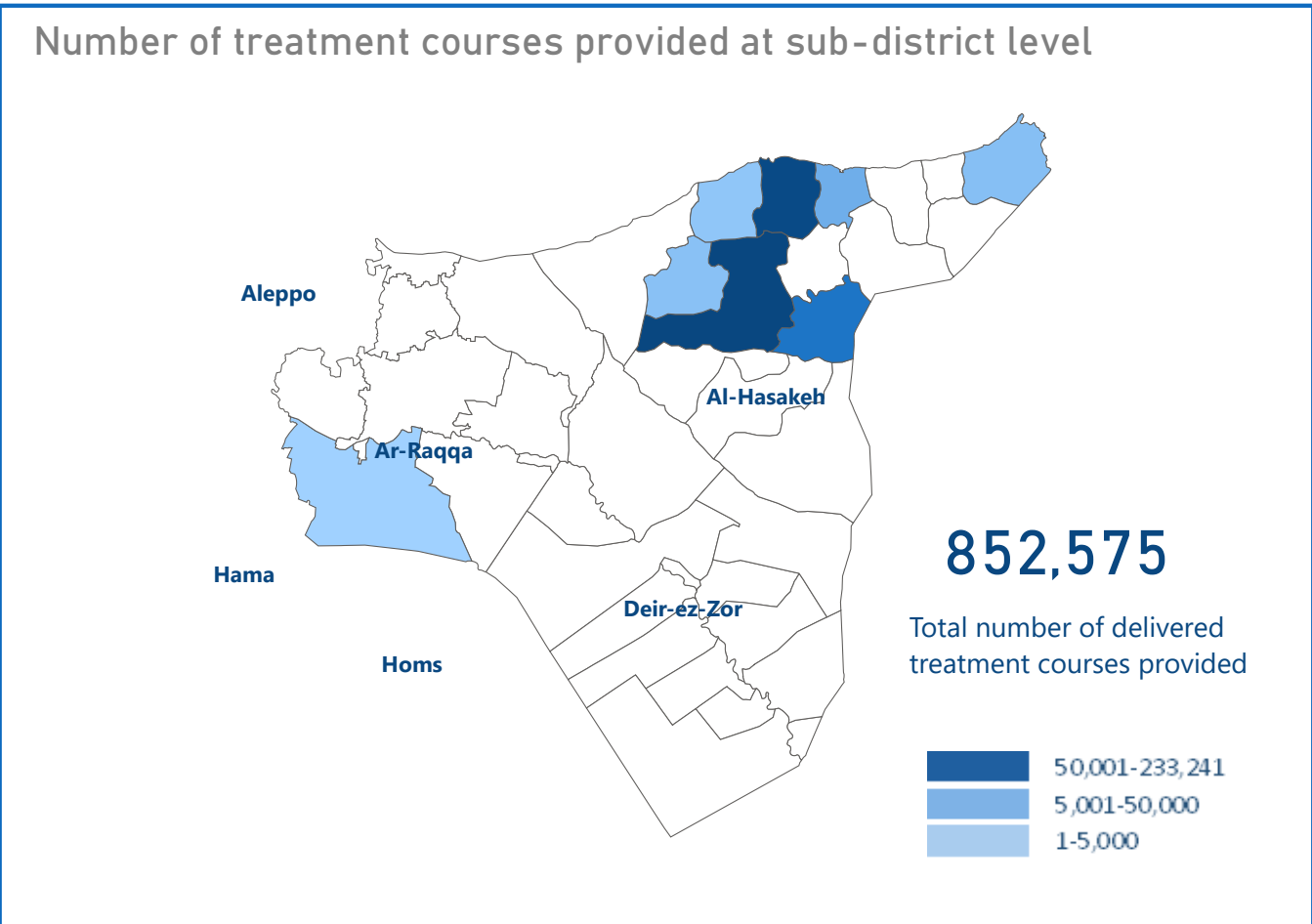

Field visits (assessments, supervision, monitoring and evaluation)



Secondary Health care

13

Hospitals supported directly by WHO with medical equipment and supplies*

EWARS

274

Sentinel sites

Sentinel sites submitting weekly surveillance reports: **87.59%**

Alerts investigated and responded to in a timely manner: **100%**

Top 5 reported morbidities

- 1-Acute Diarrhea
- 2-Influenza Like Illness
- 3-Suspected Hepatitis (Jaundice)
- 4-Typhoid Fever
- 5-Acute bloody diarrhea



Attacks on Health care

0

Number of Attacks

0

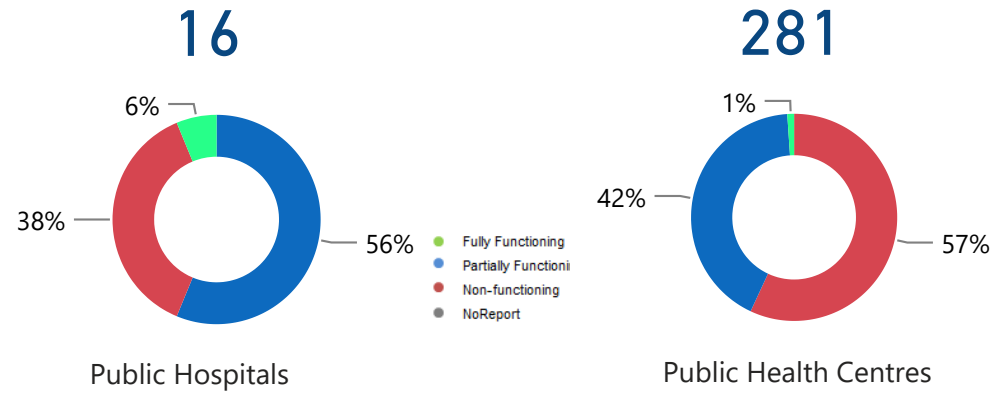
Health workers killed

0

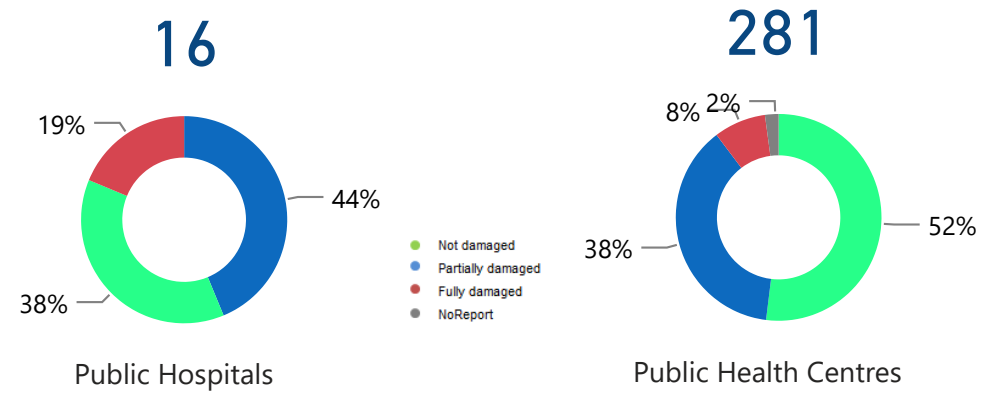
Health workers Injured

*Other undefined hospitals are supported indirectly throughout MoH and MoHE at central level

HeRAMS : Functionality Status



HeRAMS : Level of damage



HeRAMS : Consultations



56,877
Public Hospitals



97,099
Public Health centres



Operations Support and logistic

24

Total number of regular deliveries across the country including IA convoys

63

Total weight (tons) of regular deliveries across the country including IA convoys



Total regular deliveries across the country

Total weight (tons) of supplies delivered **63**

24
Total number of regular deliveries

852,575
Total number of treatment courses delivered

0 Medicines	0 Equipment
60 Kits	3 Non-medical supplies (WASH, Nutriton, and others)



Inter-agency convoys

Total weight (tons) of supplies delivered **0**

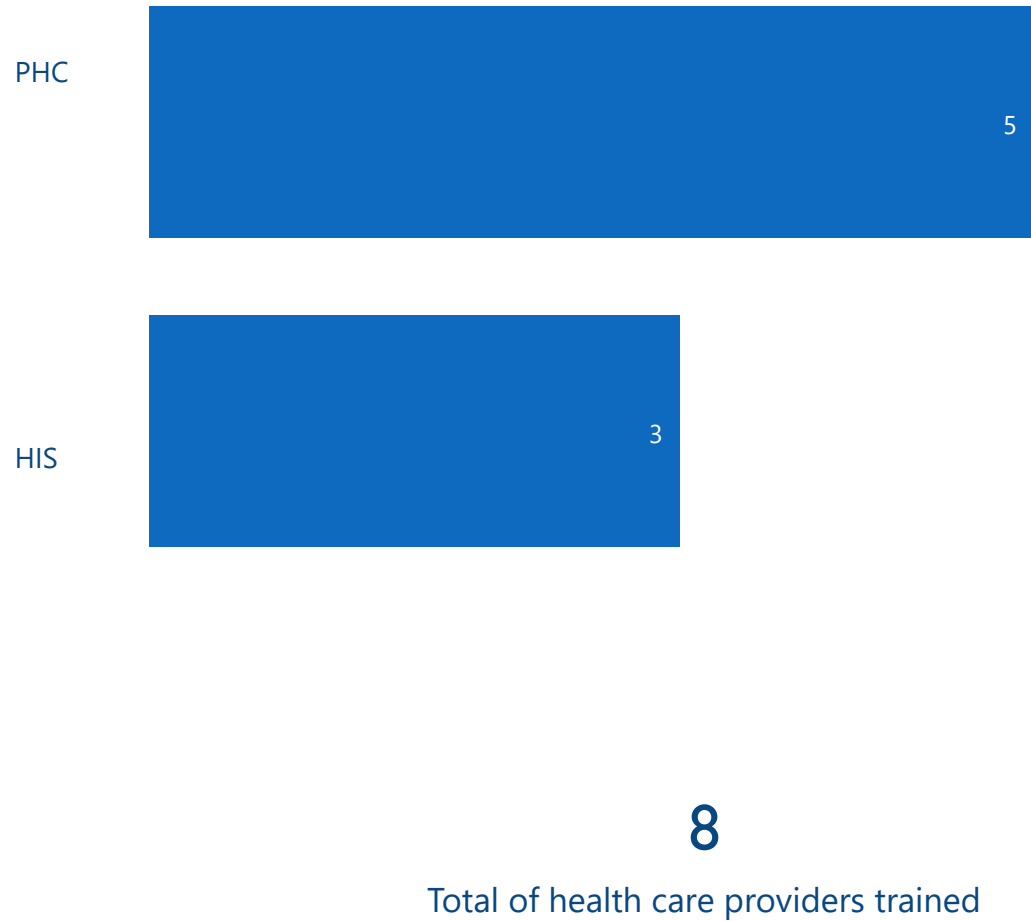
0
Total number of IA convoys

0
Total number of treatment courses delivered

0 Medicines	0 Equipment
0 Kits	0 Non-medical supplies (WASH, Nutriton, and others)



Health Care Providers Trained



National NGOs Coordination



2
National NGOs as implementing partners



0
PHC outpatient consultations provided by WHO partners



0
IDP camps/ settlements covered by WHO partners



0
Supported PHC centres by WHO implementing partners



0
Treatment courses provided by national NGOs



0
People with disabilities assisted by WHO partners



0
Mobile medical teams rolled out



0
Patients referred for specialized treatment



0
Beneficiaries from resilience activities (Quarterly)



0
Static medical points supported



0
Trauma cases supported by WHO partners



0
Beneficiaries of raising awareness activities (Quarterly)

The boundaries and names shown and the designations used on this map do not imply the expression of any opinion whatsoever on the part of the World Health Organization concerning the legal status of any country, territory, city or area or of its authorities, or concerning the delimitation of its frontiers or boundaries. Dotted and dashed lines on maps represent approximate border lines for which there may not yet be full agreement

Data source: WHO programs, 4Ws Map production: Health Information Management Unit, Country office, Syrian Arab Republic