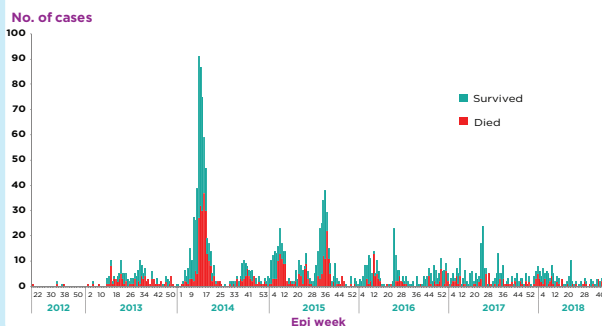


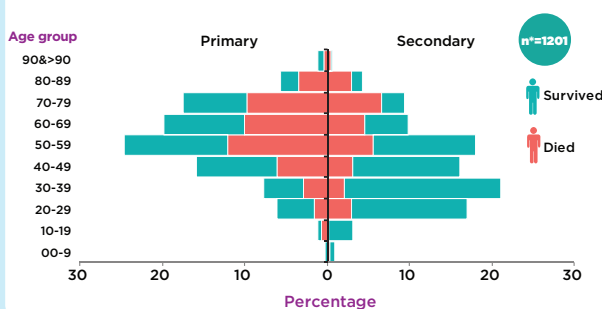
HIGHLIGHTS

- At the end of September 2018, a total of 2260 laboratory-confirmed cases of Middle East respiratory syndrome (MERS), including 803 associated deaths (case-fatality rate: 35.5%) were reported globally; the majority of these cases were reported from Saudi Arabia (1882 cases, including 729 related deaths with a case-fatality rate of 38.7%).
- During the month of September, a total of 14 laboratory-confirmed cases of MERS were reported globally; 13 laboratory-confirmed cases were reported in Saudi Arabia, including 6 associated deaths, and 1 laboratory-confirmed case was reported in Republic of Korea. The cases from Saudi Arabia included five secondary infections; two symptomatic household contacts and three hospital acquired infections.
- The demographic and epidemiological characteristics of reported cases, when compared during the same corresponding period of 2013 to 2018, do not show any significant difference or change. Owing to improved infection prevention and control practices in hospitals, the number of hospital-acquired cases of MERS has dropped significantly since 2015.
- The age group 50–59 years continues to be at highest risk for acquiring infection of primary cases. The age group 30–39 years is most at risk for secondary cases. The number of deaths is higher in the age group 50–59 years for primary cases and 70–79 years for secondary cases.

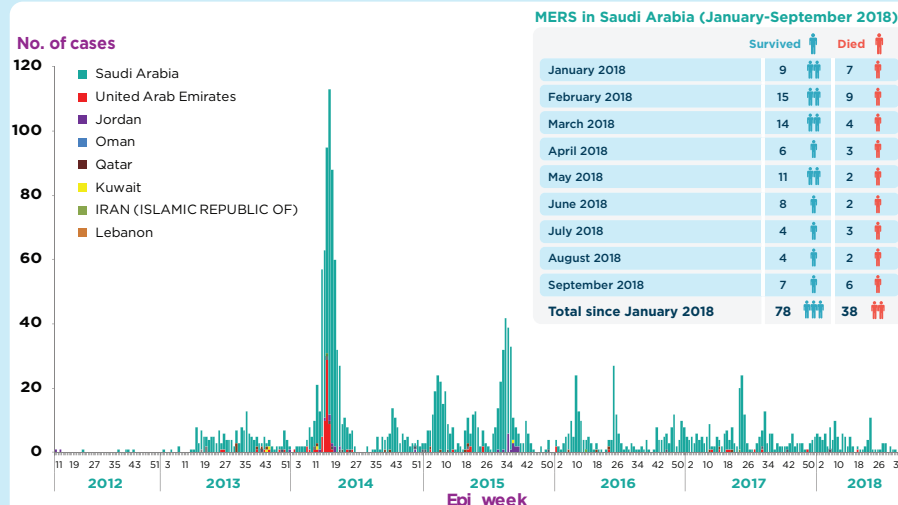
MERS cases reported from the Kingdom of Saudi Arabia by week of symptoms onset, June 2012–September 2018



Age and fatality distribution of Primary and Secondary cases of MERS reported from Saudi Arabia, 2012–September 2018



Laboratory-confirmed cases of MERS reported in Eastern Mediterranean Region, April 2012–September 2018



Epidemiological characteristics of MERS cases reported globally between April–September 2013 and April–September 2018

Characteristic	Apr-Sep 13	Apr-Sep 14	Apr-Sep 15	Apr-Sep 16	Apr-Sep 17	Apr-Sep 18
Number	123	520	275	89	142	58
Median age in years	50	47	54	52	48	55
Gender (% male)	59	60	65	62	68	88
% of primary cases	20	21	9	37	20	33
% of secondary cases	66	41	56	29	54	31
(%) of unknown contact history	14	36	3	10	1	2
% of HCW	18	28	16	24	28	2
% of Fatal	49	40	40	20	24	31

Characteristics of MERS cases reported from Kingdom of Saudi Arabia, June 2012–September 2018

Type of case	2012	2013	2014	2015	2016	2017	2018	Grand Total
Primary	3	36	164	52	74	71	39	439
Secondary	2	93	264	222	60	90	30	761
Missing		1	15	102	103	68	51	340
Unknown		28	219	78	11	5	1	342
Total	5	158	662	454	248	234	121	1882

SUMMARY

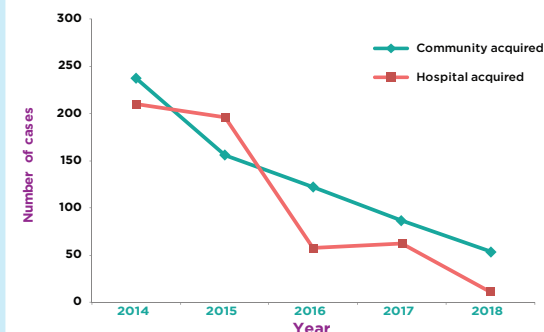
2260 Laboratory-confirmed Cases Reported Since April 2012

803 deaths reported since April 2012

27 countries reported cases globally

12 countries reported cases since April 2012 in the Eastern Mediterranean Region

Community versus hospital acquired (symptomatic) MERS cases in Eastern Mediterranean Region, Jan 2014–Sep 2018



Cases of MERS in healthcare workers reported from Saudi Arabia Jan 2013–Sep 2018

