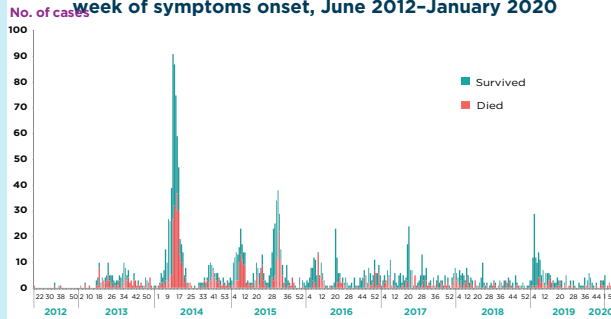


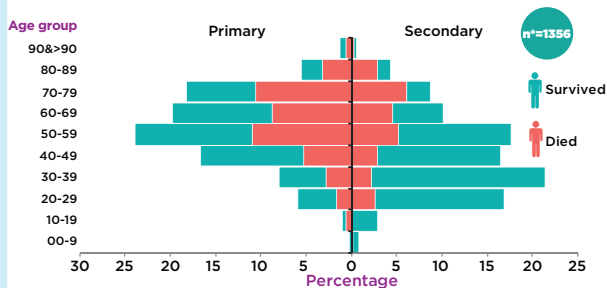
HIGHLIGHTS

- At the end of January 2020, a total of 2519 laboratory-confirmed cases of Middle East respiratory syndrome (MERS), including 966 associated deaths (case-fatality rate: 34.3%) were reported globally. The majority of these cases were reported from Saudi Arabia (2121 cases), including 788 related deaths with a case-fatality rate of 37.1%.
- Since the last update was published (December MERS situation update), a total of 17 new laboratory-confirmed cases of MERS were reported globally. Two of the cases were reported from the United Arab Emirates, both males, with a history of exposure to camels and their products. The other 15 cases were reported from Saudi Arabia with five associated deaths. The deaths occurred among patients aged 45-85 years with comorbidities. They have no clear history of exposure to any of the known risk factors.
- A hospital outbreak was reported in Saudi Arabia with a cluster of six cases. Three of the cases were health care workers, two were patients (one of whom died) and one was a visitor. The source of infection of the first case reported in the cluster is currently unknown and under investigation. Investigation of household and hospital contacts revealed no further secondary cases.
- The demographic and epidemiological characteristics of reported cases, when compared with the same corresponding periods in 2014-2020, do not show any significant difference or change. The number of cases reported in this period was less than all other corresponding periods.
- The age group 50-59 years continues to be at the highest risk for acquiring infection as primary cases. The age group 30-39 years is most at risk for secondary infections. The number of deaths is higher in the age group 50-59 years for primary cases and 70-79 years for secondary cases.

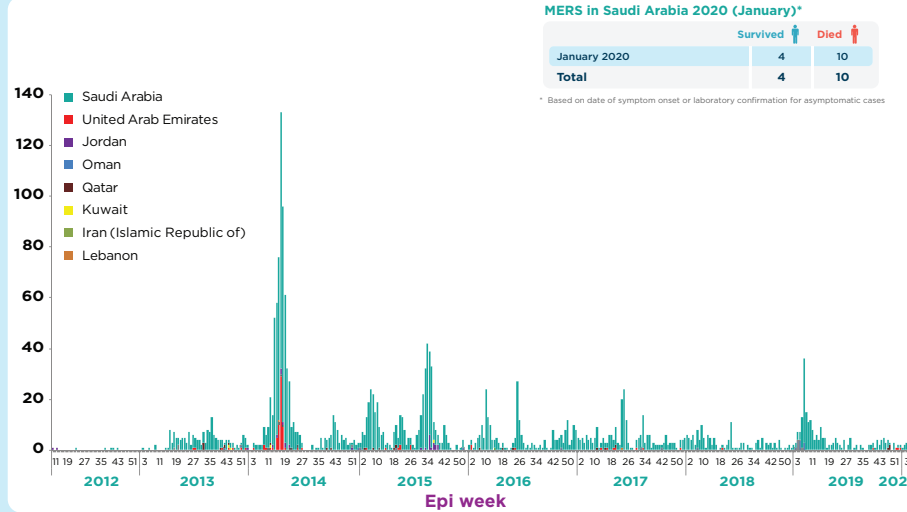
MERS cases reported from the Kingdom of Saudi Arabia by week of symptoms onset, June 2012-January 2020



Age and fatality distribution of primary and secondary cases of MERS reported from Saudi Arabia, 2012-January 2020



Laboratory-confirmed cases of MERS reported in the Eastern Mediterranean Region, July 2012-January 2020



MERS in Saudi Arabia 2020 (January)*

	Survived	Died
January 2020	4	10
Total	4	10

* Based on date of symptom onset or laboratory confirmation for asymptomatic cases

Epidemiological characteristics of MERS cases reported globally between August-January 2014 and August-January 2020

Characteristic	Aug 14-Jan 15	Aug 15-Jan 16	Aug 16-Jan 17	Aug 17-Jan 18	Aug 18-Jan 19	Aug 19-Jan 20
Number	130	240	107	106	68	59
Median age in years	55	53	56	52	56	57
Gender (% male)	78	61	77	71	82	76
% of primary cases	40	10	75	58	51	43
% of secondary cases	33	83	21	42	47	20
(%) of unknown contact history	27	6	4	0	2	38
% of HCW	12	18	5	8	0	8
% of Fatal	45	34	33	35	25	27

Characteristics of MERS cases reported from Kingdom of Saudi Arabia, June 2012-January 2020

Type of case	2012	2013	2014	2015	2016	2017	2018	2019	2020	Grand Total
Primary	3	36	164	52	75	70	54	57	1	512
Secondary	2	93	264	222	60	90	35	75	3	844
Missing		1	15	102	103	68	52	57	10	408
Unknown		28	219	78	11	5	1	15		357
Total	5	158	662	454	249	233	142	204	14	2121

SUMMARY

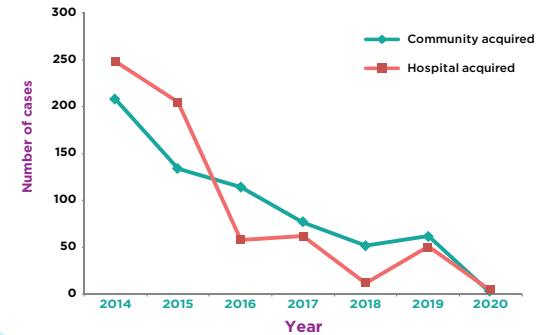
2519 Laboratory-confirmed cases reported since April 2012

866 deaths reported since April 2012

27 countries reported cases globally

12 countries reported cases since April 2012 in the Eastern Mediterranean Region

Community versus hospital acquired (symptomatic) MERS cases in Eastern Mediterranean Region, Jan 2014-Jan 2020



Cases of MERS in healthcare workers reported from Saudi Arabia, Jan 2013-Jan 2020

