

# PUBLIC HEALTH MEASURES FOR STEPPING UP NATIONAL PREPAREDNESS

- Countries with widespread and intense transmission:

**Guinea, Liberia, Sierra Leone**

- Countries with an initial case or cases, or with localized transmission:

**Nigeria, Senegal, Spain, United States of America**

**Ebola** was first identified in 1976



As of October 2014

> **8000** cases

> **4600** deaths



## Possible scenarios for introduction of Ebola

in the WHO Eastern Mediterranean Region

### a Air

The risk of transmission of Ebola through international travel by air is presumed to be low but, in all likelihood, this would be the most probable route for the introduction of Ebola into countries of the Region



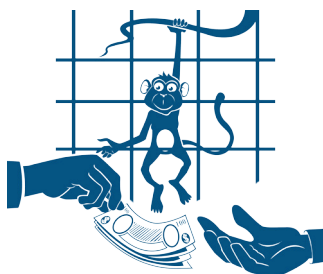
### b By land or sea

This carries a low risk



### c Trade in animals

This carries a low risk



**Silent importation and cases appearing in health facilities**



# PUBLIC HEALTH MEASURES FOR EARLY DETECTION AND PREVENTION OF TRANSMISSION

## 1 Strengthening leadership and coordination



Set up an intersectoral coordination mechanism for:

- information sharing
- periodic risk assessment
- managing the national and international operational response should cases occur

## Screening at points of entry as required under the International Health Regulations (IHR 2005)

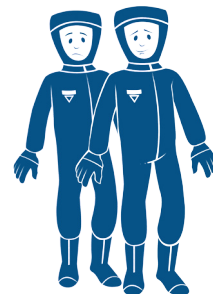
2



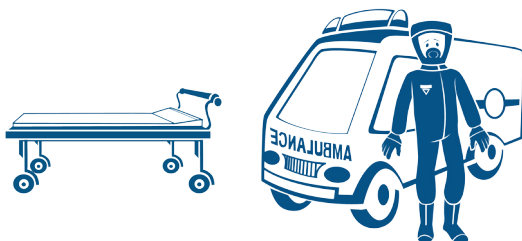
Increase awareness of points of entry (POE) officials



Reinforce the team managing the screening of arriving passengers



Ensure that POE officials are appropriately trained for assessment, screening, detection and handling of any suspected Ebola case



Ensure availability of measures for isolation of suspected cases for investigation and management



Ensure there is effective coordination for information sharing and reporting between designated POE officials and the Ministry of Health

## PUBLIC HEALTH MEASURES FOR EARLY DETECTION AND PREVENTION OF TRANSMISSION

3

### Enhancing surveillance for contact tracing and monitoring

a



Watch contacts for symptoms of sickness for 21 days

Conduct surveillance for clusters of unexplained deaths or febrile illness in all countries

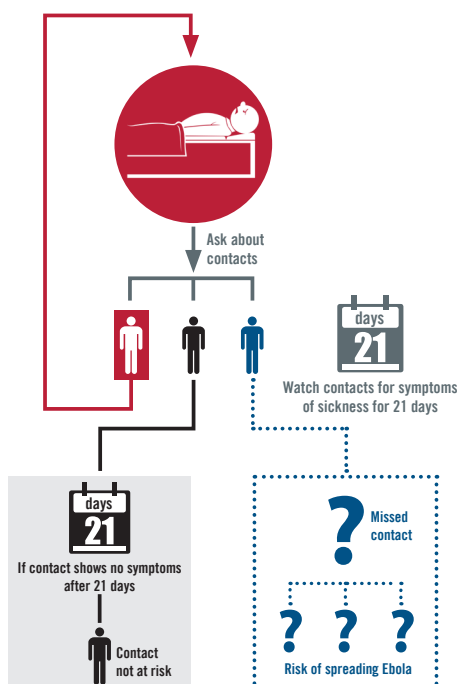
b



Disseminate case definition of Ebola to all health care facilities

c

Develop a protocol for contact tracing



d

Train staff on field epidemiology, investigation, contact tracing and data management





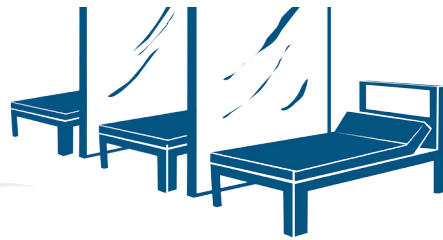
# PUBLIC HEALTH MEASURES FOR EARLY DETECTION AND PREVENTION OF TRANSMISSION

4

## Reinforcing infection control precautions in health care settings

a

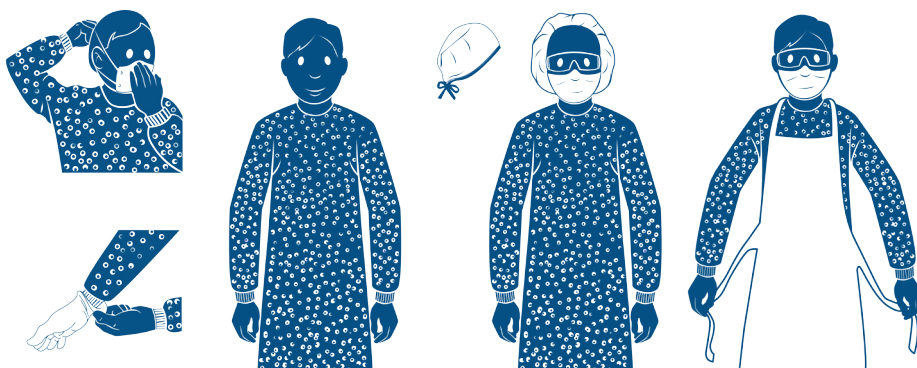
Identify, designate and establish (where necessary)  
appropriate isolation units for patient care



b

Ensure availability of  
sufficient quantities  
of personal protective  
equipment (PPE) and other  
disinfectant materials at  
point of care

c



Ensure that health care workers are appropriately trained on the use of PPE and have practised putting them on and taking them off correctly, and they have been trained on other barrier nursing practices for care of Ebola patients in health care facilities

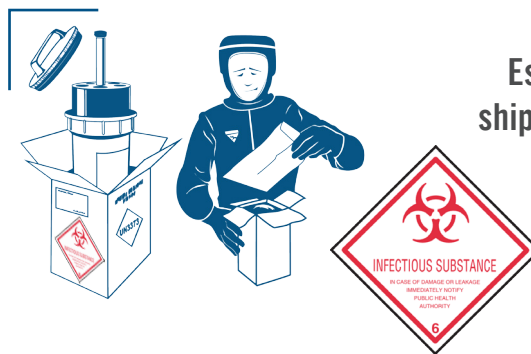
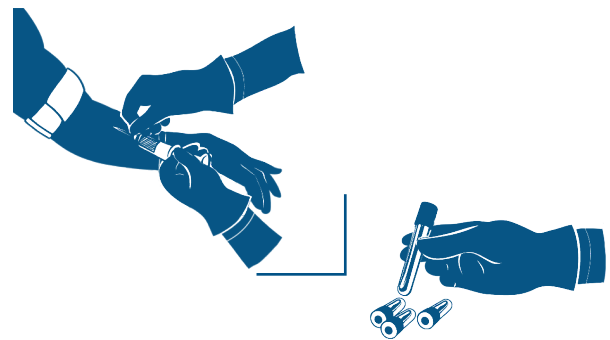
# PUBLIC HEALTH MEASURES FOR EARLY DETECTION AND PREVENTION OF TRANSMISSION

**5**

## Improving access to quality diagnostic testing and rapid turnaround of results

**a**

Train staff on collection, storage and transportation of samples from suspected cases and deactivation of specimens ensuring application of appropriate bio-security measures



Establish a process for rapid shipment of specimens to WHO reference laboratories

**b**

**c**

Ensure capacity to perform routine diagnostic testing



# PUBLIC HEALTH MEASURES FOR EARLY DETECTION AND PREVENTION OF TRANSMISSION

6

## Improving social mobilization and risk communication for Ebola

