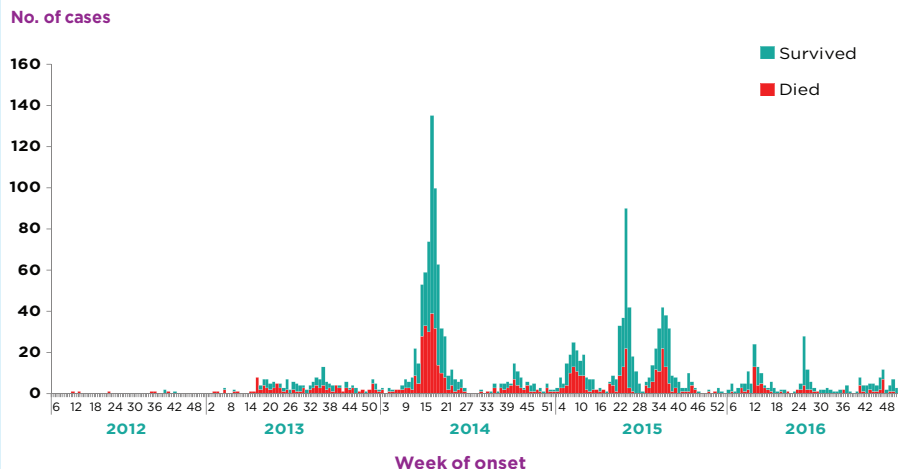


HIGHLIGHTS

- At the end of December 2016, a total of 1878 laboratory-confirmed cases of Middle East respiratory syndrome coronavirus (MERS-CoV), including 686 deaths (case-fatality rate: 36.5%) were reported globally; of these, Saudi Arabia reported a total of 1522 laboratory-confirmed cases, including 617 deaths (case-fatality rate: 40.5%).
- During the months of November and December, an increase in the number of primary cases was observed in Saudi Arabia compared to the previous month, as well as during the same period in 2015. In November, 2016, a total of 27 laboratory-confirmed cases, including 9 deaths (case-fatality rate: 40%) were reported, while in December a total of 21 laboratory-confirmed cases, including 6 deaths were reported from Saudi Arabia. No hospital outbreak was reported during the last 2 months of 2016. Despite this increase in primary cases, no significant increase in secondary cases or any difference in demographic or epidemiological characteristics of the cases were observed.
- The demographic and epidemiological characteristics of the cases reported between January and December 2016 do not show any significant difference when compared with cases reported during the same period from 2012 to 2015.
- The age group of those aged 50-59 years continues to be the group at highest risk for acquiring infection as primary cases for both males and females. However, the females in the age group of 20-29 and 30-39 are acquiring MERS infection in higher numbers when compared to males in the same age group.

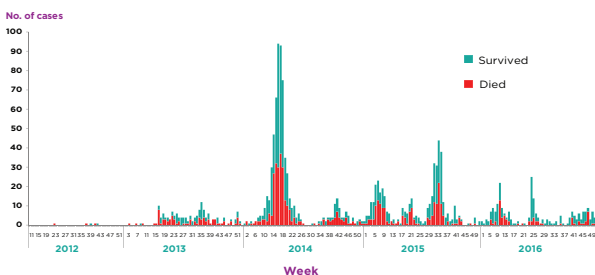
Laboratory-confirmed cases of MERS reported worldwide, April 2012-December 2016



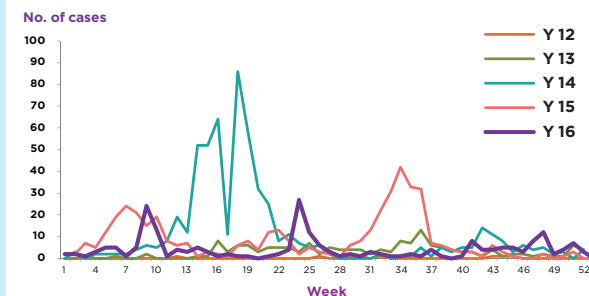
SUMMARY

- 1,878** Laboratory-confirmed Cases Reported Since April 2012
- 686** deaths reported from MERS since April 2012
- 27** countries reported MERS cases globally
- 12** countries reported MERS since April 2012 in the Eastern Mediterranean Region

MERS cases reported from the Kingdom of Saudi Arabia by week of symptoms onset, June 2012- December 2016



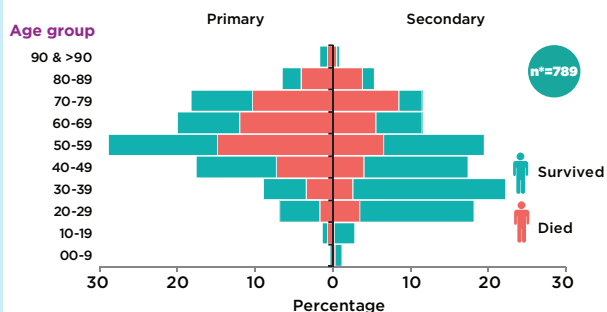
MERS cases reported from KSA by year, 2012-2016



Epidemiological characteristics of MERS cases reported globally between Jan-December in 2013 and in 2016

Characteristic	Jan-Dec 2013	Jan-Dec 2014	Jan-Dec 2015	Jan-Dec 2016
Number	188	758	672	251
Median age in years	51	48	54	54
Gender (% male)	65	65	65	74
% of primary cases	23	22	9	30
% of secondary cases	53	41	40	22
(%) unknown contact history	24	31	13	4
% HCW	20	26	10	14
% Fatal	53	38	33	29

Age and fatality distribution of Primary and Secondary cases of MERS reported from Saudi Arabia, 2012-December 2016



Characteristics of MERS cases reported from Kingdom of Saudi Arabia, 2012-2016

Type of case	2012	2013	2014	2015	2016	Grand Total
Primary	3	36	165	51	66	321
Secondary	2	93	263	222	56	636
Unknown source		30	221	79	11	341
Not reported		1	15	102	106	224
Total	5	160	664	454	239	1522

Characteristics of MERS cases reported from Kingdom of Saudi Arabia between 2012 to 2016

