

## **Module 3**

# **HIV testing and counselling and ethics**

# **HIV basic knowledge and stigma reduction in health care settings**



# Module goals

## Module 3: HIV testing and counselling and ethics

### Module 1

Participants will be able to:

- offer an insight into the epidemiological situation in the country and worldwide
- present the HIV transmission modes and the broad approaches to prevention
- implement post-exposure prophylaxis for HIV in the health care environment.

### Module 2

Participants will be able to:

- describe the natural history of the HIV infection
- expose the main circumstances in which the HIV infection is discovered
- describe some of the clinical manifestations of the HIV/AIDS infection.

### Module 3

Participants will be able to:

- name the techniques used for the biological diagnosis of the HIV infection
- argue the need to comply with ethical and confidentiality imperatives in the health care environment
- name the interventions to reduce HIV stigma and discrimination in health care settings.

### Module 4

Participants will be able to:

- inform a PLHIV about how care is organized in the country
- inform a PLHIV about the principles of care
- inform parents about the care available for a newborn baby, infant or child infected by HIV
- argue the need for optimal adherence to antiretroviral therapy.



## Module 3: HIV testing and counselling and ethics

### Module 1

Participants will be able to:

- offer an insight into the epidemiological situation in the country and worldwide
- present the HIV transmission modes and the broad approaches to prevention
- implement post-exposure prophylaxis for HIV in the health care environment.

### Module 2

Participants will be able to:

- describe the natural history of the HIV infection
- expose the main circumstances in which the HIV infection is discovered
- describe some of the clinical manifestations of the HIV/AIDS infection.

### Module 3

Participants will be able to:

- name the techniques used for the biological diagnosis of the HIV infection
- argue the need to comply with ethical and confidentiality imperatives in the health care environment
- name the interventions to reduce HIV stigma and discrimination in health care settings.

### Module 4

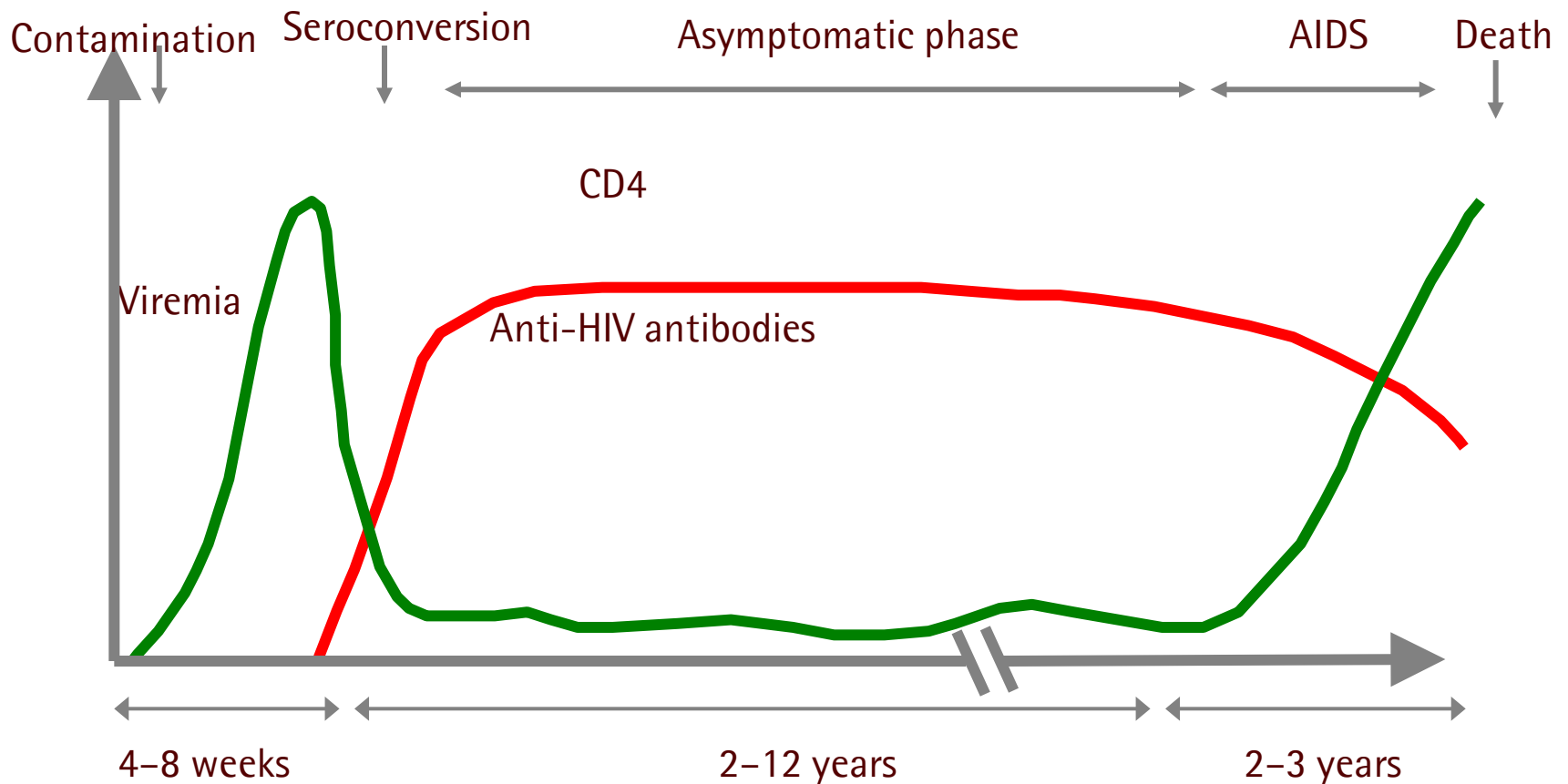
Participants will be able to:

- inform a PLHIV about how care is organized in the country
- inform a PLHIV about the principles of care
- inform parents about the care available for a newborn baby, infant or child infected by HIV
- argue the need for optimal adherence to antiretroviral therapy.

# Laboratory diagnosis of HIV infection



# Evolution of serovirological parameters during HIV infection



## **HIV screening**

- **Negative test:** The subject has not been infected by HIV
- **Positive test:** Confirmation required

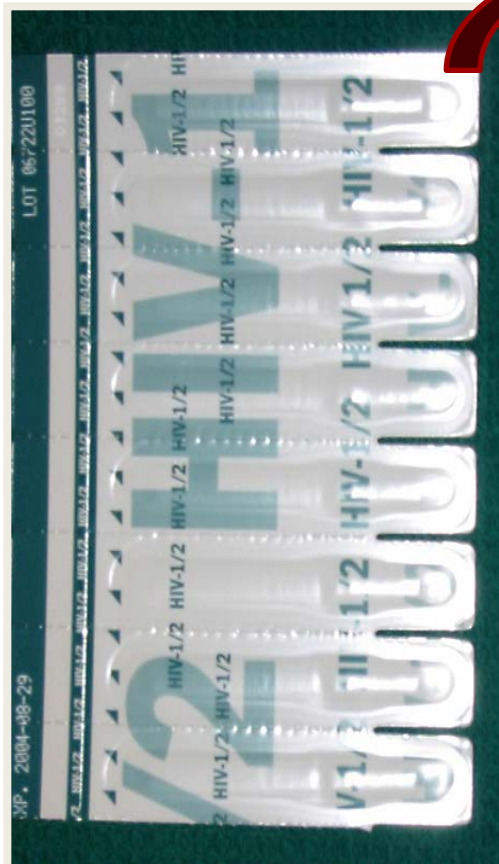
## ELISA





## Module 3: HIV testing and counselling and ethics

### Rapid tests



8 rapid tests



Positive



Negative

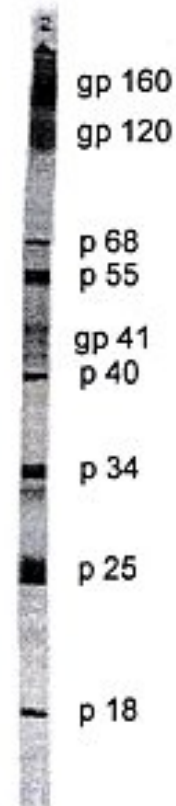


Invalid

## Confirmation by Western blot



Negative  
Western blot



Positive  
Western blot



# Other means of diagnosis

- P24 antigenemia
  - Earlier diagnosis
  - 15 days after contamination
  - Integrated into fourth generation screening tests
- Viral load (PCR)
- Proviral DNA test (PCR)

# **Testing strategy at country level**