



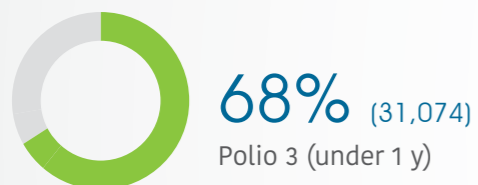
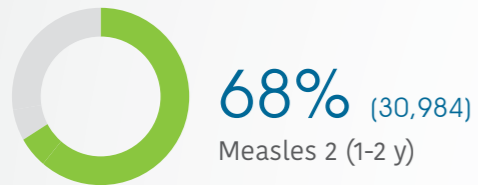
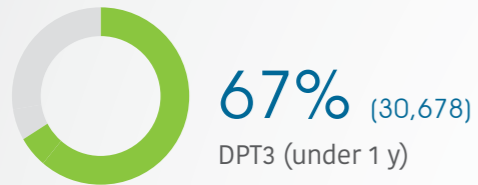
Trauma

26,711

Trauma cases supported**



Immunization (coverage rate)



Mental Health

30,668

Mental health and psychosocial support interventions provided by NGOs

578

Health facilities and community centres providing MHPSS services

Attacks



3

Attacks



0

Health workers killed or injured



Nutrition

20

Stabilization centres are treating patients with severe acute malnutrition (SAM) with medical complications

99

Patients with SAM with medical complications receiving treatment

796

Nutrition surveillance centres

117,413

Children under 5 screened

IMCI (Integrated Management of Childhood Illness):

156

Working health centers in IMCI

34,160

IMCI services

New borne care at home (NCH):

47

Health villages working in NCH

944

Home visits

25

Referred mothers and new born to specialized care

Neonatal resuscitation (NR):

35

Hospitals working in NR

6,529

New born

284

Referred new born to specialized care



Primary Health Care

8 (DoH)

Public PHC facilities/DoH received medical equipment and supplies directly by WHO



Health Information

170

Field visits (assessments, supervision, monitoring and evaluation)



Secondary Health Care

21

Hospitals supported directly by WHO with medical equipment and supplies***



EWARS

1,224

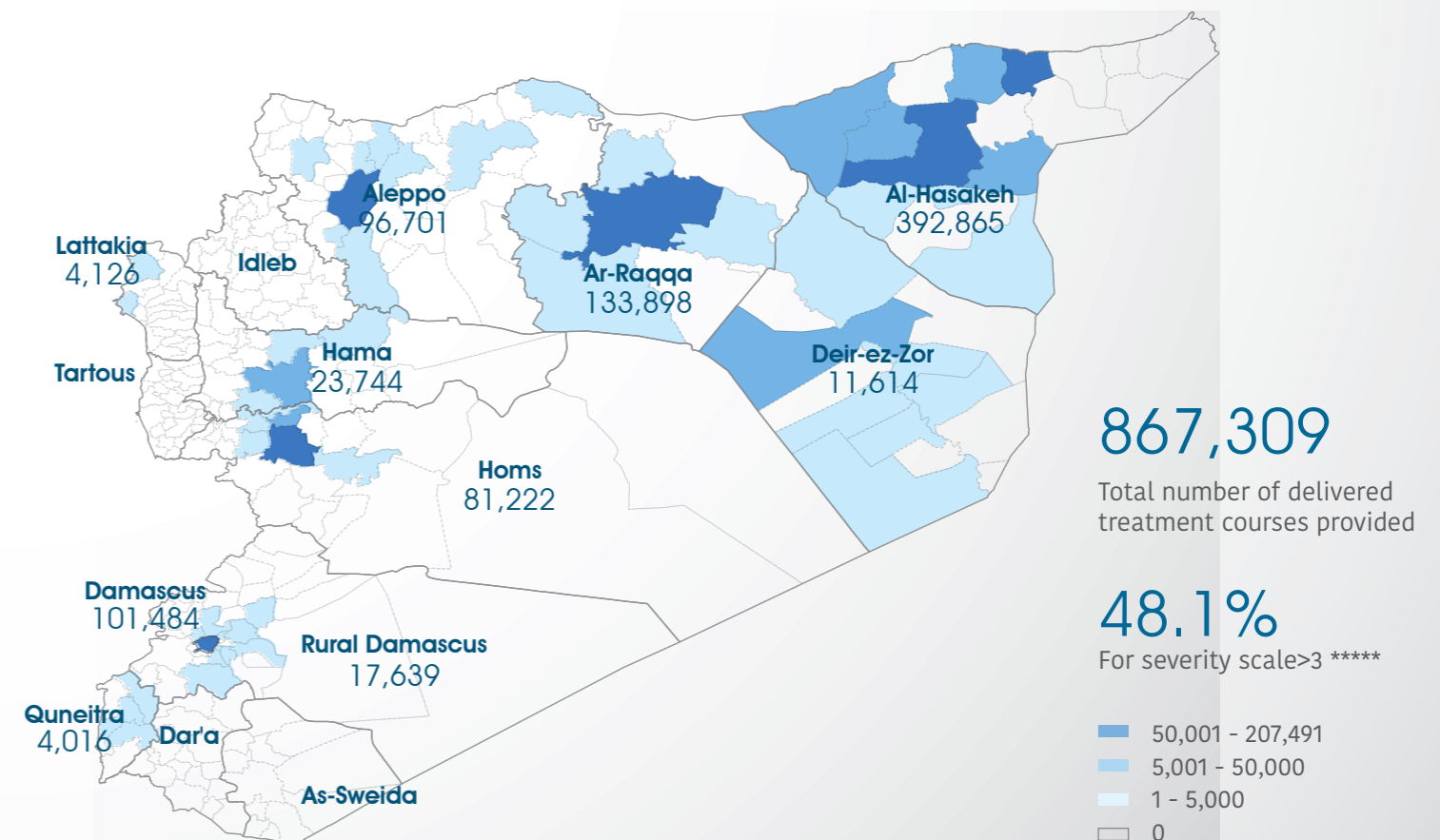
Sentinel sites



Top 5 reported morbidities

1. influenza-like illnesses
2. Acute Diarrhoea
3. Leishmaniasis
4. Lice
5. Acute Jaundice Syndrome

Number of treatment courses provided at sub-district level

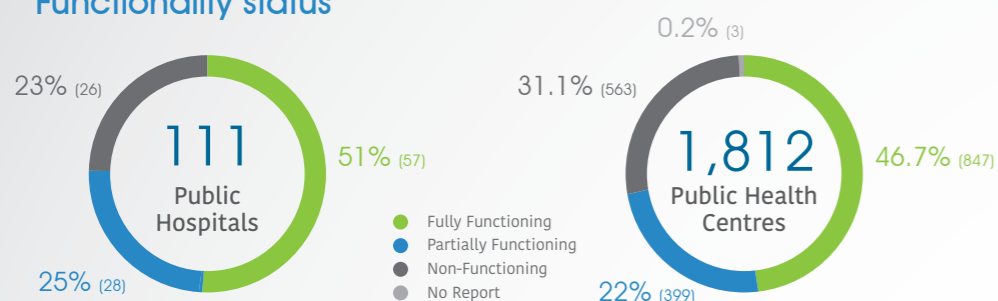


***** Data source: Severity scale July 2019

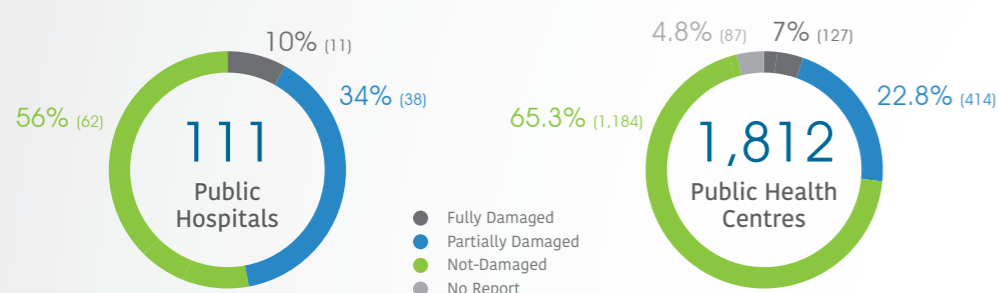
* The data in this infographic are for WHO's hub in Damascus only
 ** Based on public hospital received support from WHO
 *** Other undefined hospitals are supported indirectly throughout MoH and MoHE at central level

HeRAMS

Functionality status



Level of damage

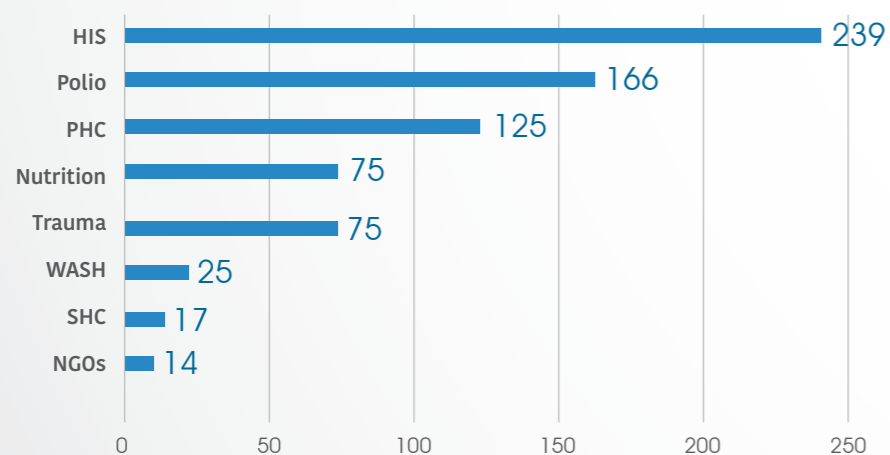


Consultations

Public Hospitals
648,384

Public PHC centres
1,038,586

Health care providers trained



711 Total of healthcare providers trained

Operations Support and Logistic

67 Total deliveries across the country including IA convoy

67 Total number of regular deliveries across the country including IA convoy

67 Total regular deliveries across the country

67 Total number of regular deliveries

766,865 Total number of treatment courses delivered

40 Total weight (tons) of supplies delivered

40 Medicines

27 Kits

11 Equipment

51 Non-medical supplies (WASH, Nutrition, and others)

129.20 ALL regular deliveries

129.20 Total weight (tons) of regular deliveries across the country including IA convoy

0 Inter-agency convoys

0 Total number of IA convoys

0 Total number of treatment courses delivered

0 Total weight (tons) of supplies delivered

0 Medicines

0 Kits

0 Equipment

0 Non-medical supplies (WASH, Nutrition, and others)

0 All deliveries under IA convoys

National NGO coordination

19 National NGOs as implementing partners

16 Supported PHC centres by WHO implementing partners

28 Mobile medical teams rolled out

21 Static medical points supported

15 IDP camps/settlements covered by WHO partners

WASH

● Points tested for drinking water quality

● Drinking water reported points tested and found to be of sub-standard quality

IDP camps

132,775 PHC outpatient consultations provided by WHO partners

100,444 Treatment courses provided by national NGOs

1,666 Patients referred for specialized treatment

550 Trauma cases supported by WHO partners

431 People with disabilities assisted by WHO partners



Uncontrolled sources

