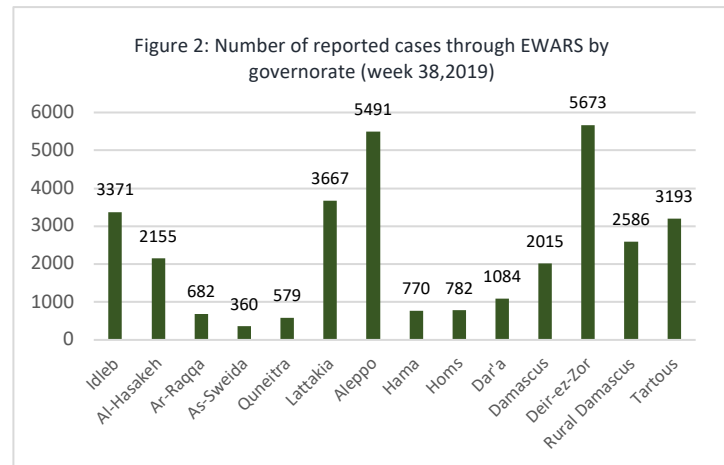
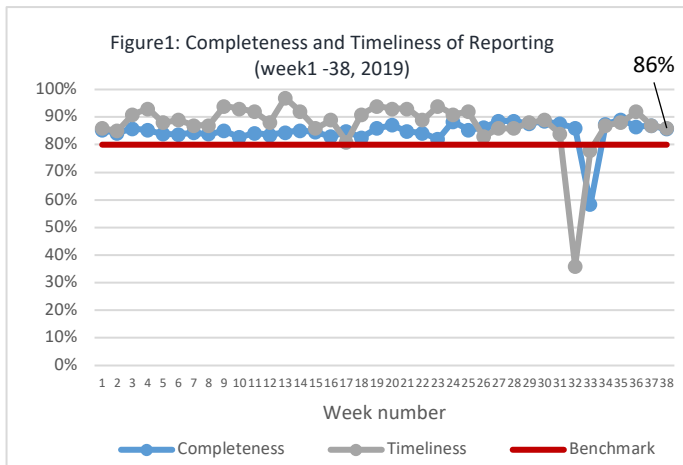


Highlights

- A total of 265 720 consultations were recorded in all the 14 governorates in week 38.
- The leading causes of morbidity among all age groups were influenza-like illnesses (54.6%) and acute diarrhea (31.4%).
- 43 suspected measles cases were reported during week 38. Among them, the blood specimens of 38 cases were collected and tested at the reference laboratory in Damascus. The laboratory result showed all negative for measles.
- Four acute flaccid paralysis cases were reported each from Damascus, Rural Damascus, Hama, and Tartous. The stool samples were collected and transported to the polio reference laboratory in Damascus. The all samples tested were negative for poliomyelitis.
- There was an increase in ILI cases by 10% to previous week, in total of 17684 ILI cases were reported in weeks 38.

Performance Indicators

- A total of 1099 out of 1282 active reporting sites (89.7%) in all 14 governorates of Syria reported through EWARS, with 87% timeliness among those sites providing data during week 39 (Figure 1).



Morbidity

1. Proportional Morbidity

- A total of 265 720 consultations were recorded in 1099 health facilities in 14 governorates in week 38, 2019. Among them, 32 408 cases were EWARS notifiable health conditions (Figure 2).
- Among all age groups, the leading causes of morbidity influenza-like illnesses (ILI) (54.6%), and acute diarrhea (AD) (31.4%).
- Of the 32 408 total reported cases, 50.5% (16 390) were female, and 42.8% (13 731) were children under 5 years old.
- Among children under 5 years of age, 37% of cases are AD, and ILI representing 53% of the cases during this reporting period (Figure 3).
- There was slight upward trend of AD observed.

Figure3: Proportional morbidity by age group in week 38, 2019

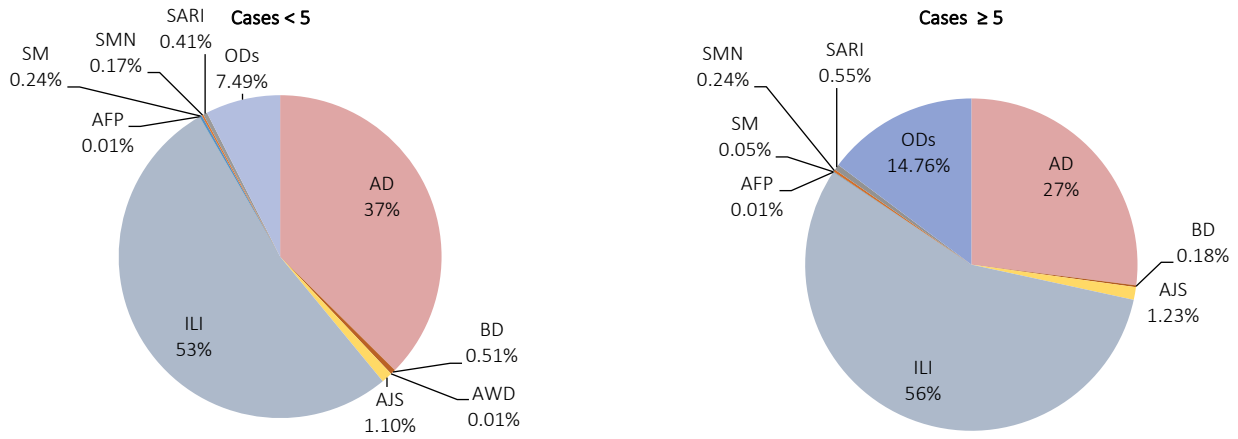
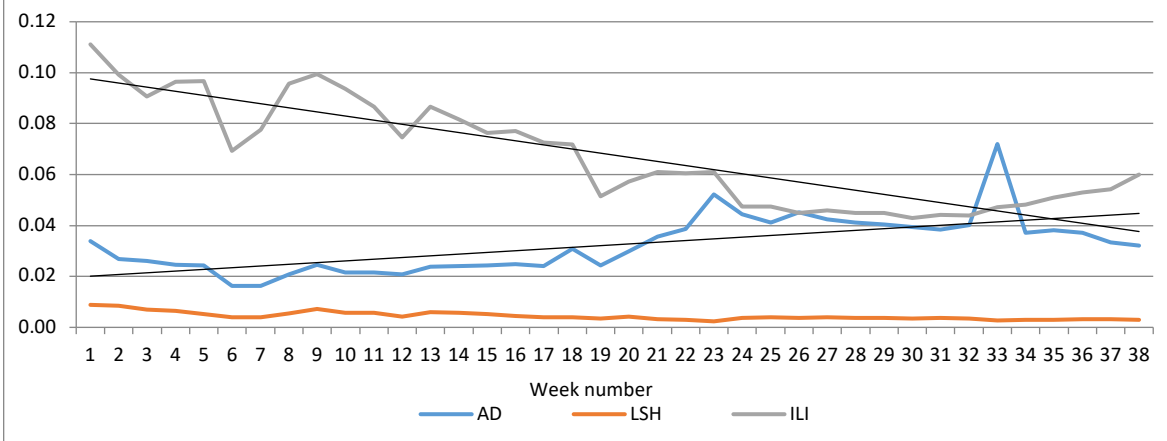


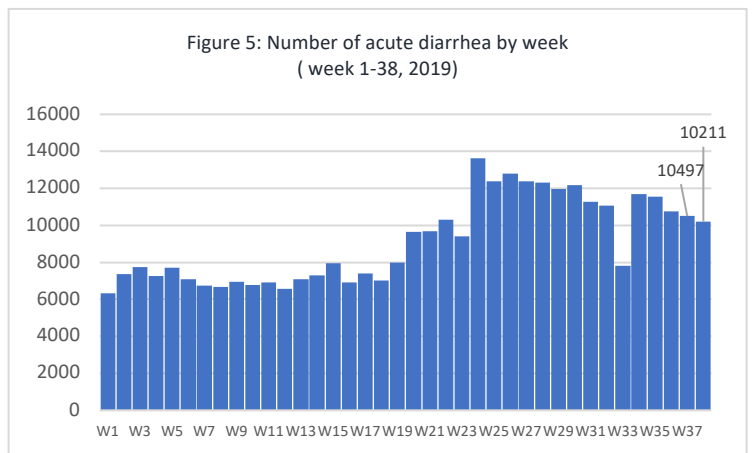
Figure 4: Proportion of Morbidity of AD, ILI, and LSH among the total consultation (week 1 - 38, 2019)



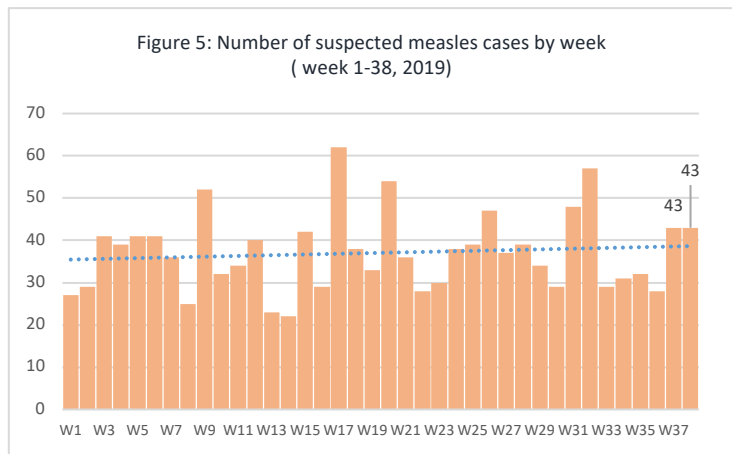
2. Waterborne Diseases

- There was one case of acute watery diarrhea (AWD) in week 38.
- No change in the trend of diarrhea was observed in week 38. (Figure 4).

Figure 5: Number of acute diarrhea by week (week 1-38, 2019)



- Four cases of acute flaccid paralysis (AFP) were reported from Hama, Damascus, Rural Damascus, and Tartous.
- The total number of suspected measles is 43, which Number of suspected measles in week 38 was (43). The trend remains stable. In total, 1409 suspected measles cases have been reported in 2019, and most cases were reported from Deir-ez-Zor (22.3%), Idleb (14.2%), and Ar-Raqqa (13.6%).



4. Other Diseases

- 3785 cases were reported as “other diseases” through EWARS. The health conditions with the highest incidents were lice (854), leishmaniasis (821), and typhoid (534).

Public Health Response Actions

Acute flaccid paralysis

Four AFP cases were reported during week 38. Each case from Damascus, Rural Damascus, Hama, and Tartous. The stool samples of all the cases were collected and transferred to the polio reference laboratory in Damascus. The result showed all the cases were negative for *poliomyelitis*.

Suspected measles

A total of 43 suspected measles cases was reported during week 38. All the cases were investigated by rapid response teams of the health directorates except for five cases reported from Idleb governorate where the access is limited. The blood specimens from 38 suspected cases were collected and tested for IgM ELISA at the reference laboratory in Damascus. The laboratory result showed that all the tested cases negative for measles.

Acute watery diarrhea case

One case of acute watery diarrhea was reported during week 38 from Al Hol camp in Al-Hasakeh. The case is a child under 5 years old. Cholera rapid diagnostic test was performed and *vibrio cholerae* was not detected.

Comparison with Previous Week by Health Condition

Disease	Week 37	Week 38
Acute diarrhea (AD)	10 286	10 180
Bloody diarrhea (BD)	111	103
Acute watery diarrhea (AWD)	0	1
Acute jaundice syndrome (AJS)	364	381
Influenza like illness (ILI)	15 991	17 684
Acute flaccid paralysis (AFP)	3	4
Suspected measles (SM)	43	43
Suspected meningitis (SMN)	65	68
Typhoid fever (TYF)	445	534
Brucellosis (BRU)	341	390
Suspected tuberculosis (TB)	38	40
Severe acute respiratory infection (SARI)	226	159
Suspected pertussis (PER)	61	69
suspected leishmaniasis (LSH)	882	821
Suspected chickenpox (CHP)	185	192
Scabies (SCA)	361	361
Lice (LIC)	697	854
Suspected mumps (MUM)	70	100
Others	405	424
Total	30 574	32 408

		Idleb	Al-Hasakeh	Ar-Raqqa	As-Sweida	Quneitra	Lattakia	Aleppo	Hama	Homs	Dar'a	Damascus	Deir-ez-Zor	Rural Damascus	Tartous	Total
Acute diarrhea (AD)	< 5	860	503	208	40	47	413	851	188	136	138	426	888	273	167	5 138
	≥ 5	750	453	128	65	41	488	682	187	117	155	550	846	249	331	5 042
Bloody diarrhea (BD)	< 5	0	5	20	0	0	0	1	0	1	7	1	35	0	0	70
	≥ 5	0	6	11	0	0	1	1	0	0	4	4	5	1	0	33
Acute watery diarrhea (AWD)	< 5	0	1	0	0	0	0	0	0	0	0	0	0	0	0	1
	≥ 5	0	0	0	0	0	0	0	0	0	0	0	0	0	0	0
Acute jaundice syndrome (AJS)	< 5	40	5	34	0	0	3	6	1	5	9	5	41	2	0	151
	≥ 5	39	19	20	3	2	7	11	15	33	30	17	19	9	6	230
Influenza like illness (ILI)	< 5	499	417	104	82	129	1 132	1 296	62	145	215	290	1 462	635	760	7 228
	≥ 5	445	617	66	151	337	1 403	1 880	88	249	325	625	1 201	1 208	1 861	10 456
Acute flaccid paralysis (AFP)	< 5	0	0	0	0	0	0	0	1	0	0	1	0	0	0	2
	≥ 5	0	0	0	0	0	0	0	0	0	0	0	0	1	1	2
Suspected measles (SM)	< 5	0	1	10	0	1	1	10	2	0	1	3	2	1	1	33
	≥ 5	5	1	0	0	0	0	0	0	0	2	1	1	0	0	10
Suspected meningitis (SMN)	< 5	0	1	1	0	0	3	0	4	0	0	0	14	0	1	24
	≥ 5	6	5	1	1	0	1	0	7	0	3	4	15	1	0	44
Severe acute respiratory infection (SARI)	< 5	2	2	2	0	0	0	1	10	0	0	13	5	0	21	56
	≥ 5	0	1	2	3	2	20	1	13	0	0	30	2	0	29	103
Typhoid fever (TYF)	< 5	2	1	1	0	1	0	4	1	1	18	1	32	2	0	64
	≥ 5	27	1	10	0	2	0	16	17	8	93	1	279	16	0	470
Brucellosis (BRU)	< 5	9	0	0	0	0	0	9	0	0	0	0	23	3	0	44
	≥ 5	19	1	6	0	0	0	19	17	5	25	12	215	27	0	346
Suspected tuberculosis (TB)	< 5	0	1	0	0	0	0	1	0	0	0	0	0	0	0	2
	≥ 5	7	6	0	0	0	0	14	0	0	0	5	2	4	0	38
Suspected pertussis (PER)	< 5	24	4	0	0	0	0	6	0	0	0	0	9	0	0	43
	≥ 5	22	1	0	0	0	0	0	0	1	0	0	2	0	0	26
suspected leishmaniasis (LSH)	< 5	84	2	2	0	0	0	64	5	0	0	0	28	1	0	186
	≥ 5	131	3	9	1	0	3	376	65	2	0	5	31	5	4	635
Suspected chickenpox (CHP)	< 5	8	9	0	0	0	1	8	6	1	2	2	51	6	0	94
	≥ 5	40	3	0	4	1	0	10	3	0	1	4	28	3	1	98
Scabies (SCA)	< 5	21	7	0	2	0	2	19	2	6	0	0	74	1	2	136
	≥ 5	50	5	0	2	1	7	39	11	12	12	5	73	8	0	225
Lice (LIC)	< 5	90	9	2	4	3	19	57	2	7	2	2	41	10	0	248
	≥ 5	167	4	8	2	6	149	91	51	30	5	5	59	22	7	606
Suspected mumps (MUM)	< 5	0	1	17	0	0	3	1	0	3	0	1	18	1	0	45
	≥ 5	24	1	4	0	0	0	7	2	2	1	0	13	1	0	55
Others	< 5	0	36	3	0	1	3	8	5	9	5	2	83	11	0	166
	≥ 5	0	23	13	0	5	8	2	5	9	31	0	76	85	1	258
Total of < 5		1 639	1 005	404	128	182	1 580	2 342	289	314	397	747	2 806	946	952	13 731
Total of ≥ 5		1 732	1 150	278	232	397	2 087	3 149	481	468	687	1 268	2 867	1 640	2 241	18 677
Grand total		3 371	2 155	682	360	579	3 667	5 491	770	782	1 084	2 015	5 673	2 586	3 193	32 408