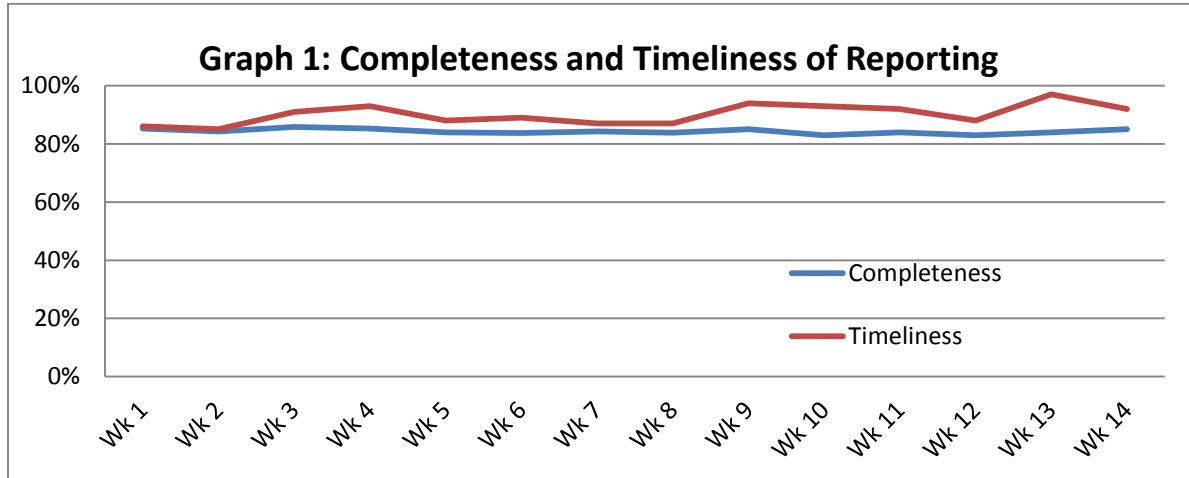


Highlights:

- ❖ Leishmaniasis increase in Deir Ezzor continues in this week with 362 reported cases.
- ❖ 3 cases of acute paralysis flaccid reported this week from Aleppo (1), Swaida (1) and Hama (1).

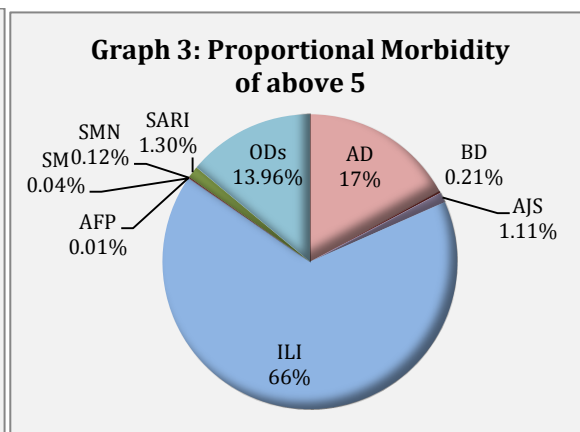
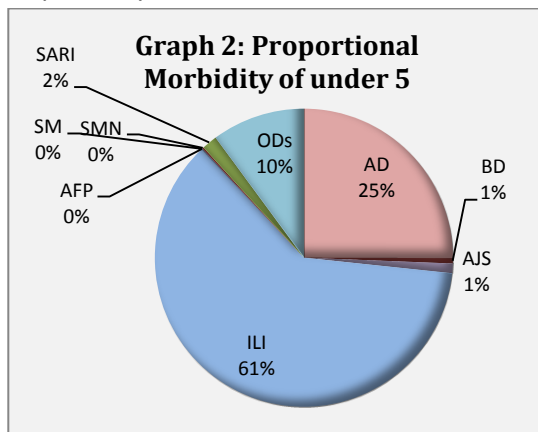
Completeness & Timeliness of Reporting

- ❖ The overall completeness of reporting was 85%; (1,090 out of total 1280 EWARS sentinel sites). 14 governorates have reported this week.
- ❖ Timeliness of reporting was 92%.



The Morbidity Cases

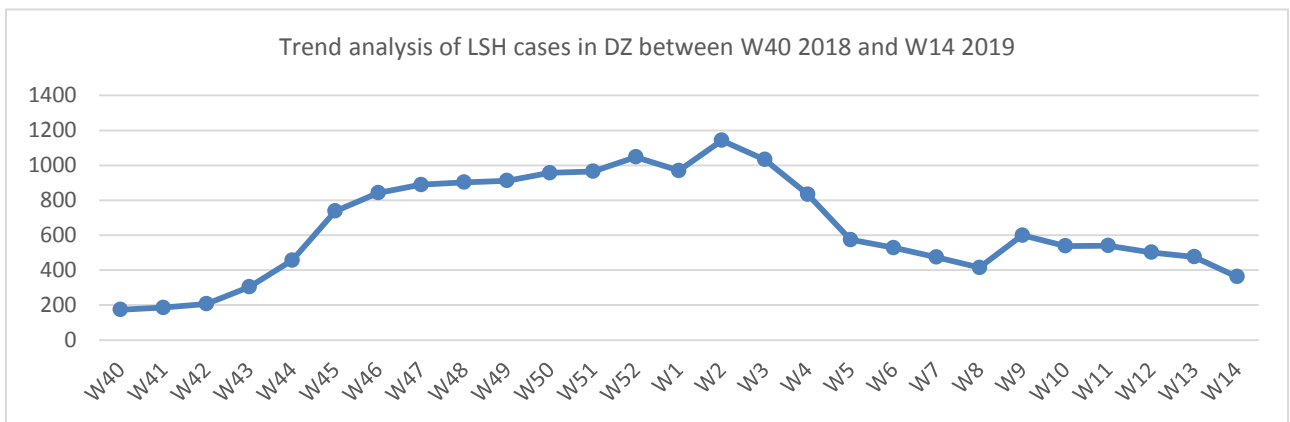
- ❖ Out of a total of 243,698 consultations, 33,514 EWARS notifiable cases were reported; of which 21,538 cases were influenza like illness (64%), 6,772 cases were acute diarrhoea (20%), 361 were acute jaundice syndrome, 484 were severe acute respiratory infection, 21 were suspected measles, 118 were bloody diarrhoea, 47 were suspected meningitis and 3 case of acute flaccid paralysis.
- ❖ Graphs 2 and 3 below show the proportional morbidity among < 5 and ≥ 5 years age groups respectively.



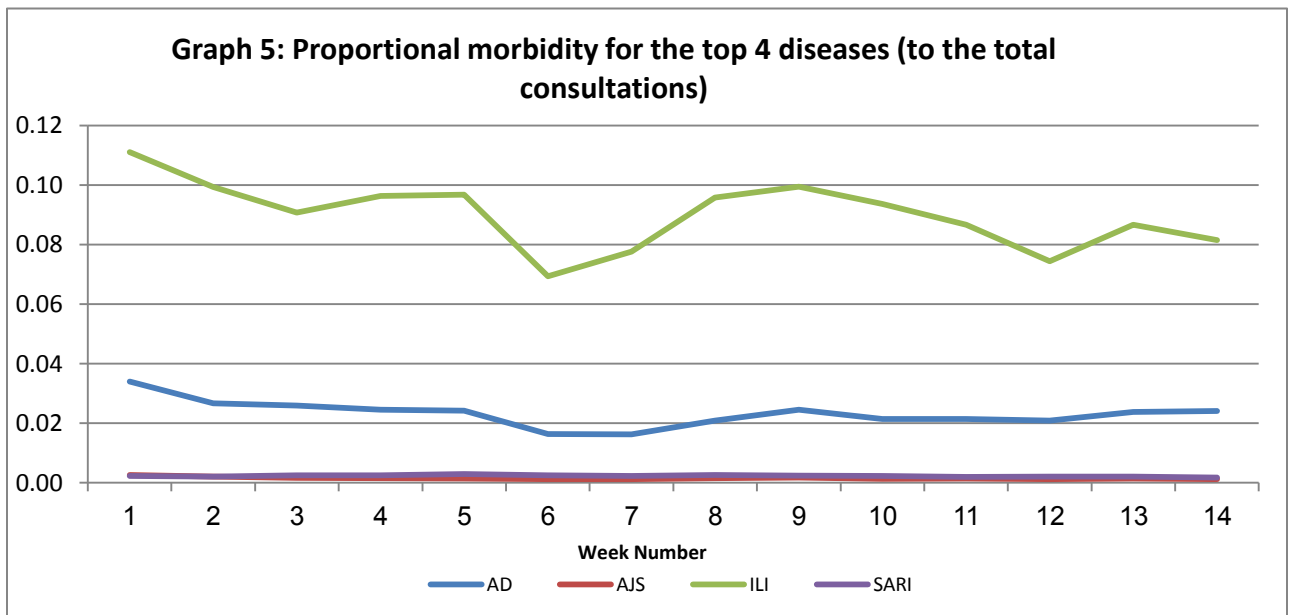
Acute diarrhoea constitutes (25%) among < 5 and (17%) among ≥ 5, while influenza-like illness constitutes (61%) of the cases among <5 and (66%) of the cases among ≥ 5 years old.

- ❖ 49% of the cases were distributed among males. 61% of the cases were distributed among ≥5 age group.
- ❖ In total 4,169 cases were reported as “other diseases”. The most important diseases reported within this group were; 1,653 cases of leishmaniasis (mostly from Aleppo, Deir Ezzor, and Hama), 228 cases of brucellosis, 238 cases of typhoid, 30 cases of tuberculosis, 89 pertussis, and 158 mumps.

Graph 4: the below graph shows the trend analysis of suspected Leishmaniasis cases reported through EWARS in Deir Ezzor. The graph shows significant increase in cases since week 43. The decrease in cases in 2019 is attributed to improvement in quality of reporting, as duplication in reporting was observed in data of 2018.



Graph 5: shows proportional morbidity for the top 4 diseases (to the total consultations). The graph shows a slight decrease in the trend of ILI cases, which in line with seasonality of this disease.



- ❖ Table 1 shows comparison between reported cases in week-13 and week-14 2019.

Table 1: Comparison between reported cases for week 13 and week 14, 2019.

Disease	13	14
AD	6,715	6,772
BD	106	118
AWD	0	0
AJS	419	361
ILI	22,907	21,538
AFP	6	3
SM	23	21
SMN	60	47
SARI	571	484
TYF	172	238
PER	69	89
LSH	1552	1653
BRU	202	228
TB	18	30
SCA	410	486
LIC	552	543
CHP	362	342
MUM	148	158
Others	350	402
Total	34639	33514

❖ The Response

Leishmaniasis in Deir Ezzor:

WHO mission to Deir Ezzor was conducted between 7 and 11 February. The aim of the mission was follow up with DoH and other relevant partners the implementation of leishmaniasis control work plan, and monitor the activities implementation. During this week, WHO has initiated a campaign to distribute long lasting insecticide-treated nets quantity 65,000 bed nets, in the highly affected areas. WHO also supported leishmaniasis diagnosis in three health districts in Deir Ezzor with 3 microscopes, in addition, 12 laboratory technicians were trained on leishmaniasis diagnosis. To strengthen the early detection and provision of Leishmaniasis treatment in v Dier Ezzor, WHO supported the control programme in MoH with 200,000 vials of anti-leishmaniasis medicine.

Acute flaccid paralysis: Stool samples were collected from AFP cases and sent to the reference lab in Damascus. 122 AFP cases is reported in 2019 up to this week, 86discarded, 36 pending. 203 samples were collected from contacts in 2019 up to date annualized NP AFP rate is 5.9.

. screening and vaccination activities continue for children coming from Dier Ezzor, Raqqa, Idlib and returning from Lebanon and IPV is administered to children under 5 years who missed polio vaccination,

Table-2: Distribution of cases per age group, and by Governorate-week-14, 2019:

Code	age group	Idleb	Hassaka	Raqqa	Sweida	Qunaitra	Lattakia	Aleppo	Hama	Homs	Daraa	Damascus	DierEzor	Rural Damascus	Tartous	Grand Total
AD	< 5	645	328	99	31	48	141	298	135	125	123	431	557	259	82	3,302
	≥ 5	502	329	75	44	41	322	299	88	96	94	514	560	297	209	3,470
BD	< 5	0	27	6	0	0	2	0	0	2	4	1	33	1	0	76
	≥ 5	0	19	8	0	0	1	0	0	2	1	2	9	0	0	42
AWD	< 5	0	1	0	0	0	0	0	0	0	0	0	0	0	0	1
	≥ 5	0	0	0	0	0	0	0	0	0	0	0	0	0	0	0
AJS	< 5	33	8	26	0	2	1	7	3	3	9	5	37	2	0	136
	≥ 5	32	10	20	3	3	2	20	27	10	22	21	39	14	2	225
ILI	< 5	761	483	88	88	129	1,145	951	164	171	271	497	1,367	807	1,161	8,083
	≥ 5	583	663	84	227	447	2,011	1,906	143	335	371	762	1,442	1,601	2,880	13,455
AFP	< 5	0	0	0	0	0	0	1	0	0	0	0	0	0	0	1
	≥ 5	0	0	0	1	0	0	0	1	0	0	0	0	0	0	2
SM	< 5	0	2	1	1	1	0	2	0	0	0	2	1	2	0	12
	≥ 5	3	3	1	0	0	0	0	0	0	0	0	1	1	0	9
SMN	< 5	0	0	3	1	0	0	0	7	1	2	3	5	1	0	23
	≥ 5	4	3	0	0	0	1	0	7	0	1	2	3	2	1	24
SARI	< 5	0	3	14	3	0	4	6	59	4	0	23	18	0	85	219
	≥ 5	1	3	19	16	0	16	2	49	5	0	46	15	0	93	265
Others	< 5	117	257	54	5	4	13	251	26	66	26	5	488	16	3	1,331
	≥ 5	350	176	79	13	18	47	822	277	187	89	52	604	103	21	2,838
Total Sum of < 5		1,556	1,109	291	129	184	1,306	1,516	394	372	435	967	2,506	1,088	1,331	13,184
Total Sum of ≥ 5		1,475	1,206	286	304	509	2,400	3,049	592	635	578	1,399	2,673	2,018	3,206	20,330
Total		3,031	2,315	577	433	693	3,706	4,565	986	1,007	1,013	2,366	5,179	3,106	4,537	33,514