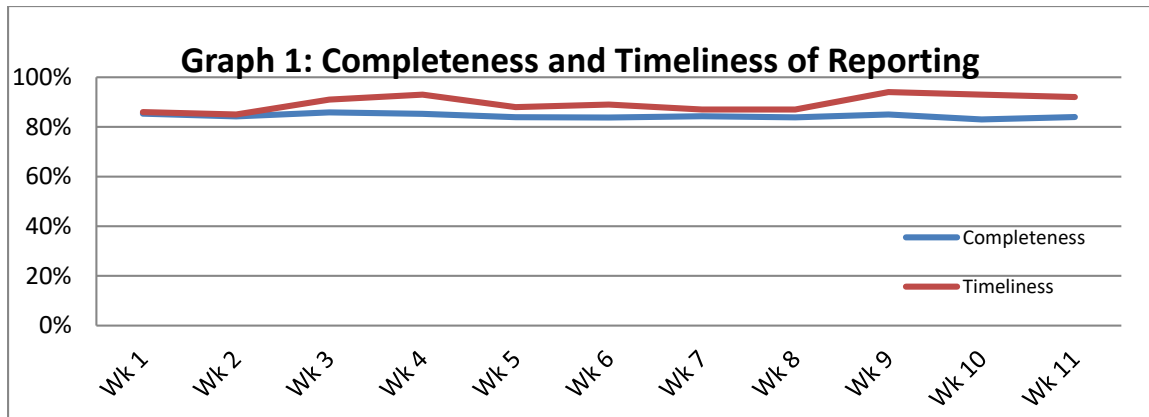


**Highlights:**

- ❖ Leishmaniasis increase in Deir Ezzor continues in this week with 540 reported cases.
- ❖ 4 cases of acute paralysis flaccid were reported from Rural Damascus (1), Aleppo (1), Swaida (1) and Hama (1).
- ❖ Three suspected HIV cases were reported from Idleb governorate.

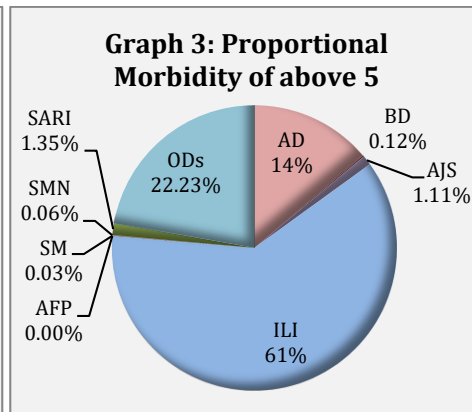
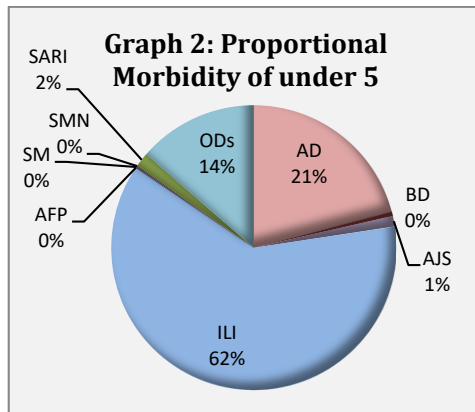
**❖ Completeness & Timeliness of Reporting**

- ❖ The overall completeness of reporting was 84%; (1,078 out of total 1280 EWARS sentinel sites). 14 governorates have reported this week.
- ❖ Timeliness of reporting was 92%.



**❖ The Morbidity Cases**

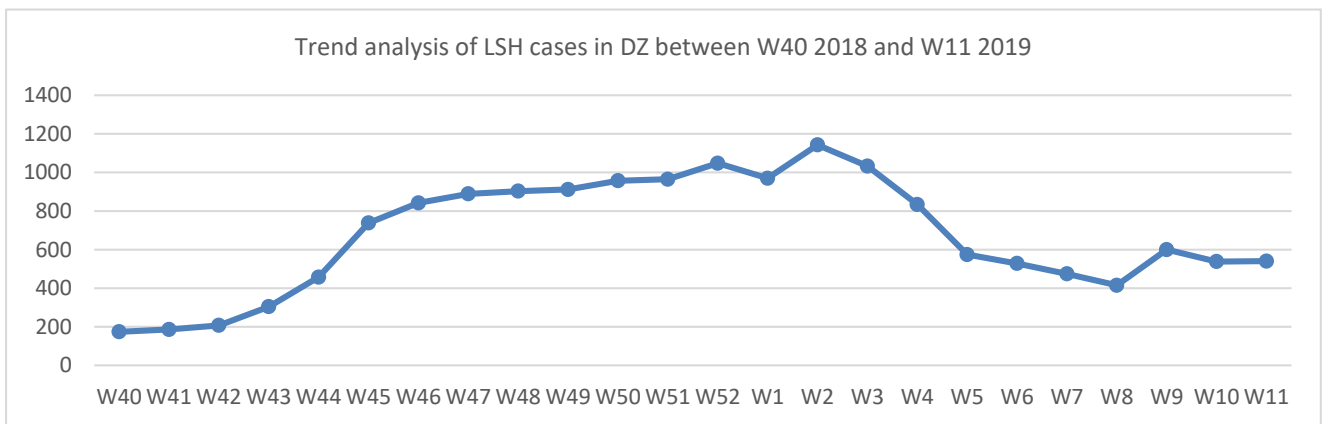
- ❖ Out of a total of 258,980 consultations, 39,461 EWARS notifiable cases were reported; of which 24,270 cases were influenza like illness (64%), 6,514 cases were acute diarrhoea (17%), 452 were acute jaundice syndrome, 571 were severe acute respiratory infection, 31 were suspected measles, 101 were bloody diarrhoea, 34 were suspected meningitis and 4 case of acute flaccid paralysis.
- ❖ Graphs 2 and 3 below show the proportional morbidity among < 5 and ≥ 5 years age groups respectively.



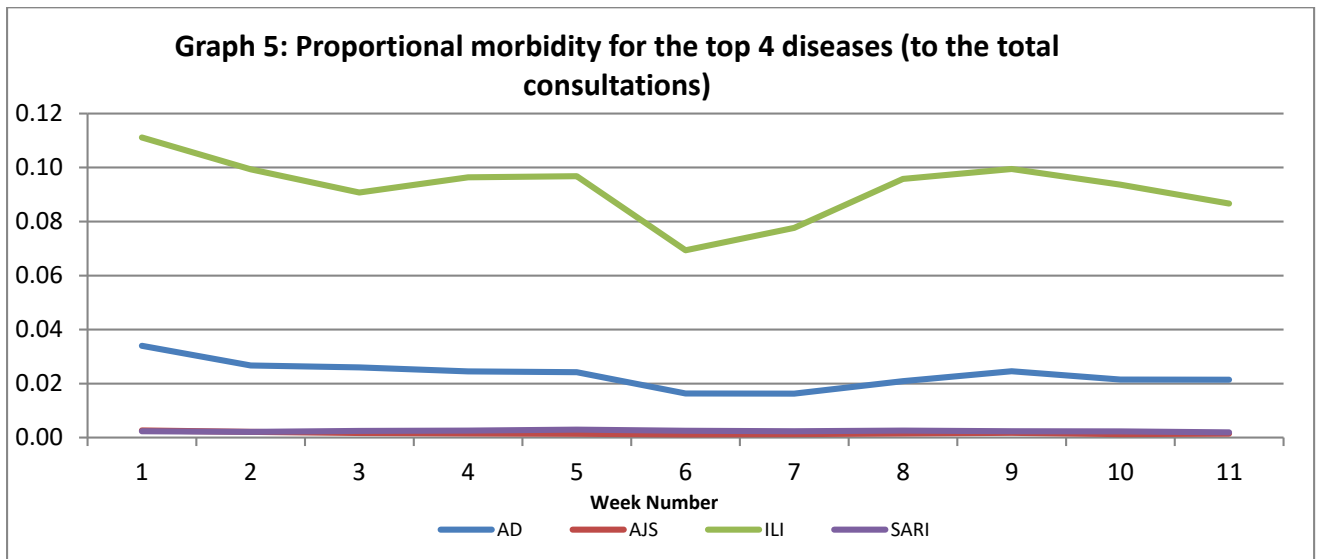
Acute diarrhoea constitutes (21%) among < 5 and (14%) among ≥ 5, while influenza-like illness constitutes (62%) of the cases among <5 and (61%) of the cases among ≥ 5 years old.

- ❖ 47% of the cases were distributed among males. 62% of the cases were distributed among ≥5 age group.
- ❖ In total 7,484 cases were reported as “other diseases”. The most important diseases reported within this group were; 1,778 cases of leishmaniasis (mostly from Aleppo, Deir Ezzor and Hamah), 178 cases of brucellosis, 233 cases of typhoid, 12 cases of tuberculosis, 69 pertussis, and 134 mumps.

Graph 4: the below graph shows the trend analysis of suspected Leishmaniasis cases reported through EWARS in Deir Ezzor. The graph shows significant increase in cases since week 43. The decrease in cases in 2019 is attributed to improvement in quality of reporting, as duplication in reporting was observed in data of 2018.



- ❖ Graph 5: shows proportional morbidity for the top 4 diseases (to the total consultations). The graph shows a slight decrease in the trend of ILI cases, which in line with seasonality of this disease.



- ❖ Table 1 shows comparison between reported cases in week-10 and week-11 2019.

Table 1: Comparison between reported cases for week 10 and week 11, 2019.

Disease	Week 10	Week 11
AD	6,426	6,514
BD	113	101
AWD	0	0
AJS	408	452
ILI	28,705	24,270
AFP	3	4
SM	30	31
SMN	39	34
SARI	660	571
TYF	214	233
PER	36	69
LSH	1749	1778
BRU	196	178
TB	12	12
SCA	462	415
LIC	869	662
CHP	310	350
MUM	120	134
Others	529	3653
<b>Total</b>	<b>40881</b>	<b>39461</b>

#### ❖ Response

**HIV suspected case in Idleb:** WHO was notified on three suspected HIV cases from the same family in Idleb, WHO arranged collecting and testing of lab samples from the cases. the laboratory analysis showed positive HIV results for the three cases. the cases were enrolled in the national program and the anti-retroviral thereby will be provided to the patients by WHO.

**Acute flaccid paralysis:** Stool samples were collected from AFP cases and sent to the reference lab in Damascus. (95) AFP cases is reported in 2019. Laboratory tests of 60 cases showed negative result for polio. A total of 150 samples were collected from contacts in 2019 up to date. The proportion of AFP to contacts is 1:1.6 and lab results: NVI: 101, pending: 47 NPEV: 2. screening children coming from DZ & RQ & Edlib and returning from Lebanon is continue and IPV is administered to children under 5 years who missed polio vaccination,

**Table-2: Distribution of cases per age group, and by Governorate-week-11, 2019:**

Code	age group	Idleb	Hassaka	Raqa	Sweida	Qunaitra	Lattakia	Aleppo	Hama	Homs	Daraa	Damascus	DierEzor	Rural Damascus	Tartous	Grand Total
AD	< 5	590	153	175	35	54	285	222	145	125	144	428	445	217	111	3,129
	≥ 5	474	142	121	57	54	585	208	66	87	146	492	527	232	194	3,385
BD	< 5	0	43	10	0	0	2	0	0	1	8	0	7	0	0	71
	≥ 5	0	4	10	0	0	0	0	0	0	6	2	8	0	0	30
AWD	< 5	0	0	0	0	0	0	0	0	0	0	0	0	0	0	0
	≥ 5	0	0	0	0	0	0	0	0	0	0	0	0	0	0	0
AJS	< 5	32	24	31	0	2	1	12	4	4	12	6	50	2	0	180
	≥ 5	46	27	16	1	5	14	42	21	18	38	14	17	10	3	272
ILI	< 5	738	450	64	111	194	1,479	1,320	176	272	263	641	1,360	924	1,247	9,239
	≥ 5	565	634	60	210	597	1,919	2,124	205	424	443	923	1,628	1,853	3,446	15,031
AFP	< 5	0	0	0	0	0	0	1	1	0	0	0	0	1	0	3
	≥ 5	0	0	0	1	0	0	0	0	0	0	0	0	0	0	1
SM	< 5	1	1	6	0	0	4	3	1	1	0	3	2	1	0	23
	≥ 5	4	0	0	0	0	1	0	0	0	0	1	1	1	0	8
SMN	< 5	0	2	5	0	0	2	2	3	0	0	3	1	0	2	20
	≥ 5	2	0	2	0	0	0	0	4	0	0	3	2	0	1	14
SARI	< 5	0	5	0	3	3	11	19	77	1	0	32	8	0	81	240
	≥ 5	1	4	0	13	0	27	5	65	2	0	46	13	0	155	331
Others	< 5	102	141	824	5	10	4	334	32	29	25	15	486	24	1	2,032
	≥ 5	366	188	2,516	10	24	151	729	358	87	63	43	775	98	44	5,452
Total Sum of < 5		1,463	819	1,115	154	263	1,788	1,913	439	433	452	1,128	2,359	1,169	1,442	14,937
Total Sum of ≥ 5		1,458	999	2,725	292	680	2,697	3,108	719	618	696	1,524	2,971	2,194	3,843	24,524
Total		2,921	1,818	3,840	446	943	4,485	5,021	1,158	1,051	1,148	2,652	5,330	3,363	5,285	39,461