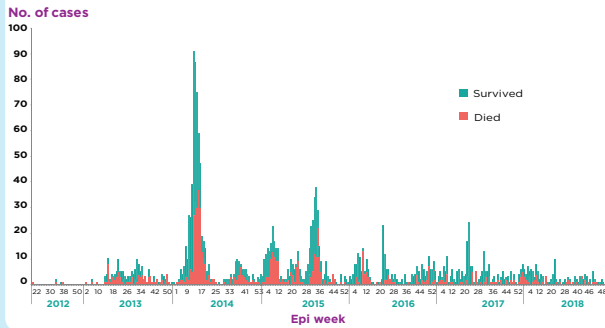


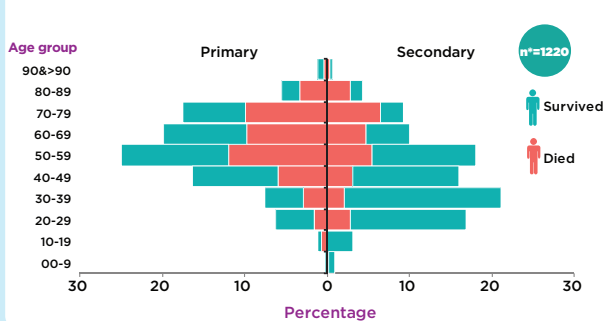
### HIGHLIGHTS

- At the end of December 2018, a total of 2279 laboratory-confirmed cases of Middle East respiratory syndrome (MERS), including 806 associated deaths (case-fatality rate: 35.3%) were reported globally; the majority of these cases were reported from Saudi Arabia (1901 cases, including 732 related deaths with a case-fatality rate of 38.5%).
- During the month of December, a total of 5 laboratory-confirmed cases of MERS were reported globally (all from Saudi Arabia) with no associated death. There were no healthcare workers affected and most of the cases were primary cases. One of the cases was a secondary infection through household contact.
- The demographic and epidemiological characteristics of reported cases, when compared during the same corresponding period of 2013 to 2018, do not show any significant difference or change. Owing to improved infection prevention and control practices in hospitals, the number of hospital-acquired cases of MERS has dropped significantly since 2015.
- The age group 50-59 years continues to be at highest risk for acquiring infection of primary cases. The age group 30-39 years is most at risk for secondary cases. The number of deaths is higher in the age group 50-59 years for primary cases and 70-79 years for secondary cases.

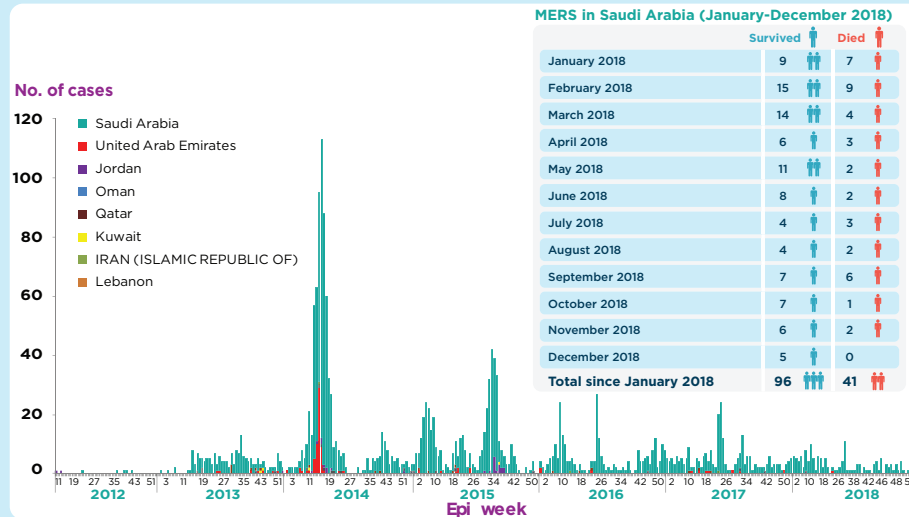
#### MERS cases reported from the Kingdom of Saudi Arabia by week of symptoms onset, June 2012-December 2018



#### Age and fatality distribution of Primary and Secondary cases of MERS reported from Saudi Arabia, 2012-December 2018



### Laboratory-confirmed cases of MERS reported in Eastern Mediterranean Region, April 2012-December 2018



MERS in Saudi Arabia (January-December 2018)

Month	Survived	Died
January 2018	9	7
February 2018	15	9
March 2018	14	4
April 2018	6	3
May 2018	11	2
June 2018	8	2
July 2018	4	3
August 2018	4	2
September 2018	7	6
October 2018	7	1
November 2018	6	2
December 2018	5	0
<b>Total since January 2018</b>	<b>96</b>	<b>41</b>

### Epidemiological characteristics of MERS cases reported globally between July-December 2013 and July-December 2018

Characteristic	Jul-Dec 13	Jul-Dec 14	Jul-Dec 15	Jul-Dec 16	Jul-Dec 17	Jul-Dec 18
Number	99	93	237	96	88	46
Median age in years	52	56	54	56	52	55
Gender (% male)	64	77	61	76	70	87
% of primary cases	23	44	6	41	33	52
% of secondary cases	51	38	62	11	23	22
(%) of unknown contact history	25	18	2	0	0	2
% of HCW	22	14	18	6	9	0
% of Fatal	46	51	36	31	38	30

### Characteristics of MERS cases reported from Kingdom of Saudi Arabia, June 2012-December 2018

Type of case	2012	2013	2014	2015	2016	2017	2018	Grand Total
Primary	3	36	164	52	74	71	54	454
Secondary	2	93	264	222	60	90	35	766
Missing		1	15	102	103	68	50	339
Unknown		28	219	78	11	5	1	342
<b>Total</b>	<b>5</b>	<b>158</b>	<b>662</b>	<b>454</b>	<b>248</b>	<b>234</b>	<b>140</b>	<b>1901</b>

### SUMMARY

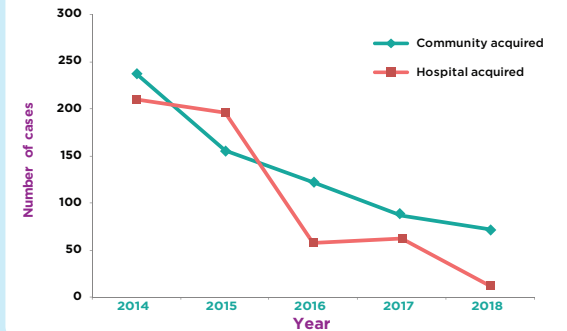
**2279** Laboratory-confirmed Cases Reported Since April 2012

**806** deaths reported since April 2012

**27** countries reported cases globally

**12** countries reported cases since April 2012 in the Eastern Mediterranean Region

#### Community versus hospital acquired (symptomatic) MERS cases in Eastern Mediterranean Region, Jan 2014-Dec 2018



#### Cases of MERS in healthcare workers reported from Saudi Arabia Jan 2013 - Dec 2018

