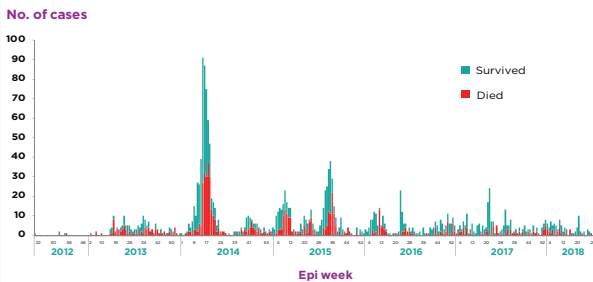


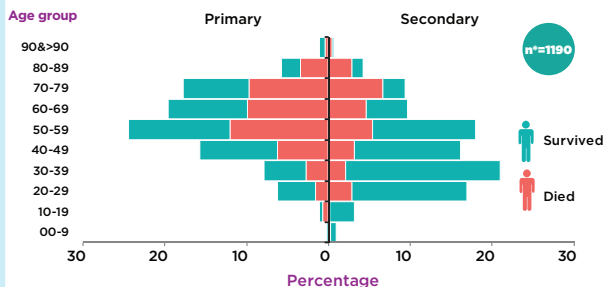
### HIGHLIGHTS

- At the end of July 2018, a total of 2237 laboratory-confirmed cases of Middle East respiratory syndrome (MERS), including 793 associated deaths (case-fatality rate: 35.5%) were reported globally; the majority of these cases were reported from Saudi Arabia (1861 cases, including 719 related deaths with a case-fatality rate of 38.6%).
- During the month of July, a total of 6 laboratory-confirmed cases of MERS were reported in Saudi Arabia including 1 associated death (case-fatality rate: 16.7%). These cases include one symptomatic household contact; no healthcare associated transmission or hospital outbreak was reported during this month.
- The demographic and epidemiological characteristics of reported cases, when compared during the same corresponding period of 2013 to 2018, do not show any significant difference or change. Owing to improved infection prevention and control practices in hospitals, the number of hospital-acquired cases of MERS has dropped significantly since 2015.
- The age group 50–59 years continues to be at highest risk for acquiring infection of primary cases. The age group 30–39 years is most at risk for secondary cases. The number of deaths is higher in the age group 50–59 years for primary cases and 70–79 years for secondary cases.

#### MERS cases reported from the Kingdom of Saudi Arabia by week of symptoms onset, June 2012–July 2018

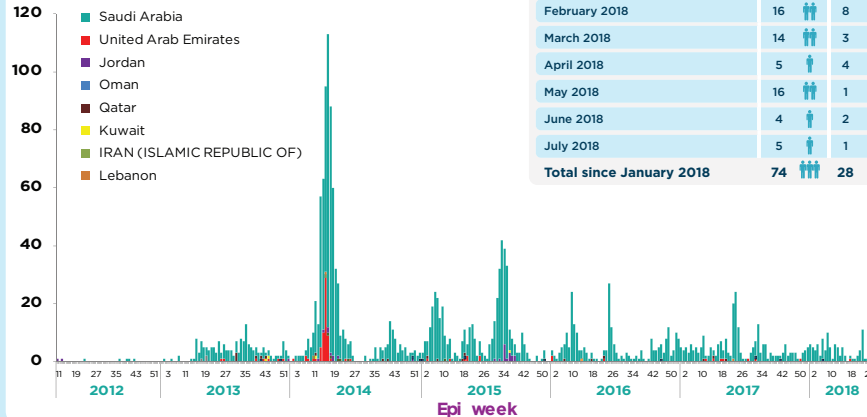


#### Age and fatality distribution of Primary and Secondary cases of MERS reported from Saudi Arabia, 2012–July 2018



### Laboratory-confirmed cases of MERS reported in Eastern Mediterranean Region, April 2012–July 2018

No. of cases



MERS in Saudi Arabia (January–July 2018)

	Survived	Died
January 2018	14	9
February 2018	16	8
March 2018	14	3
April 2018	5	4
May 2018	16	1
June 2018	4	2
July 2018	5	1
<b>Total since January 2018</b>	<b>74</b>	<b>28</b>

### Epidemiological characteristics of MERS cases reported globally between Feb–Jul 2013 and Feb–Jul 2018

Characteristic	Feb–Jul 13	Feb–Jul 14	Feb–Jul 15	Feb–Jul 16	Feb–Jul 17	Feb–Jul 18
Number	85	651	416	158	147	79
Median age in years	51	47	54	53	50	54
Gender (% male)	60	62	67	70	74	84
% of primary cases	25	19	9	28	29	37
% of secondary cases	68	42	28	31	47	30
(%) of unknown contact history	7	32	15	6	3	0
% of HCW	14	29	12	19	24	5
% of Fatal	54	36	32	32	22	24

### Characteristics of MERS cases reported from Kingdom of Saudi Arabia, June 2012–July 2018

Type of case	2012	2013	2014	2015	2016	2017	2018	Grand Total
Primary	3	36	164	52	74	71	33	433
Secondary	2	93	264	222	60	90	26	757
Missing		1	15	102	103	68	41	330
Unknown		28	219	78	11	5		341
<b>Total</b>	<b>5</b>	<b>158</b>	<b>662</b>	<b>454</b>	<b>248</b>	<b>234</b>	<b>100</b>	<b>1861</b>

### SUMMARY

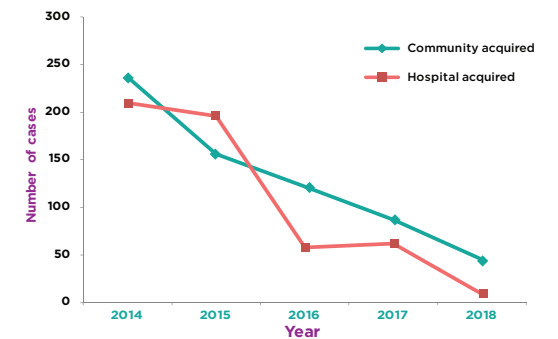
**2237** Laboratory-confirmed Cases Reported Since April 2012

**793** deaths reported since April 2012

**27** countries reported cases globally

**12** countries reported cases since April 2012 in the Eastern Mediterranean Region

#### Community versus hospital acquired (symptomatic) MERS cases in Eastern Mediterranean Region, Jan 2014–July 2018



#### Reported cases of MERS in healthcare workers, January 2013–July 2018

