

HIGHLIGHTS

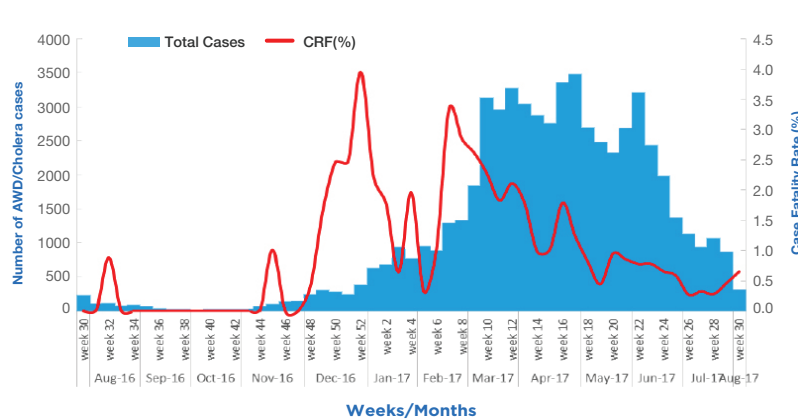
- The cumulative cases of cholera reported from January-July 2017 is 76 236 including 1 157 associated deaths with a case fatality rate of 1.5%.
- Cholera cases and deaths have declined significantly during the month of July 2017 with less districts reporting cases as compared to the previous months; A total of 38 districts reported cases in July as compared to 48 districts in June 2017.
- During the month of July, 6 344 cholera cases including 21 associated deaths (CFR 0.3%) were reported across the country as compared to 14 397 new suspected cholera cases including 101 associated deaths (CFR: 0.6%) in June 2017.
- The overall case fatality rate has declined remarkable as compared to the previous month (from 0.7% to 0.3%).

17 regions reporting suspected cholera cases

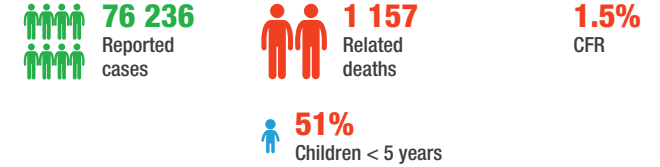
9 out of **17** regions have case-fatality rate (CFR) 1% and above

Region	Cumulative cases	Cumulative deaths	Case Fatality Rate (%)
Bakol	3 975	171	4.3
Banadir	6 477	121	1.9
Bay	14 941	214	1.4
Galgadud	3 954	22	0.6
Gedo	5 603	53	0.9
Hiran	368	3	0.8
Lower Jubba	2 830	15	0.5
Lower Shabelle	5 524	62	1.1
M/Shabelle	2 450	23	0.9
Awdal	1 520	10	0.7
W/Galbeed	595	5	0.8
Sanaag	1 700	28	1.7
Sool	3 605	56	1.6
Togdher	15 633	308	2
Bari	1 702	22	1.3
Mudug	2 620	17	0.7
Nugal	2 739	27	1
Total	76 236	1 157	1.5

CHOLERA CASES IN SOMALIA, AUGUST 2016-JULY 2017



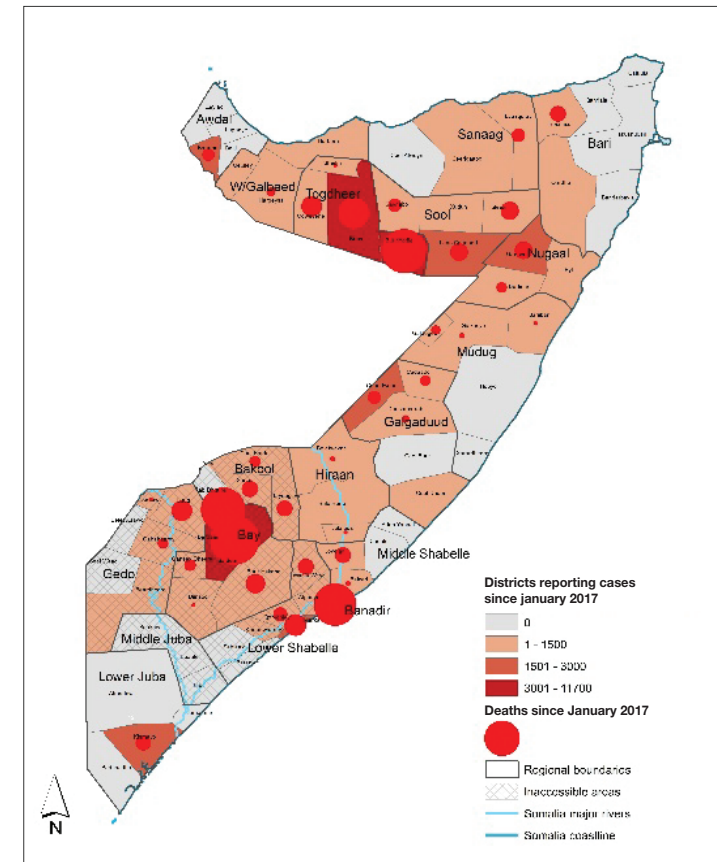
CUMULATIVE KEY FIGURES, JAN-JULY 2017



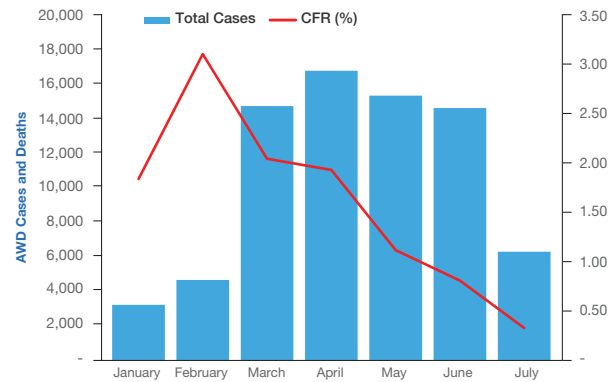
LAST 4 WEEKS KEY FIGURES, JULY 2017



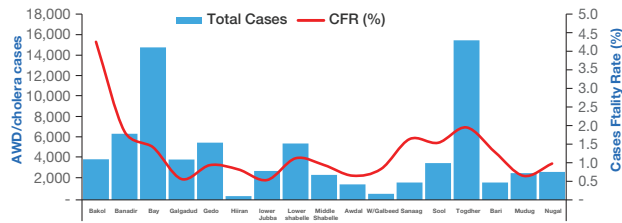
DISTRIBUTION OF CHOLERA CASES IN SOMALIA, JAN-JULY 2017



DISTRIBUTION OF CHOLERA CASES AND CFR BY MONTH, JANUARY-JULY 2017



CHOLERA CASES AND CASE FATALITY RATES BY REGION IN SOMALIA: AS OF JULY 30 2017



COMPARISON OF CASE-FATALITY RATES BASED ON ACCESSIBILITY, WEEKS 1-30, 2017

