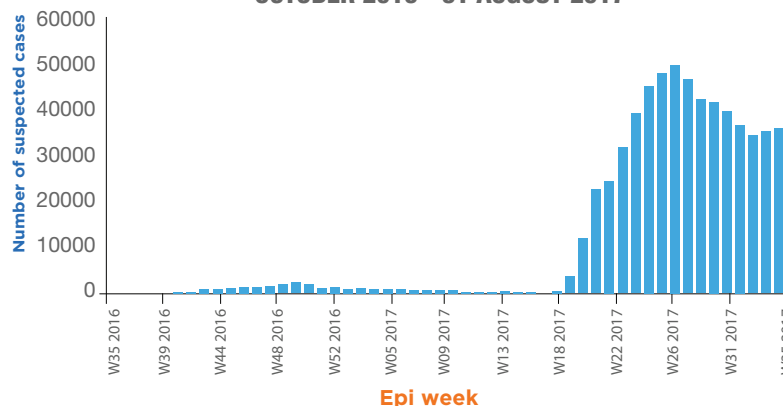


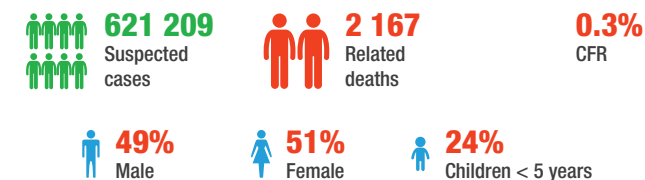
### HIGHLIGHTS

- During the month of August 2017, the Ministry of Public Health and Population of Yemen reported a total 152 216 cholera cases including 117 associated deaths (CFR-0.1%).
- The cumulative number of cholera cases reported in Yemen since October 2016 is 621 209 including 2 167 related deaths with a case fatality rate of 0.35%. The country experienced a second wave of this outbreak during the month of April and from 27 April to 31 August 2017, the total number of reported cases of cholera is 595 382 including 2 038 related deaths with a case fatality rate of 0.34%.
- A peak of cholera suspected cases was observed during the epidemiological week 26, subsequently the weekly number of cases has decreased from then until epidemiological week 32. For the first time during the last 6 weeks, the weekly number of cases increased slightly from epi week 32 to epi week 33.
- In total, 22 out of 23 (96%) governorates and 300 out of 333 districts (90%) are affected by the Cholera outbreak. The five governorates with the highest cumulative attack rates per 10,000 are Amran (513), Al Mahwit (476), Al Dhale'e (462), Abyan (366) and Hajjah (268).

### EPIDEMIC CURVE OF CHOLERA CASES IN YEMEN, OCTOBER 2016 - 31 AUGUST 2017



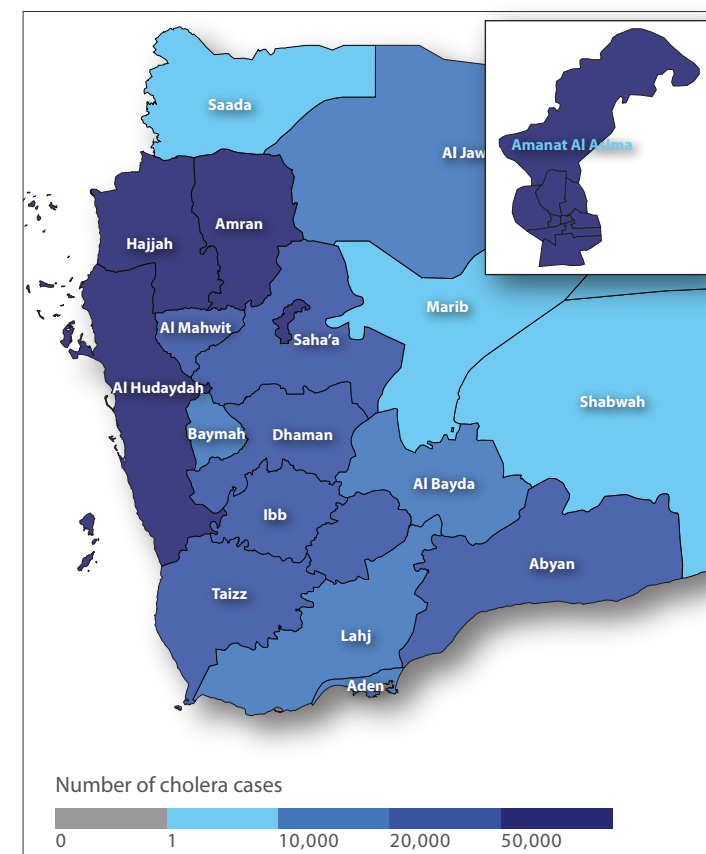
### CUMULATIVE KEY FIGURES, OCT 2016 - AUG 2017



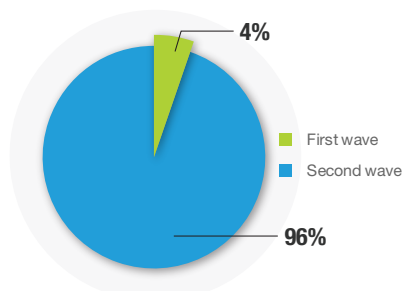
### LAST 4 WEEKS KEY FIGURES, AUGUST 2017



### DISTRIBUTION OF SUSPECTED CHOLERA CASES IN YEMEN, JANUARY - AUGUST 2017



### CHOLERA CASES REPORTED IN YEMEN BY EPIDEMIC WAVE, OCTOBER 2016 - AUGUST 2017 (n= 621 209)



### CHOLERA CASES AND DEATHS REPORTED DURING THE SECOND WAVE, 27 APRIL 2017- 31 AUGUST 2017

Governorate	Cases	Deaths	CFR (%)
Amran	60,986	159	0.26
Al Mahwit	35,964	136	0.38
Al Dhale'e	34,616	78	0.23
Abyan	21,328	35	0.16
Hajjah	64,832	383	0.59
Dhamar	51,556	145	0.28
Al Bayda	18,070	27	0.15
Amanat Al Asimah	66,523	64	0.10
Al Hudaydah	74,102	239	0.32
Sana'a	31,204	122	0.39
Aden	15,883	59	0.37
<b>Raymah</b>	<b>10,239</b>	<b>106</b>	<b>1.04</b>
Lahj	14,731	20	0.14
Ibb	41,932	257	0.61
Al Jawf	7,713	18	0.23
Taizz	37,214	175	0.47
Marib	3,620	7	0.19
Al Maharrah	1,119	1	0.09
Sa'ada	2,802	5	0.18
Shabwah	727	1	0.14
Mokilla	211	1	0.47
Say'on	10	0	-
<b>Total</b>	<b>595,382</b>	<b>2,038</b>	<b>0.34</b>

### SUSPECTED CHOLERA CASES AND CASE-FATALITY RATES BY GOVERNORATE IN YEMEN, 27 APRIL-31 AUGUST 2017 (SECOND WAVE)

