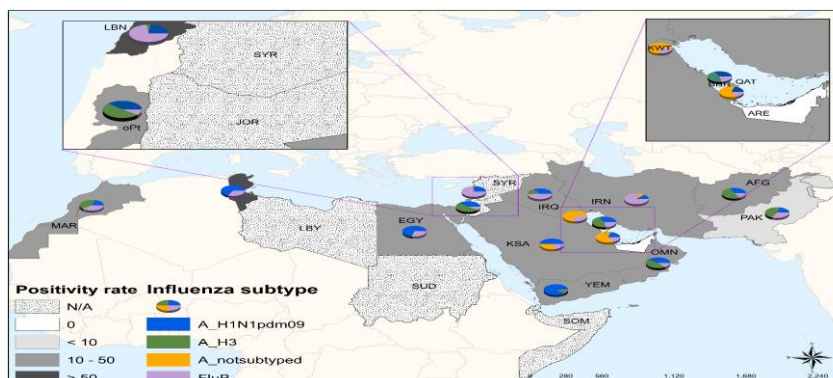


# Influenza monthly update

In January 2020, many countries reported data to FluNet and EMFLU, namely Afghanistan, Bahrain, Egypt, Iran (Islamic Republic of), Iraq, Jordan, Kuwait, Lebanon, Morocco, occupied Palestinian territory (oPt), Oman, Pakistan, Qatar, Saudi Arabia, Sudan, Syrian Arab Republic, Tunisia, United Arab Emirates and Yemen.

The proportion of tested cases for influenza in the Region was 92% out of 16 104 enrolled cases; 28.6% of cases tested positive and 71.4% tested negative.



Disclaimer: The representation of material on the maps contained herein does not imply the expression of any opinion whatsoever on the part of the World Health Organization concerning the legal status of any country, territory, city or area or its authority of frontiers or boundaries. Dotted lines on maps represents approximate border lines for which there may not be full agreement.

Figure 1. Influenza geographic spread during January 2020

## Influenza activity by sub-type

In northern Africa, influenza activity continued to decrease in Egypt, Morocco and Tunisia with influenza A(H1N1)pdm09 and Influenza B most frequently detected.

In western Asia, influenza activity remained elevated in Iraq and Qatar, with influenza A(H1N1)pdm09 and B viruses co-circulating. In Kuwait, Oman and Saudi Arabia, influenza activity continued to decrease with detections of both influenza A and B viruses. In Lebanon and oPt, influenza detections of predominately B viruses and predominately A viruses appeared to decrease at the end of the month respectively.

In southern Asia, influenza activity remained elevated in with influenza B most frequently detected in the Islamic Republic of Iran. In Afghanistan and Pakistan, influenza activity continued to decrease with influenza A and B viruses co-circulating.

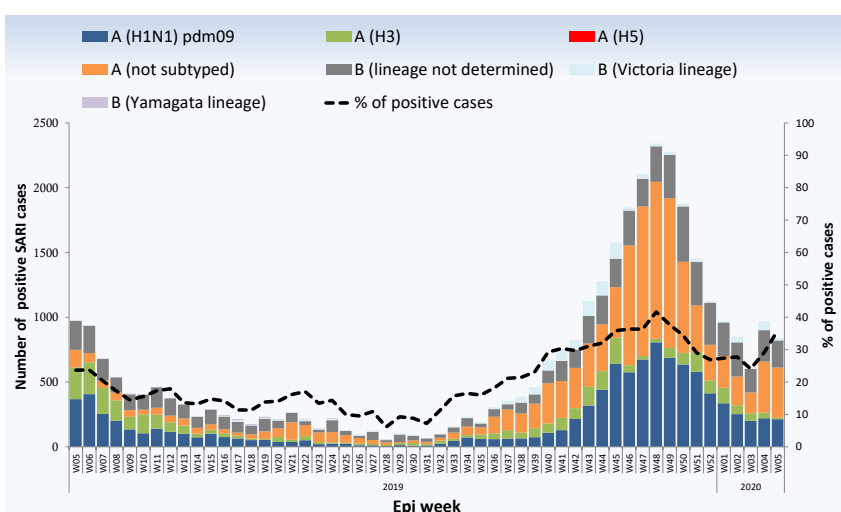


Figure 2. Weekly positive cases of influenza by subtype, weeks 05/2019–2020

## Circulating influenza viruses by sub-type

During January 2020, national influenza centres and influenza laboratories in the Region tested a total of 14 817 specimens for influenza viruses, of which 4242 tested positive (28.6%).

The average percentage of positive rates was 28.6%, with the highest positive rates recorded in Lebanon and Saudi Arabia.

Of the viruses tested, 2933 (69%) were influenza A viruses, including 1224 (29%) influenza A(H1N1)pdm09 viruses, 298 (7%) were influenza A(H3) viruses and 1411 (33%) were influenza A(not subtyped) viruses. Influenza B viruses (lineage not determined) accounted for 1156 (27%).

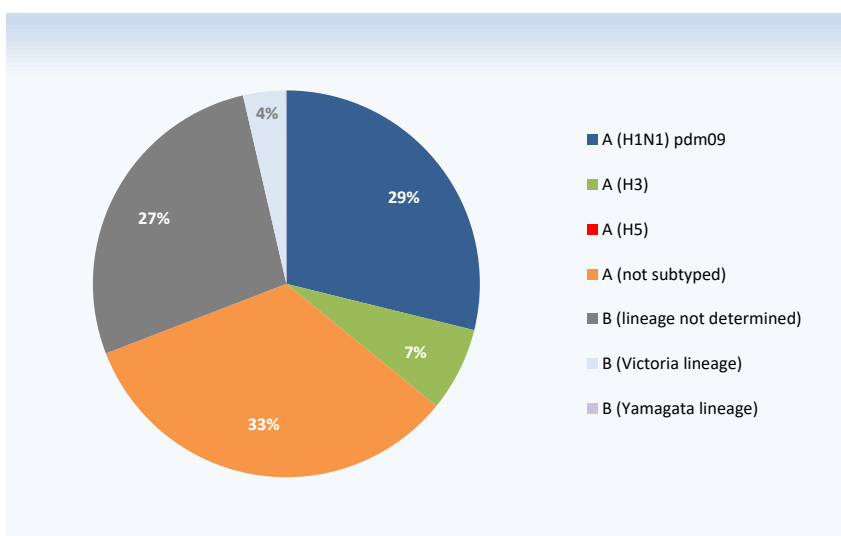


Figure 3. Circulating influenza viruses by sub-type during January 2020

Source of data: FluNet and EMFLU

© World Health Organization 2020.

Some rights reserved. This work is available under the Creative Commons Attribution-Non Commercial-Share Alike 3.0 IGO license (CC BY-NC-SA 3.0 IGO); <https://creativecommons.org/licenses/by-nc-sa/3.0/igo>.